

# FINDING A PRIMARY CARE PROVIDER IN NOVA SCOTIA

June 2019 Report

Prepared for: Public



Reporting Cycle: Monthly

# INTRODUCTION

## Background

Nova Scotia Health Authority’s Need a Family Practice (NAFP) registry was launched on November 1, 2016. The registry provides a coordinated and consistent provincial approach for tracking Nova Scotians who self identify as not having access to a primary care provider (family physician or nurse practitioner).

People can register themselves and their family members on the NAFP registry online or by telephone to be contacted by a participating practice/provider that is accepting new patients. There are two main ways that contribute to how we report the number of people who have found a primary care provider in Nova Scotia: (1) Through names that are on the NAFP Registry and; (2) names that are not on the NAFP Registry and are sent to NSHA through other routes.

 <b>1. NSHA’s Need a Family Practice Registry</b>	 <b>2. Other Routes</b>
People can register themselves and their family members on the Need a Family Practice (NAFP) Registry online or by telephone to be contacted by a participating practice/provider that is accepting new patients.	People can find a primary care provider in other ways, such as with local family practices, through a family member who is an existing patient of a practice, or through a referral by another provider. Information on the number of patients accepted by family doctors who received the patient attachment incentive since April 2018 is also included in the ‘Other Routes’ category.

The term **‘Found a Provider’** is used throughout the report to depict the approximate number of people in Nova Scotia who have found a primary care provider and were registered on the NAFP registry and through other routes as tracked by NSHA since November 2016. The term **'Not Yet Placed'** is used to depict the number of NAFP registrants who are seeking a primary care provider and have added their names to the NAFP registry.

The report highlights the overall volume of people who have found a provider and who are not yet placed by geography (zone, network, and cluster), as well as by month, with data as of **May 25, 2019**.

## Report Format

This report is divided into the following sections:

1. Total Provincial Volumes
2. Monthly Activity
3. Total Zonal Volumes – Found a Provider
4. Total Zonal Volumes – Not Yet Placed

# 1 | TOTAL PROVINCIAL VOLUMES



## Total Provincial Volumes – Found a Primary Care Provider

- Over the month of May, 6,013 people found a primary care provider.
- The overall number of people in Nova Scotia who have found a primary care provider (NAFP registry and other routes) as tracked by NSHA since November 2016 is 92,285.



## Total Provincial Volumes – Not Yet Placed

- As of the June 1, 2019 report, there were 52,253 registrants not yet placed with a family practice, which accounts for 5.7% of the total population in Nova Scotia (based on 2011 census data).
- This represents a 0.6% decrease from the May 1, 2019 report where 52,585 registrants were not yet placed.

Figure 1 identifies the number of people in Nova Scotia who have found a primary care provider who were on the NAFP registry or identified through other routes as tracked by NSHA since November 2016.

**Figure 1: Total Provincial Volumes - Found a Primary Care Provider by Month**

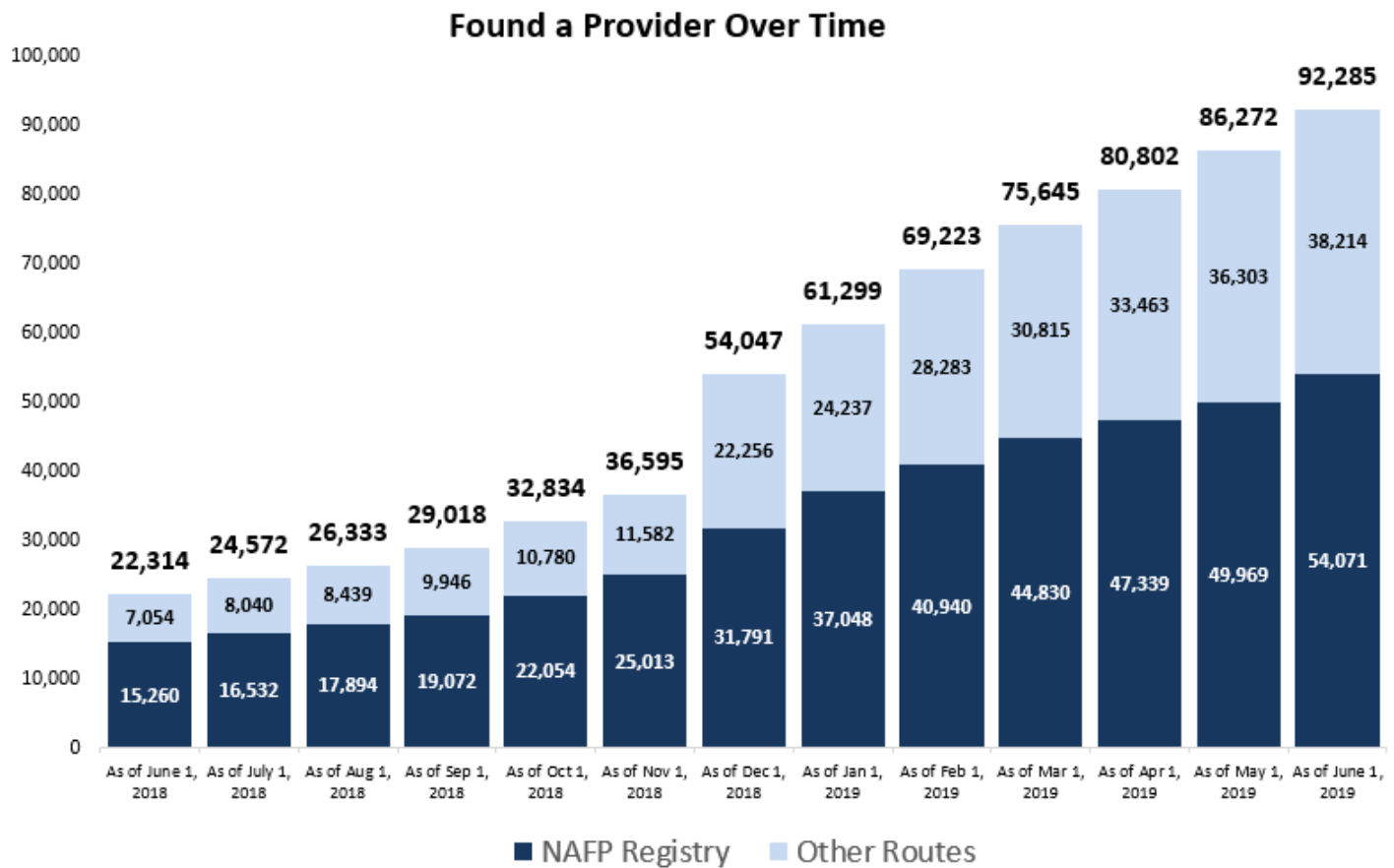
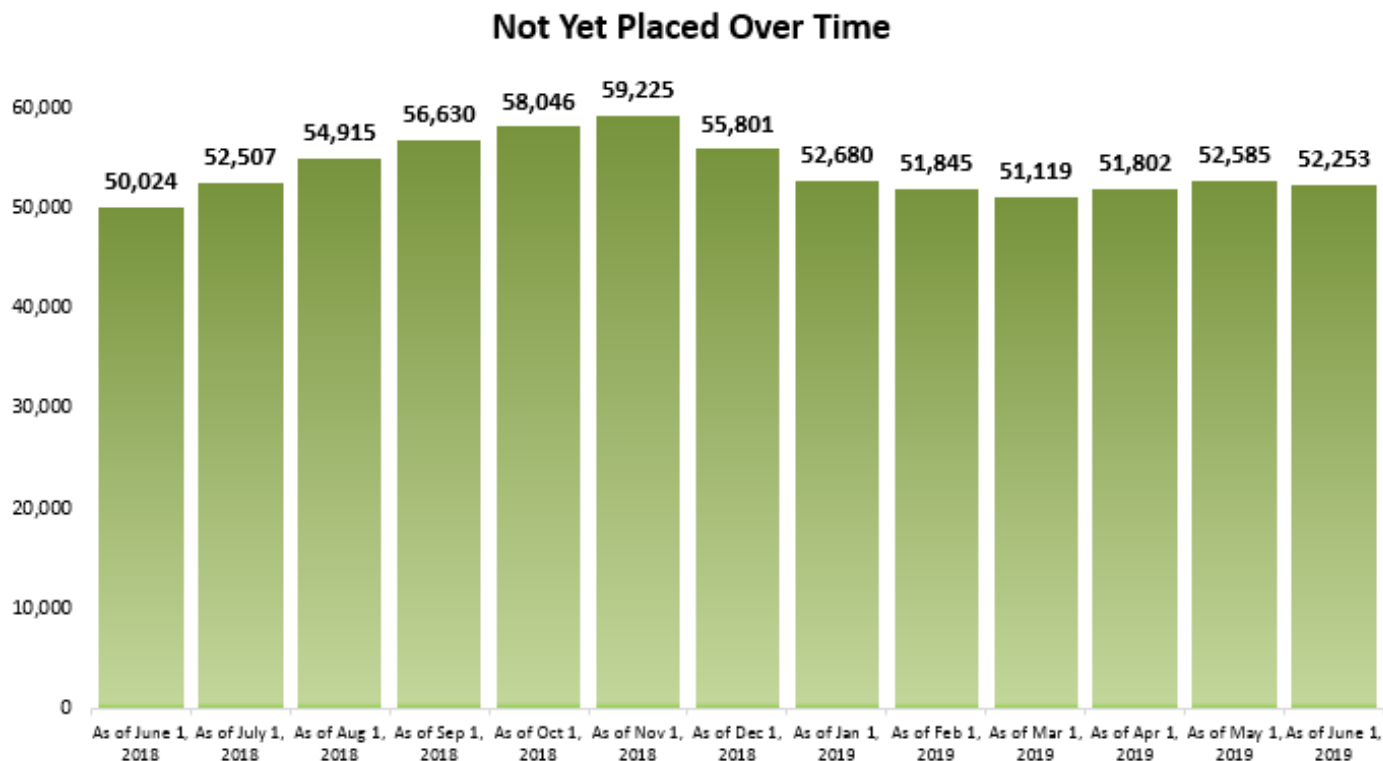


Figure 2 depicts the total number of registrants, by month, on the Need a Family Practice registry that are not yet placed with a family practice.

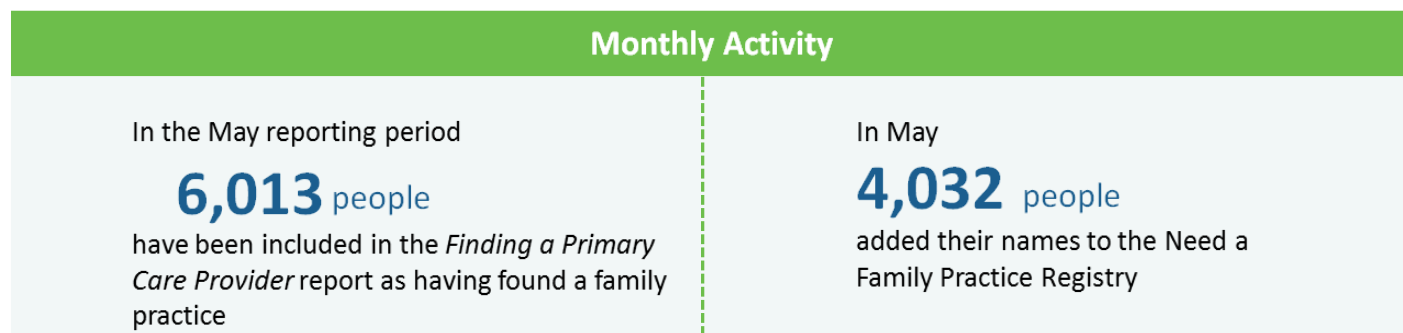
**Figure 2: Total Provincial Volumes - Not Yet Placed by Month**



## 2 | MONTHLY ACTIVITY

During the month of May, 6,013 people found a family doctor or nurse practitioner, and 4,032 people added their names to the Need a Family Practice registry as of June 1. Figure 3 highlights the overall monthly activity during the month of May 2019.


**Figure 3: Provincial Volumes - Monthly Activity**



## Monthly Activity by Zone

Figure 4 provides a summary of the monthly activity that occurred between the May 1 report and the June 1 report.

**Figure 4: Total Zonal Monthly Activity**



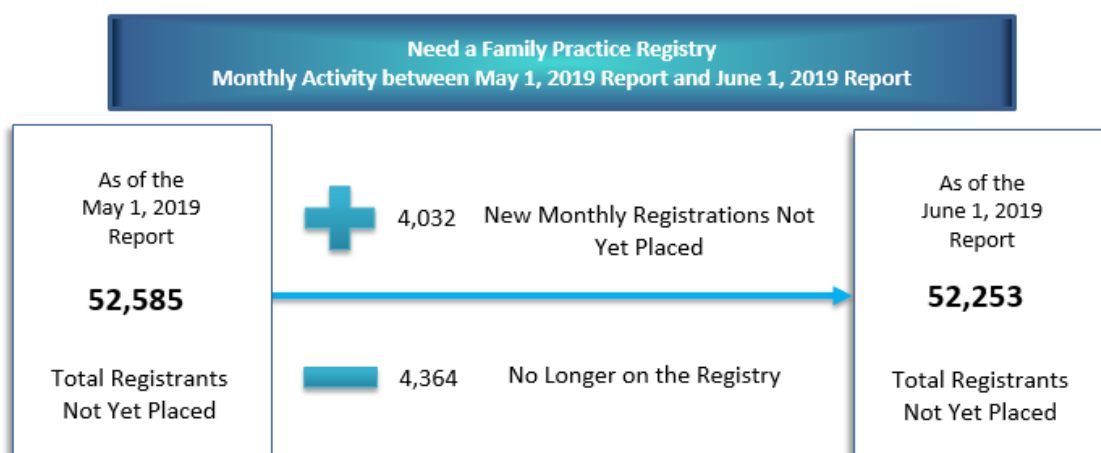
Zone	Geography	Monthly Activity			Population Percentages	
		May 1, 2019	Jun 1, 2019	% Change	May 1, 2019	Jun 1, 2019
Central Zone	Bedford /Sackville, Dartmouth / Southeastern, Eastern Shore Musquodoboit, Halifax Peninsula / Chebucto, and West Hants	19,754	18,186	-7.9%	4.4%	45,425
Eastern Zone	Antigonish and Guysborough, Cape Breton County, and Inverness / Victoria / Richmond	4,108	4,069	-0.9%	2.5%	17,861
Northern Zone	Colchester, Cumberland, and Pictou County	10,057	10,781	7.2%	7.2%	12,126
Western Zone	Annapolis and Kings, Queens and Lunenburg and Yarmouth / Shelburne / Digby	18,647	19,213	3.0%	9.8%	16,710
Unknown Geography	Unknown Geography	19	4	-	-	163
<b>NOVA SCOTIA</b>	<b>TOTAL ACROSS NOVA SCOTIA</b>	<b>52,585</b>	<b>52,253</b>	<b>-0.6%</b>	<b>5.7%</b>	<b>92,285</b>

\*Not yet placed percent of the population relative to the geography's population (i.e., zone)

## Monthly Registry Activity

Specific to the NAFP registry during the month of May, 4,032 new registrations occurred (people who need a family practice) and 4,364 registrants were removed from the registry. People are removed from the registry because they were assisted with finding a family practice or for other reasons, such as already having found a provider when contacted by NSHA or having a duplicate registration. Figure 5 highlights the overall activity in the NAFP registry during the month of May 2019.

**Figure 5: Monthly NAFP Registry Activity**

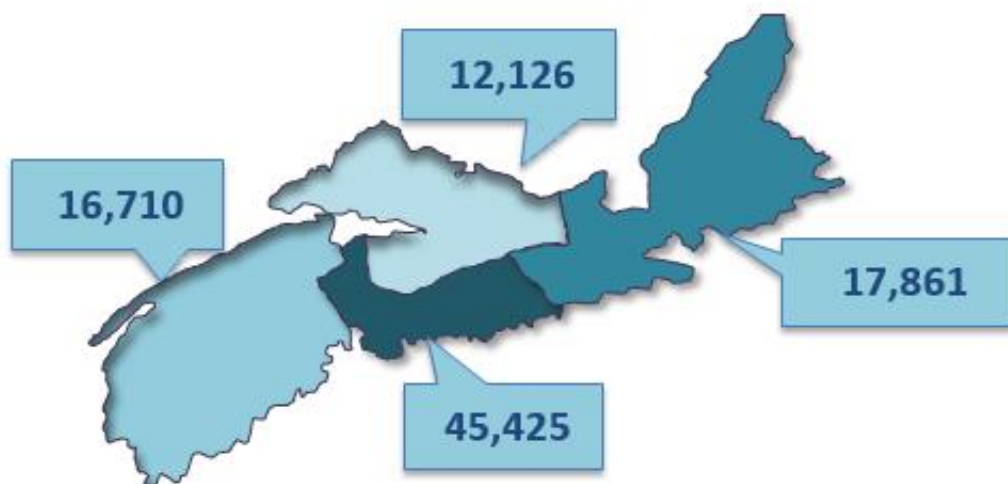


The registry is dynamic, with registrants being added and removed each day. Figure 5 is a simplified graphic that compares two snapshots, one month apart. It depicts the change in the registry total, showing the number of those who have newly registered in the past month, minus the number of people who were no longer on the registry, which is a total of the number of registrants who found a provider and those who have been removed from the registry for other reasons.

### 3 | TOTAL ZONAL VOLUMES: FOUND A PRIMARY CARE PROVIDER

As of June 1, 92,285 Nova Scotians have found a primary care provider who were registered on the NAFP registry or identified through other routes as tracked by NSHA, since November 2016. Figure 6 depicts the breakdown of individuals, by zone, that have found a provider.

**Figure 6:** Total Zonal Volumes - Found a Primary Care Provider



\*Note: 163 have an unknown zone

Table 1 provides the geographic breakdown of the number of people by zone, network, and cluster that found a primary care provider as reported through the NAFP registry or other routes tracked by NSHA, since November 2016.

**Table 1:** Total Zone, Network, and Cluster Volumes - Found a Primary Care Provider – June 1, 2019 Report

Total Zone, Network, and Cluster Volumes - Found a Primary Care Provider – June 1, 2019 Report	
Zone/Network/Cluster	Total # Found a Provider
<b>Central</b>	<b>45,425</b>
<b>Bedford / Sackville</b>	<b>6,880</b>
Bedford / Hammonds Plains	3,194
Fall River / Waverley	808
Sackville North / Beaverbank / Mount Uniacke	1,487
Sackville South	1,391
<b>Dartmouth / Southeastern</b>	<b>13,305</b>
Cole Harbour / Eastern Passage	3,246

<b>Total Zone, Network, and Cluster Volumes - Found a Primary Care Provider – June 1, 2019 Report</b>	
<b>Zone/Network/Cluster</b>	<b>Total # Found a Provider</b>
Dartmouth East	3,816
Dartmouth North	2,424
Dartmouth South	2,886
Preston / Lawrencetown / Lake Echo	933
<b>Eastern Shore Musquodoboit</b>	<b>2,325</b>
Eastern Shore Musquodoboit	2,325
<b>Halifax Peninsula / Chebucto</b>	<b>16,589</b>
Armdale / Spryfield / Herring Cove	2,399
Clayton Park	3,654
Fairview	1,944
Halifax Chebucto	1,830
Halifax Citadel	1,829
Halifax Needham	2,029
Sambro Loop Area	856
Tantallon / Timberlea / St.Margaret's Bay	2,048
<b>West Hants</b>	<b>6,326</b>
West Hants	6,326
<b>Eastern</b>	<b>17,861</b>
<b>Antigonish and Guysborough</b>	<b>663</b>
Antigonish	525
Guysborough / Canso	100
Sherbrooke	38
<b>Cape Breton County</b>	<b>12,703</b>
Dominion / Glace Bay	2,333
Florence / Sydney Mines / North Sydney	2,443
New Waterford	1,678
Sydney	6,249
<b>Inverness / Victoria / Richmond</b>	<b>4,495</b>
Baddeck / Whycomomagh	1,934
Cheticamp	573
Dingwall	33
Inverness	287
Port Hawkesbury / Isle Madame / L'Ardoise	1,668
<b>Northern</b>	<b>12,126</b>
<b>Colchester East Hants</b>	<b>6,410</b>
East Hants Corridor	310
Economy / Glenholme	107
Hants North	436
South Colchester	299
Truro and Area	5,258
<b>Cumberland</b>	<b>1,783</b>
Amherst	290
North Cumberland / North Shore	673

<b>Total Zone, Network, and Cluster Volumes - Found a Primary Care Provider – June 1, 2019 Report</b>	
<b>Zone/Network/Cluster</b>	<b>Total # Found a Provider</b>
South Cumberland	196
Springhill	624
<b>Pictou County</b>	<b>3,933</b>
New Glasgow / Westville / Stellarton	2,317
Pictou West	1,616
<b>Western</b>	<b>16,710</b>
<b>Annapolis and Kings</b>	<b>7,135</b>
Annapolis Royal	189
Berwick	758
Kentville	2,963
Middleton	2,147
Wolfville	1,078
<b>Queens and Lunenburg</b>	<b>5,361</b>
Bridgewater	1,904
Chester	1,327
Liverpool	1,522
Lunenburg / Mahone Bay	608
<b>Yarmouth / Shelburne / Digby</b>	<b>4,214</b>
Digby / Clare / Weymouth	1,338
Shelburne / Lockeport	1,147
Yarmouth	1,729
<b>Unknown</b>	<b>163</b>
<b>Total Found a Provider</b>	<b>92,285</b>



## 4 | TOTAL ZONAL VOLUMES – NOT YET PLACED

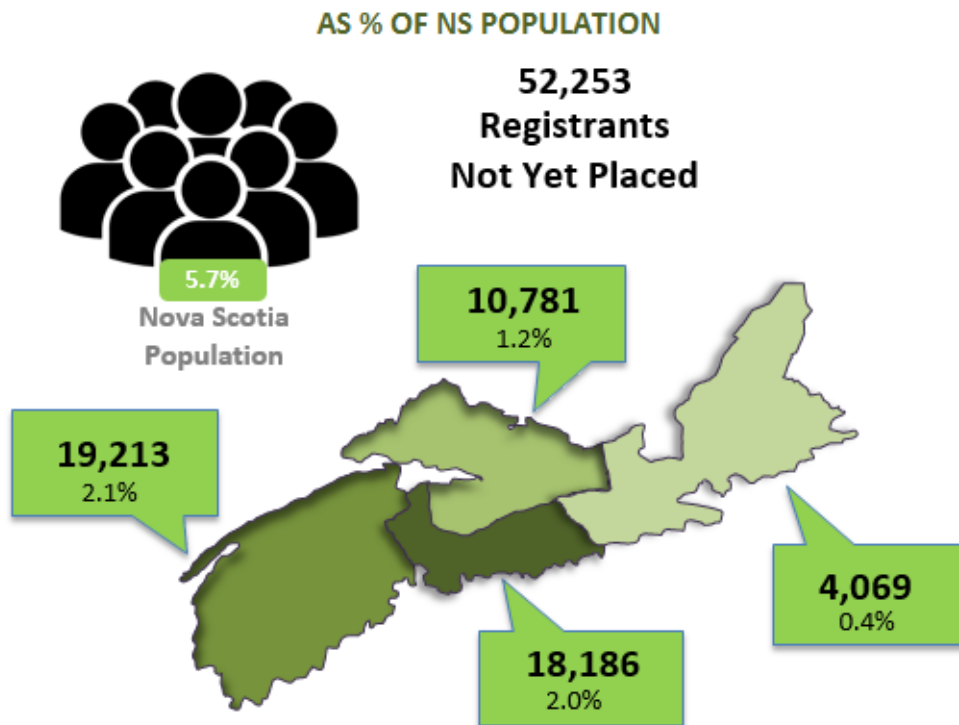
There are 52,253 registrants not yet placed with a family practice as of the June 1 report. The total volumes by zone\* are:

- Central Zone: 18,186 registrations
- Eastern Zone: 4,069 registrations
- Northern Zone: 10,781 registrations
- Western Zone: 19,213 registrations

\*Note: 4 have an unknown zone

Figure 7 gives a high-level overview of the volume of NAFP registrants who are not yet placed, by zone, as a percent of the total Nova Scotia population based on 2011 census counts.

**Figure 7: Total Zonal Volumes - Not Yet Placed as a Percent of the Total Nova Scotia Population**



\*Note: 4 have an unknown zone

Table 2 gives a detailed geographical breakdown of the volume of registrants not yet placed by zone, network, and cluster and as a percent of the corresponding Nova Scotia population by zone, network, and cluster.

**Table 2: Total Volumes Not Yet Placed by Zone, Network, and Cluster and as Percent of Population by Zone, Network, and Cluster**

Total Zone, Network, and Cluster Volumes – Not Yet Placed – June 1, 2019 Report			
Zone/Network/Cluster	Total # Not Yet Placed	Population by Zone, Network, Cluster (2011)	% of Population by Zone, Network, Cluster (2011)
Central	18,186	409,706	4.4%
Bedford / Sackville	3,279	87,838	3.7%

Total Zone, Network, and Cluster Volumes – Not Yet Placed – June 1, 2019 Report			
Zone/Network/Cluster	Total # Not Yet Placed	Population by Zone, Network, Cluster (2011)	% of Population by Zone, Network, Cluster (2011)
Bedford / Hammonds Plains	1,396	30,109	4.6%
Fall River / Waverley	392	13,994	2.8%
Sackville North / Beaverbank / Mount Uniacke	832	22,356	3.7%
Sackville South	659	21,379	3.1%
<b>Dartmouth / Southeastern</b>	<b>5,175</b>	<b>115,427</b>	<b>4.5%</b>
Cole Harbour / Eastern Passage	1,505	36,902	4.1%
Dartmouth East	914	23,616	3.9%
Dartmouth North	1,085	19,238	5.6%
Dartmouth South	1,319	24,719	5.3%
Preston / Lawrencetown / Lake Echo	352	10,952	3.2%
<b>Eastern Shore Musquodoboit</b>	<b>484</b>	<b>18,165</b>	<b>2.7%</b>
Eastern Shore Musquodoboit	484	18,165	2.7%
<b>Halifax Peninsula / Chebucto</b>	<b>8,597</b>	<b>167,379</b>	<b>5.1%</b>
Armdale / Spryfield / Herring Cove	1,029	23,502	4.4%
Clayton Park	2,392	34,439	6.9%
Fairview	826	15,789	5.2%
Halifax Chebucto	1,017	18,764	5.4%
Halifax Citadel	1,340	20,055	6.7%
Halifax Needham	1,173	20,192	5.8%
Sambro Loop Area	402	13,408	3.0%
Tantallon / Timberlea / St.Margaret's Bay	418	21,230	2.0%
<b>West Hants</b>	<b>651</b>	<b>20,897</b>	<b>3.1%</b>
West Hants	651	20,897	3.1%
<b>Eastern</b>	<b>4,069</b>	<b>163,450</b>	<b>2.5%</b>
<b>Antigonish and Guysborough</b>	<b>322</b>	<b>27,548</b>	<b>1.2%</b>
Antigonish	284	19,583	1.5%
Guysborough / Canso	30	5,122	0.6%
Sherbrooke	8	2,843	0.3%
<b>Cape Breton County</b>	<b>3,332</b>	<b>102,397</b>	<b>3.3%</b>
Dominion / Glace Bay	715	21,782	3.3%
Florence / Sydney Mines / North Sydney	550	19,870	2.8%
New Waterford	621	9,757	6.4%
Sydney	1,446	50,988	2.8%
<b>Inverness / Victoria / Richmond</b>	<b>415</b>	<b>33,505</b>	<b>1.2%</b>
Baddeck / Whycocomagh	11	5,382	0.2%
Cheticamp	<5	4,688	0.1%
Inverness	6	4,667	0.1%

Total Zone, Network, and Cluster Volumes – Not Yet Placed – June 1, 2019 Report			
Zone/Network/Cluster	Total # Not Yet Placed	Population by Zone, Network, Cluster (2011)	% of Population by Zone, Network, Cluster (2011)
Port Hawkesbury / Isle Madame / L'Ardoise	395	16,035	2.5%
Dingwall	0	2,733	0.0%
<b>Northern</b>	<b>10,781</b>	<b>150,409</b>	<b>7.2%</b>
<b>Colchester East Hants</b>	<b>5,743</b>	<b>69,991</b>	<b>8.2%</b>
East Hants Corridor	740	12,860	5.8%
Economy / Glenholme	220	5,078	4.3%
Hants North	517	6,613	7.8%
South Colchester	295	10,001	2.9%
Truro and Area	3,971	35,439	11.2%
<b>Cumberland</b>	<b>1,221</b>	<b>34,750</b>	<b>3.5%</b>
Amherst	379	14,819	2.6%
North Cumberland / North Shore	610	8,395	7.3%
South Cumberland	97	4,311	2.3%
Springhill	135	7,225	1.9%
<b>Pictou County</b>	<b>3,817</b>	<b>45,668</b>	<b>8.4%</b>
New Glasgow / Westville / Stellarton	3,128	34,916	9.0%
Pictou West	689	10,752	6.4%
<b>Western</b>	<b>19,213</b>	<b>196,284</b>	<b>9.8%</b>
<b>Annapolis and Kings</b>	<b>9,247</b>	<b>78,507</b>	<b>11.8%</b>
Annapolis Royal	941	6,026	15.6%
Berwick	2,236	13,161	17.0%
Kentville	1,491	24,944	6.0%
Middleton	4,149	21,022	19.7%
Wolfville	430	13,354	3.2%
<b>Queens and Lunenburg</b>	<b>5,355</b>	<b>59,384</b>	<b>9.0%</b>
Bridgewater	2,631	28,417	9.3%
Chester	901	12,271	7.3%
Liverpool	937	10,908	8.6%
Lunenburg / Mahone Bay	886	7,788	11.4%
<b>Yarmouth / Shelburne / Digby</b>	<b>4,611</b>	<b>58,393</b>	<b>7.9%</b>
Digby / Clare / Weymouth	2,372	18,899	12.6%
Shelburne / Lockeport	626	14,506	4.3%
Yarmouth	1,613	24,988	6.5%
<b>Unknown</b>	<b>4</b>	<b>-</b>	<b>0.0%</b>
<b>Total # Not Yet Placed</b>	<b>52,253</b>	<b>919,849</b>	<b>5.7%</b>