

FINDING A PRIMARY CARE PROVIDER IN NOVA SCOTIA

January 2019 Report

Prepared for: Public



Reporting Cycle: Monthly

INTRODUCTION

Background

Nova Scotia Health Authority’s Need a Family Practice (NAFP) registry was launched on November 1, 2016. The registry provides a coordinated and consistent provincial approach for tracking Nova Scotians who self identify as not having access to a primary care provider (family physician or nurse practitioner).

People can register themselves and their family members on the NAFP registry online or by telephone to be contacted by a participating practice/provider that is accepting new patients. There are two main ways that contribute to how we report the number of people who have found a primary care provider in Nova Scotia: (1) Through names that are on the NAFP Registry and; (2) names that are not on the NAFP Registry and are sent to NSHA through other routes.

 1. NSHA’s Need a Family Practice Registry	 2. Other Routes
People can register themselves and their family members on the Need a Family Practice (NAFP) Registry online or by telephone to be contacted by a participating practice/provider that is accepting new patients.	People can find a primary care provider in other ways, such as with local family practices, through a family member who is an existing patient of a practice, or through a referral by another provider. Information on the number of patients accepted by family doctors who received the patient attachment incentive since April 2018 is also included in the ‘Other Routes’ category.

The term **‘Found a Provider’** is used throughout the report to depict the approximate number of people in Nova Scotia who have found a primary care provider and were registered on the NAFP registry and through other routes as tracked by NSHA since November 2016. The term **‘Not Yet Placed’** is used to depict the number of NAFP registrants who are seeking a primary care provider and have added their names to the NAFP registry.

The report highlights the overall volume of people who have found a provider and who are not yet placed by geography (zone, network, and cluster), as well as by month, with data as of **December 25, 2018**.

Report Format

This report is divided into the following sections:

1. Total Provincial Volumes
2. Monthly Activity
3. Total Zonal Volumes – Found a Provider
4. Total Zonal Volumes – Not Yet Placed

1 | TOTAL PROVINCIAL VOLUMES



Total Provincial Volumes – Found a Primary Care Provider

- Over the month of December, 7,252 people found a primary care provider.
- The overall number of people in Nova Scotia who have found a primary care provider (NAFP registry and other routes) as tracked by NSHA since November 2016 is 61,299.



Total Provincial Volumes – Not Yet Placed

- As of the January 1, 2019 report, there were 52,680 registrants not yet placed with a family practice, which accounts for 5.7% of the total population in Nova Scotia (based on 2011 census data).
- This represents a 5.6% decrease from the December 1, 2018 report where 55,801 registrants were not yet placed.

Figure 1 identifies the number of people in Nova Scotia who have found a primary care provider who were on the NAFP registry or identified through other routes as tracked by NSHA since November 2016.

Figure 1: Total Provincial Volumes - Found a Primary Care Provider by Month

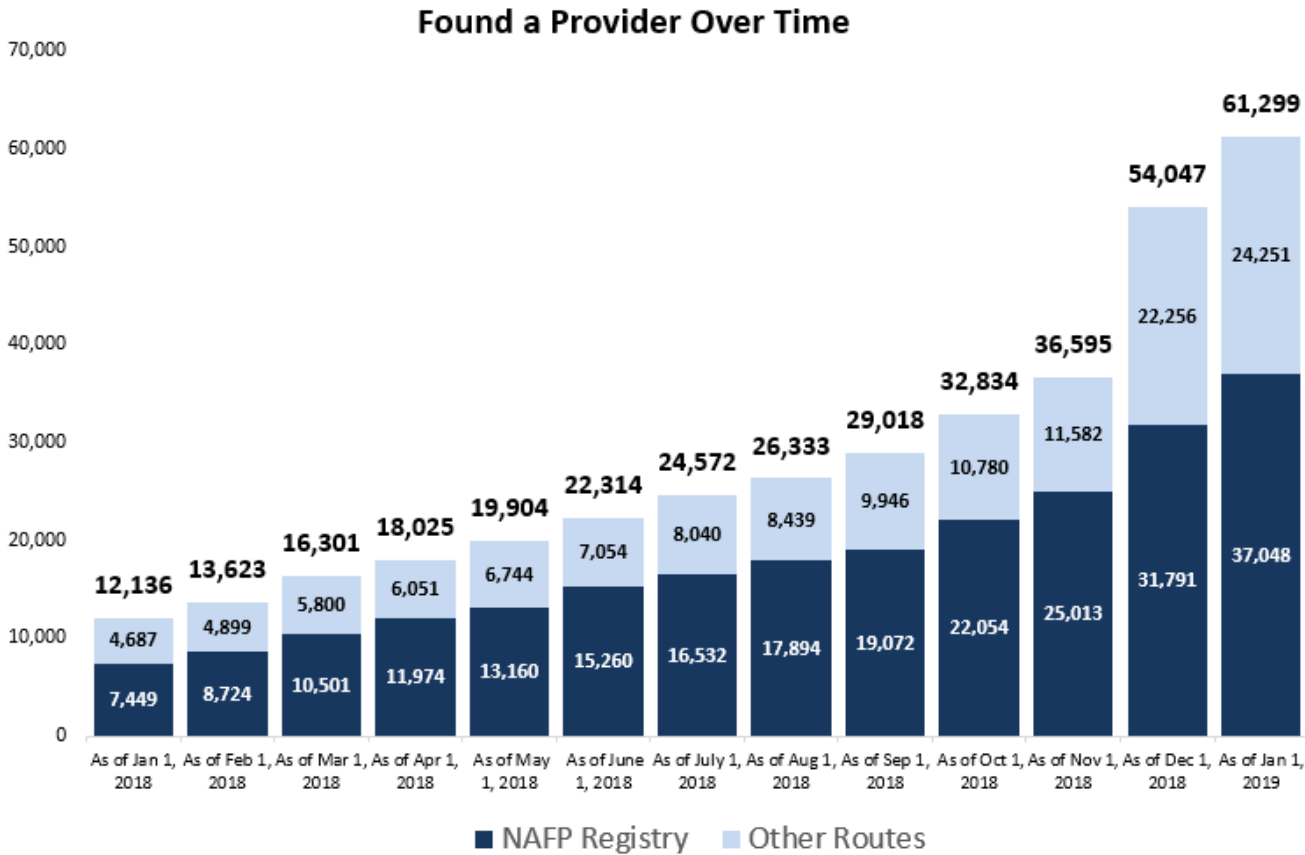
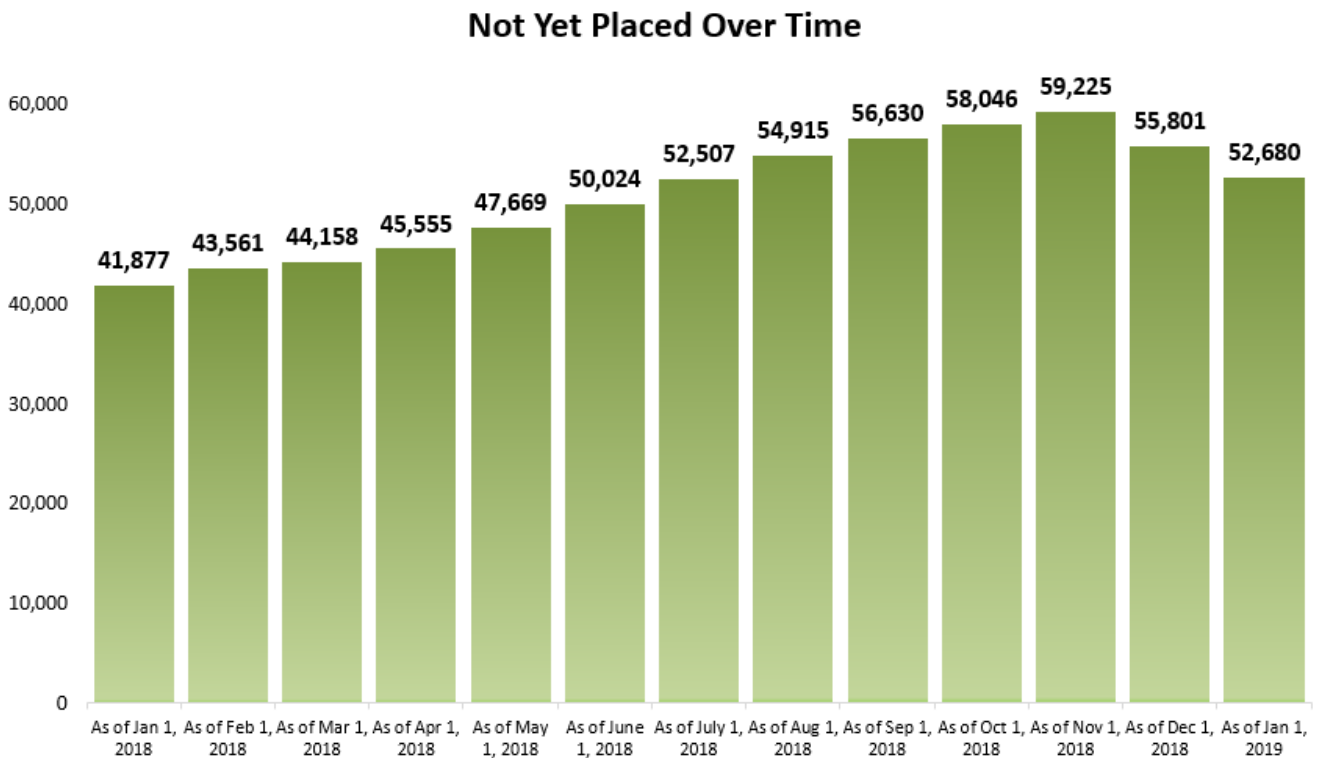


Figure 2 depicts the total number of registrants, by month, on the Need a Family Practice registry that are not yet placed with a family practice.

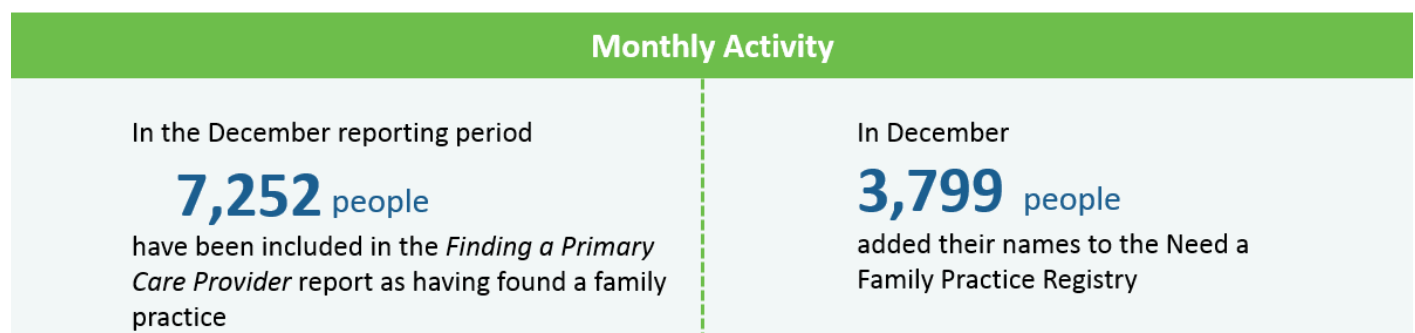
Figure 2: Total Provincial Volumes - Not Yet Placed by Month



2 | MONTHLY ACTIVITY

During the month of December, 7,252 people found a family doctor or nurse practitioner, and 3,799 people added their names to the Need a Family Practice registry as of January 1. Figure 3 highlights the overall monthly activity during the month of December 2018.


Figure 3: Provincial Volumes - Monthly Activity



Monthly Activity by Zone

Figure 4 provides a summary of the monthly activity that occurred between the December 1 report and the January 1 report.

Figure 4: Total Zonal Monthly Activity



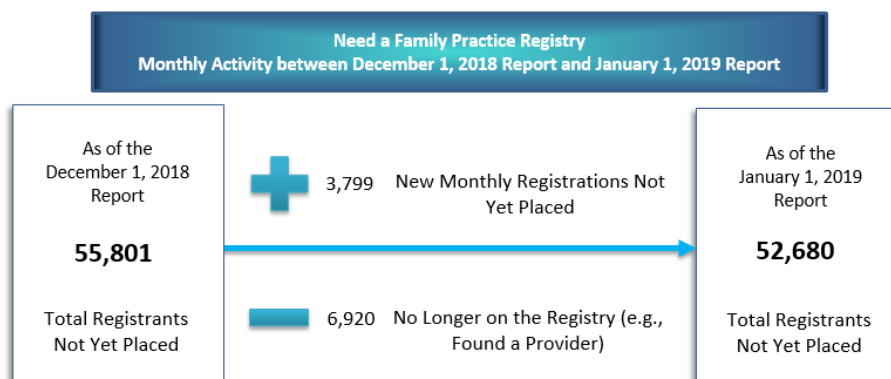
		Dec 1, 2018	Jan 1, 2019	% Change	Jan 1, 2019	Jan 1, 2019
Central Zone	Bedford / Sackville, Dartmouth / Southeastern, Eastern Shore Musquodoboit, Halifax Peninsula / Chebucto, and West Hants	26,405	23,829	-9.8%	5.8%	29,389
Eastern Zone	Antigonish and Guysborough, Cape Breton County, and Inverness / Victoria / Richmond	4,546	4,355	-4.2%	2.7%	12,007
Northern Zone	Colchester East Hants, Cumberland, and Pictou County	7,639	7,716	1.0%	5.1%	7,677
Western Zone	Annapolis and Kings, Queens and Lunenburg, and Yarmouth / Shelburne / Digby	17,204	16,780	-2.5%	8.5%	12,127
Unknown Geography	Unknown Geography	7	-	-	-	99
NOVA SCOTIA	TOTAL ACROSS NOVA SCOTIA	55,801	52,680	-5.6%	5.7%	61,299

**Not yet placed percent of the population relative to the geography's population (i.e., zone)*

Monthly Registry Activity

Specific to the NAFP registry during the month of December, 3,799 new registrations occurred (people who need a family practice) and 6,920 registrants were removed from the registry. People are removed from the registry because they were assisted with finding a family practice or for other reasons, such as already having found a provider when contacted by NSHA or having a duplicate registration. Figure 5 highlights the overall activity in the NAFP registry during the month of December 2018.

Figure 5: Monthly NAFP Registry Activity

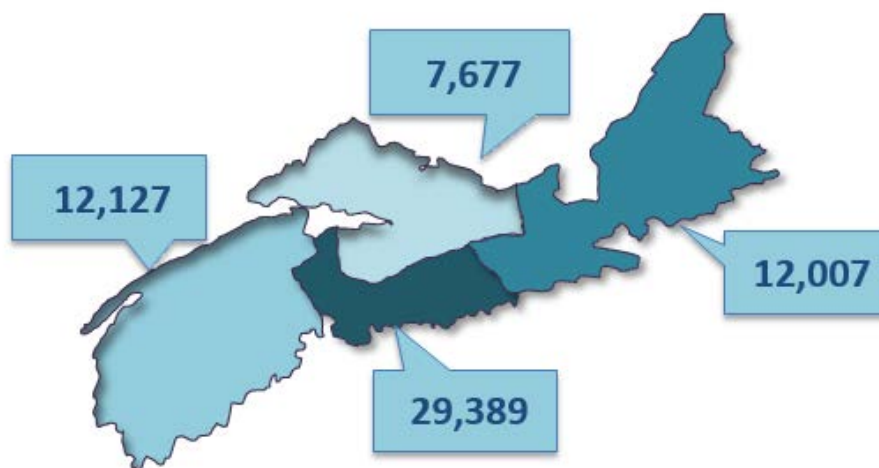


The registry is dynamic and updated each day. Every day registrants are added and removed. Figure 5 is a simplified graphic that compares two snapshots, one month apart, without the detailed day-to-day activity that occurs in between those two points in time.

3 | TOTAL ZONAL VOLUMES: FOUND A PRIMARY CARE PROVIDER

As of January 1, 61,299 Nova Scotians have found a primary care provider who were registered on the NAFP registry or identified through other routes as tracked by NSHA, since November 2016. Figure 6 depicts the breakdown of individuals, by zone, that have found a provider.

Figure 6: Total Zonal Volumes - Found a Primary Care Provider



*Note: 99 have an unknown zone

Table 1 provides the geographic breakdown of the number of people by zone, network, and cluster that found a primary care provider as reported through the NAFP registry or other routes tracked by NSHA, since November 2016.

Table 1: Total Zone, Network, and Cluster Volumes - Found a Primary Care Provider – January 1, 2019 Report

Total Zone, Network, and Cluster Volumes - Found a Primary Care Provider – January 1, 2019 Report	
Zone/Network/Cluster	Total # Found a Provider
Central	29,389
Bedford / Sackville	3,848
Bedford / Hammonds Plains	1,665
Fall River / Waverley	450
Sackville North / Beaverbank / Mount Uniacke	907
Sackville South	826
Dartmouth / Southeastern	8,542
Cole Harbour / Eastern Passage	1,767
Dartmouth East	2,976
Dartmouth North	1,535

Total Zone, Network, and Cluster Volumes - Found a Primary Care Provider – January 1, 2019 Report	
Zone/Network/Cluster	Total # Found a Provider
Dartmouth South	1,560
Preston / Lawrencetown / Lake Echo	704
Eastern Shore Musquodoboit	1,828
Eastern Shore Musquodoboit	1,828
Halifax Peninsula / Chebucto	9,549
Armdale / Spryfield / Herring Cove	1,418
Clayton Park	1,707
Fairview	850
Halifax Chebucto	969
Halifax Citadel	969
Halifax Needham	1,350
Sambro Loop Area	591
Tantallon / Timberlea / St.Margaret's Bay	1,695
West Hants	5,622
West Hants	5,622
Eastern	12,007
Antigonish and Guysborough	433
Antigonish	322
Guysborough / Canso	84
Sherbrooke	27
Cape Breton County	9,232
Dominion / Glace Bay	1,762
Florence / Sydney Mines / North Sydney	1,926
New Waterford	935
Sydney	4,609
Inverness / Victoria / Richmond	2,342
Baddeck / Whycomomagh	623
Cheticamp	558
Dingwall	20
Inverness	191
Port Hawkesbury / Isle Madame / L'Ardoise	950
Northern	7,677
Colchester East Hants	4,017
East Hants Corridor	175
Economy / Glenholme	58
Hants North	376
South Colchester	213
Truro and Area	3,195
Cumberland	1,398
Amherst	177
North Cumberland / North Shore	641
South Cumberland	143
Springhill	437

Total Zone, Network, and Cluster Volumes - Found a Primary Care Provider – January 1, 2019 Report	
Zone/Network/Cluster	Total # Found a Provider
Pictou County	2,262
New Glasgow / Westville / Stellarton	1,794
Pictou West	468
Western	12,127
Annapolis and Kings	5,317
Annapolis Royal	126
Berwick	393
Kentville	2,377
Middleton	1,670
Wolfville	751
Queens and Lunenburg	3,499
Bridgewater	738
Chester	996
Liverpool	1,295
Lunenburg / Mahone Bay	470
Yarmouth / Shelburne / Digby	3,311
Digby / Clare / Weymouth	1,044
Shelburne / Lockeport	822
Yarmouth	1,445
Unknown	99
Total Found a Provider	61,299

4 | TOTAL ZONAL VOLUMES – NOT YET PLACED

There are 52,680 registrants not yet placed with a family practice as of the January 1 report. The total volumes by zone are:

- Central Zone: 23,829 registrations
- Eastern Zone: 4,355 registrations
- Northern Zone: 7,716 registrations
- Western Zone: 16,780 registrations

Figure 7 gives a high-level overview of the volume of NAFP registrants who are not yet placed, by zone, as a percent of the total Nova Scotia population based on 2011 census counts.

Figure 7: Total Zonal Volumes - Not Yet Placed as a Percent of the Total Nova Scotia Population

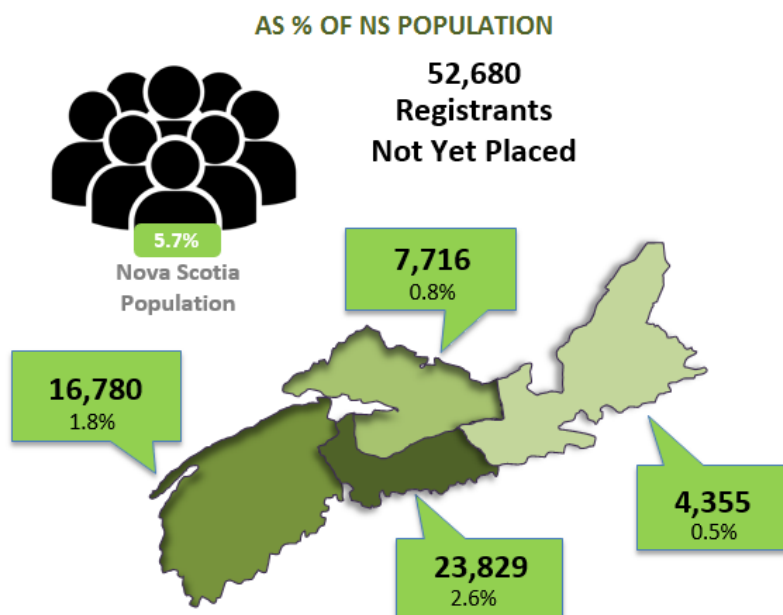


Table 2 gives a detailed geographical breakdown of the volume of registrants not yet placed by zone, network, and cluster and as a percent of the corresponding Nova Scotia population by zone, network, and cluster.

Table 2: Total Volumes Not Yet Placed by Zone, Network, and Cluster and as Percent of Population by Zone, Network, and Cluster

Total Zone, Network, and Cluster Volumes – Not Yet Placed – January 1, 2019 Report			
Zone/Network/Cluster	Total # Not Yet Placed	Population by Zone, Network, Cluster (2011)	% of Population by Zone, Network, Cluster (2011)
Central	23,829	409,706	5.8%
Bedford / Sackville	4,347	87,838	4.9%
Bedford / Hammonds Plains	1,964	30,109	6.5%
Fall River / Waverley	516	13,994	3.7%
Sackville North / Beaverbank / Mount Uniacke	1,010	22,356	4.5%
Sackville South	857	21,379	4.0%

Total Zone, Network, and Cluster Volumes – Not Yet Placed – January 1, 2019 Report			
Zone/Network/Cluster	Total # Not Yet Placed	Population by Zone, Network, Cluster (2011)	% of Population by Zone, Network, Cluster (2011)
Dartmouth / Southeastern	7,697	115,427	6.7%
Cole Harbour / Eastern Passage	2,375	36,902	6.4%
Dartmouth East	1,328	23,616	5.6%
Dartmouth North	1,562	19,238	8.1%
Dartmouth South	2,053	24,719	8.3%
Preston / Lawrencetown / Lake Echo	379	10,952	3.5%
Eastern Shore Musquodoboit	623	18,165	3.4%
Eastern Shore Musquodoboit	623	18,165	3.4%
Halifax Peninsula / Chebucto	10,937	167,379	6.5%
Armdale / Spryfield / Herring Cove	1,470	23,502	6.3%
Clayton Park	3,336	34,439	9.7%
Fairview	1,228	15,789	7.8%
Halifax Chebucto	1,442	18,764	7.7%
Halifax Citadel	1,617	20,055	8.1%
Halifax Needham	1,174	20,192	5.8%
Sambro Loop Area	368	13,408	2.7%
Tantallon / Timberlea / St.Margaret's Bay	302	21,230	1.4%
West Hants	225	20,897	0.8%
West Hants	225	20,897	0.8%
Eastern	4,355	163,450	2.7%
Antigonish and Guysborough	324	27,548	1.2%
Antigonish	304	19,583	1.6%
Guysborough / Canso	13	5,122	0.3%
Sherbrooke	7	2,843	0.2%
Cape Breton County	3,337	102,397	3.3%
Dominion / Glace Bay	910	21,782	4.2%
Florence / Sydney Mines / North Sydney	798	19,870	4.0%
New Waterford	597	9,757	6.1%
Sydney	1,032	50,988	2.0%
Inverness / Victoria / Richmond	694	33,505	2.1%
Baddeck / Whycomomagh	109	5,382	2.0%
Cheticamp	<5	4,688	0.1%
Inverness	36	4,667	0.8%
Port Hawkesbury / Isle Madame / L'Ardoise	540	16,035	3.4%
Dingwall	5	2,733	0.2%
Northern	7,716	150,409	5.1%

Colchester East Hants	4,073	69,991	5.8%
East Hants Corridor	655	12,860	5.1%
Economy / Glenholme	160	5,078	3.2%
Hants North	121	6,613	1.8%
South Colchester	226	10,001	2.3%
Truro and Area	2,911	35,439	8.2%
Cumberland	1,031	34,750	3.0%
Amherst	304	14,819	2.1%
North Cumberland / North Shore	575	8,395	6.8%
South Cumberland	65	4,311	1.5%
Springhill	87	7,225	1.2%
Pictou County	2,612	45,668	5.7%
New Glasgow / Westville / Stellarton	2,029	34,916	5.8%
Pictou West	583	10,752	5.4%
Western	16,780	196,284	8.5%
Annapolis and Kings	8,202	78,507	10.4%
Annapolis Royal	667	6,026	11.1%
Berwick	2,187	13,161	16.6%
Kentville	1,696	24,944	6.8%
Middleton	3,122	21,022	14.9%
Wolfville	530	13,354	4.0%
Queens and Lunenburg	5,222	59,384	8.8%
Bridgewater	2,765	28,417	9.7%
Chester	825	12,271	6.7%
Liverpool	945	10,908	8.7%
Lunenburg / Mahone Bay	687	7,788	8.8%
Yarmouth / Shelburne / Digby	3,356	58,393	5.7%
Digby / Clare / Weymouth	2,224	18,899	11.8%
Shelburne / Lockeport	426	14,506	2.9%
Yarmouth	706	24,988	2.8%
Total # Not Yet Placed	52,680	919,849	5.7%