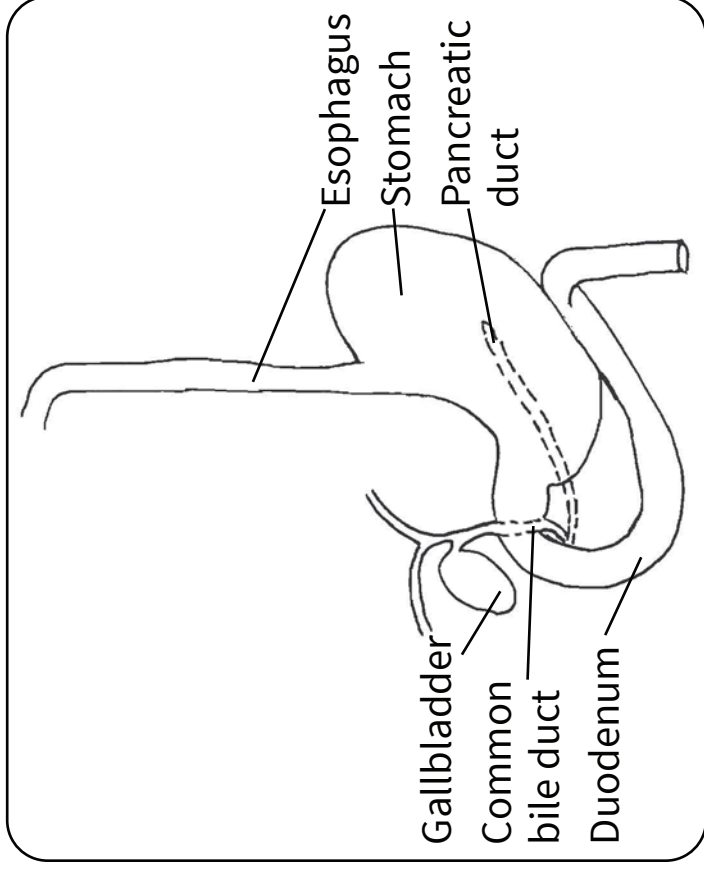




# ERCP

## What is ERCP?

ERCP is an exam of the common bile duct, gallbladder and the pancreatic duct. The doctor will do this test with a flexible tube that has a light at the tip.



## What are possible complications of ERCP?

- ERCP is a well-tolerated procedure when performed by doctors who are specially trained and experienced in the technique. Complications requiring hospitalization can happen, but they are not common.
- Complications can include pancreatitis (inflammation or infection of the pancreas), infections, bowel perforation (tear), and bleeding.
- Some patients may have a reaction to the sedative.
- Sometimes the test cannot be completed for technical reasons.
- Risks vary depending on why the test is done and what is found. Your doctor will talk about the risks with you before the test.

**What are your questions? Please ask your doctor and/or nurse, or call your specialist.**  
**We are here to help you.**

**Call your doctor or go to the nearest Emergency Department if you have:**

- > stomach pain
- > fever
- > chills
- > nausea (feel sick to your stomach)
- > vomiting (throwing up)
- > black bowel movement (poop)

**What do I need to know if I've had sedation?**

- **You must have a responsible adult take you home and care for you.**
- Do not go home on a bus or walk home. You may only go home in a taxi if you have a responsible adult with you who can help you if needed.

**For 24 hours after sedation**

- **Do not** drive a car or operate heavy machinery.
- **Do not** drink alcohol.
- **Do not** provide care for others.
- **Do not** sign any legal forms or important papers.

**What happens before the ERCP?**

Because you will have sedation to relax you, a responsible adult must be present and stay in the hospital during your test. They must also take you home and stay with you overnight after your procedure. If this is not possible, call your specialist, as we may have to cancel your test.

- Your specialist will arrange for you to have a blood test.
- Do not eat or drink anything after midnight. Your doctor may let you have clear liquids before 8 a.m. if your test is in the afternoon.
- Bring a list of the medications you are taking to the hospital.
- Tell your doctor about any allergies.
- If you are taking heart, blood pressure or breathing pills, you may take them on the day of the test.
- If you take pills or insulin for diabetes, check with your specialist for instructions.
- If you take blood thinners, such as ASA (Aspirin®), Aspirin®-containing products or warfarin, check with your specialist for instructions.
- If you need antibiotics for tests or dental work, call your specialist before the test.

- Do not wear any jewelry or bring valuables to the hospital.
- Please do not use perfumed products such as hairspray or scented deodorant before your visit. NSHA has a scent-free policy.

**Please call 902-473-4140 if you need to cancel this test so we can book another patient.**

### **Where do I go on the day of my test?**

You must register at the kiosk on the main floor in either the Dickson Building or Centennial Building (main entrance).

### **How is the test done?**

- An intravenous (IV) is started in your right arm. You will get a sedative to help you relax and pain medication to relieve discomfort.
- You may be asked to gargle or have your throat sprayed with a liquid that will freeze your throat.
- The doctor will pass a flexible tube through your mouth, stomach, and duodenum and into the common bile duct, gallbladder, and pancreatic duct. As the tube goes through your throat, you may feel like gagging.

- A dye will be injected through the tube. We will take X-rays. The X-rays will show the common bile duct, gallbladder and pancreatic duct. A tiny cut may be made in the common opening to the ducts from the liver and the pancreas.
- The test takes about 1 hour.

### **After the test**

- The nurse will check your blood pressure and pulse.
- You will be able to go home about 1-2 hours after the test.
- Do not eat or drink for 3 hours after the test.
- The nurse will take the IV out before you go home.
- Drink only clear fluids (such as water, tea or coffee without milk, apple juice, broth, Gatorade®, etc. ) for the rest of the day.
- You will be able to go back to a normal diet the next day.