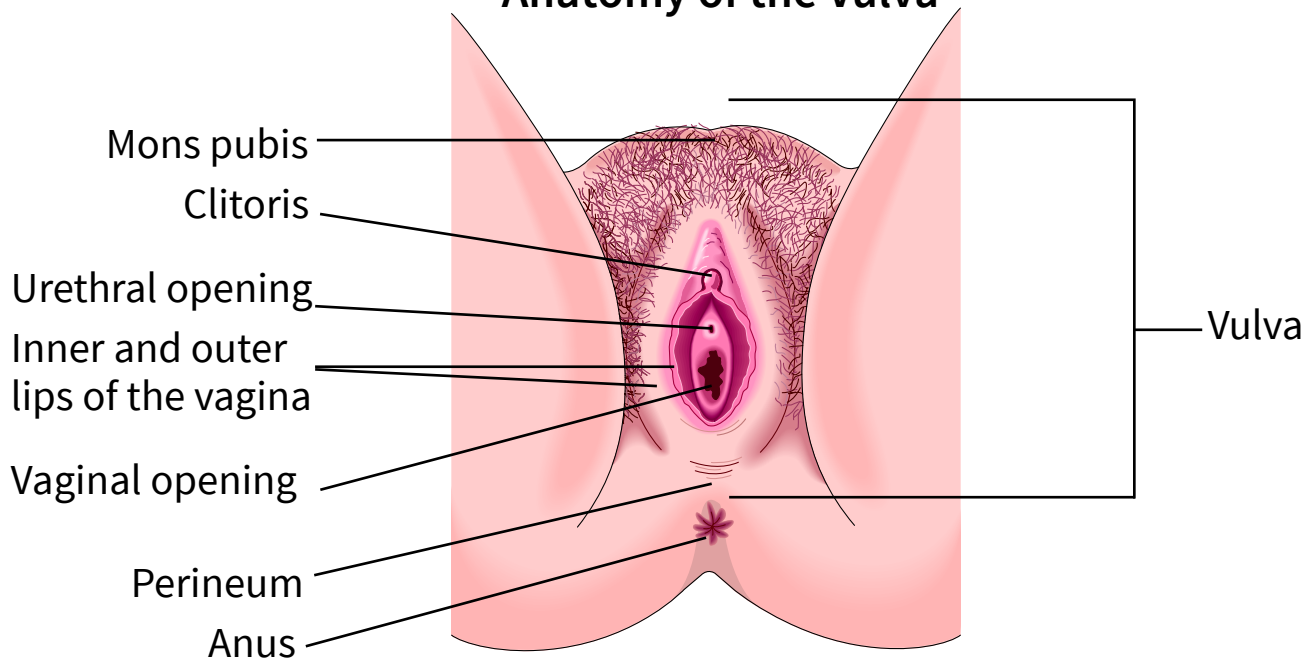


How to Apply Your Steroid Ointment

Anatomy of the Vulva



- You have been prescribed a **steroid ointment** called _____. This medication helps to lower inflammation (redness, swelling, pain) caused by a skin condition on your vulva called:

<input type="checkbox"/> Lichen sclerosus	<input type="checkbox"/> Psoriasis
<input type="checkbox"/> Lichen simplex chronicus	<input type="checkbox"/> Zoon's vulvitis
<input type="checkbox"/> Lichen planus	<input type="checkbox"/> Other: _____
- This ointment is safe to apply to (put on) your vulva if it has been prescribed to you for this condition. It is very important to put this ointment on **exactly as your health care provider tells you** (see highlighted area of picture above). Be careful where you apply the ointment. Putting it on the wrong area can irritate other skin areas or have other side effects.

Remember:

- Wash your hands just before applying the ointment, and again after you are done.
- Use only a small, pea-sized amount of the ointment.
- Apply the ointment **only** to the affected area. **Do not** apply it to healthy skin areas.
- Do not** stop your treatment unless your health care provider says it is OK.

**What are your questions?
Please ask. We are here to help you.**

This pamphlet is for educational purposes only. It is not intended to replace the advice or professional judgment of a health care provider. The information may not apply to all situations. If you have any questions, please ask your health care provider.

Find all patient education resources here:
www.nshealth.ca/patient-education-resources

Connect with a registered nurse in Nova Scotia any time:
Call 811 or visit: <https://811.novascotia.ca>

*Prepared by: Gynecolposcopy Clinic
Illustration by: LifeART Super Anatomy 8 Images, Copyright © 1994, TechPool Studios Corp. USA
Designed and Managed by: Library Services*