

FINDING A PRIMARY CARE PROVIDER IN NOVA SCOTIA

December 2018 Report

Prepared for: Public



Reporting Cycle: Monthly

INTRODUCTION

Background

Nova Scotia Health Authority's Need a Family Practice (NAFP) registry was launched on November 1, 2016. The registry provides a coordinated and consistent provincial approach for tracking Nova Scotians who self identify as not having access to a primary care provider (family physician or nurse practitioner).

People can register themselves and their family members on the NAFP registry online or by telephone to be contacted by a participating practice/provider that is accepting new patients. There are two main ways that contribute to how we report the number of people who have found a primary care provider in Nova Scotia: (1) Through names that are on the NAFP Registry and; (2) names that are not on the NAFP Registry and are sent to NSHA through other routes, such as with local family practices.

 1. NSHA's Need a Family Practice Registry	 2. Other Routes
People can register themselves and their family members on the Need a Family Practice (NAFP) Registry online or by telephone to be contacted by a participating practice/provider that is accepting new patients.	People can find a primary care provider in other ways, such as with local family practices, through a family member who is an existing patient of a practice, or through a referral by another provider.
NEW: Patient Attachment Incentive Trust – information on the number of patients accepted by family doctors who received the patient attachment incentive between April and early November 2018 is now included in this report. ¹ The information was cross-referenced with the registry to remove those who now have a family practice. Patients identified through the Patient Attachment Incentive Trust who were not on the NAFP Registry are included in the 'Other Routes' category. This data will continue to be incorporated in the monthly reports.	

The term '**Found a Provider**' is used throughout the report to depict the approximate number of people in Nova Scotia who have found a primary care provider and were registered on the NAFP registry and through other routes as tracked by NSHA since November 2016. The term '**Not Yet Placed**' is used to depict the number of NAFP registrants who are seeking a primary care provider through means of registering for the NAFP registry.

The report highlights the overall volume of people who have found a provider and who are not yet placed by geography (zone, network, and cluster), as well as by month, with data as of **November 25, 2018**.

Report Format

This report is divided into the following sections:

1. Total Provincial Volumes

¹ More information on the Patient Attachment Incentive Trust can be found at <https://novascotia.ca/dhw/publications/Patient-Attachment-Incentive-Trust-Report.pdf>

2. Monthly Activity
3. Total Zonal Volumes – Found a Provider
4. Total Zonal Volumes – Not Yet Placed

1 | TOTAL PROVINCIAL VOLUMES



Total Provincial Volumes – Found a Primary Care Provider

- Over the month of November, 5,322 people found a primary care provider. As well, information on the number of people accepted by family doctors between April and early November 2018 as a result of the patient attachment incentive has been included this month, for a total of 17,452 people who have found a primary care provider for this reporting period.
- The overall number of people in Nova Scotia who have found a primary care provider (NAFP registry and other routes) as tracked by NSHA since November 2016 is 54,047.



Total Provincial Volumes – Not Yet Placed

- As of the December 1, 2018 report, there were 55,801 registrants not yet placed with a family practice, which accounts for 6.1% of the total population in Nova Scotia (based on 2011 census data).
- This represents a 5.8% decrease from the November 1, 2018 report where 59,225 registrants were not yet placed.

Figure 1 identifies the number of people in Nova Scotia who have found a primary care provider who were on the NAFP registry or identified through other routes as tracked by NSHA since November 2016.

Figure 1: Total Provincial Volumes – Found a Primary Care Provider

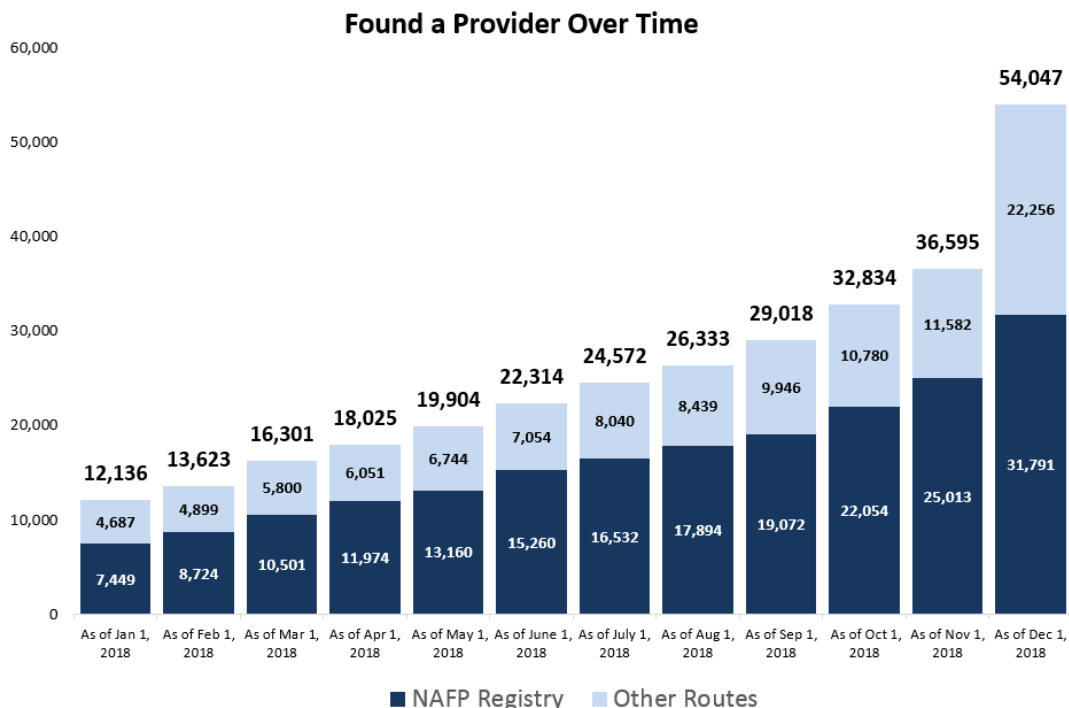
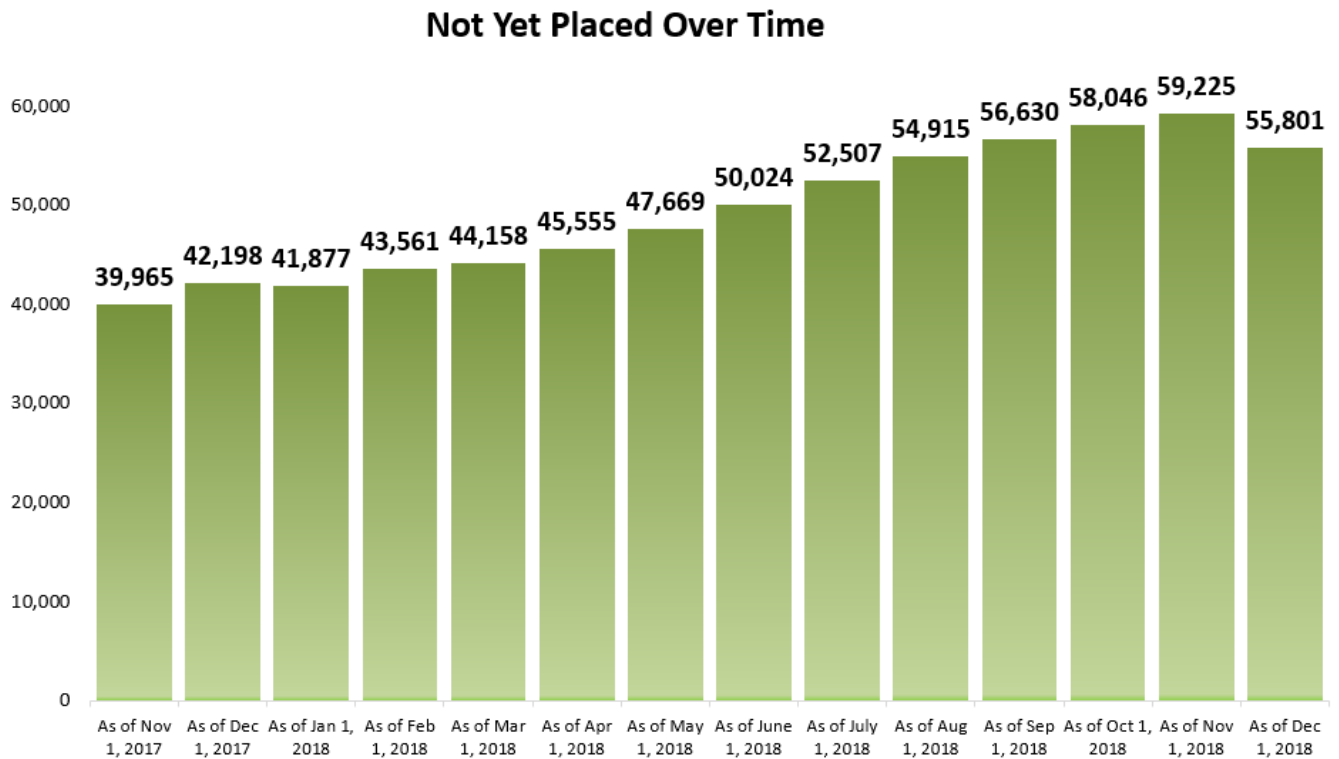


Figure 2 depicts the total number of registrants, by month, on the Need a Family Practice registry that are not yet placed with a family practice.

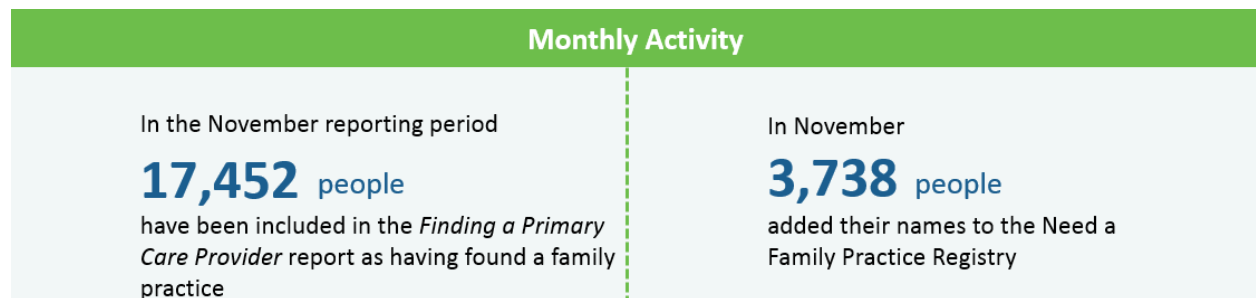
Figure 2: Total Provincial Volumes - Not Yet Placed by Month



2 | MONTHLY ACTIVITY

During the month of November, 5,322 people found a family doctor or nurse practitioner, and 3,738 people added their names to the Need a Family Practice registry. As well, information on the number of people who found a provider between April and early November 2018 as a result of the Patient Attachment Incentive Trust has been included this month, for a total 17,452 people who found a primary care provider in this reporting period. Figure 3 highlights the overall monthly activity during the month of November 2018.


Figure 3: Provincial Volumes - Monthly Activity



Monthly Activity by Zone

Figure 4 provides a summary of the monthly activity that occurred between the November 1 report and the December 1 report.

Figure 4: Total Zonal Monthly Activity



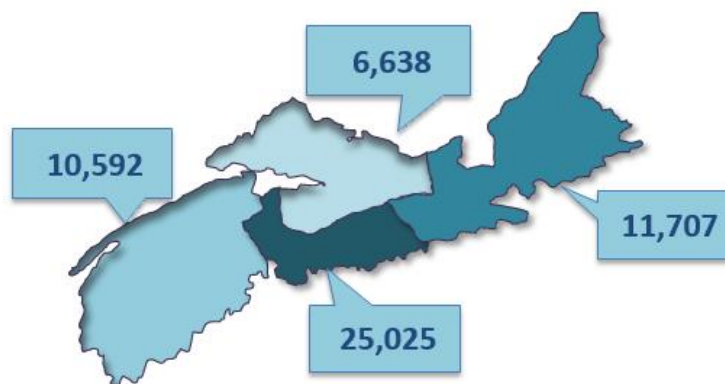
		Nov 1, 2018	Dec 1, 2018	% Change	Dec 1, 2018	Dec 1, 2018
Central Zone	Halifax Regional Municipality, Eastern Shore and West Hants Areas	29,544	26,405	-10.6%	6.4%	25,025
Eastern Zone	Cape Breton, Antigonish and Guysborough Areas	4,965	4,546	-8.4%	2.8%	11,707
Northern Zone	Colchester, Cumberland, and Pictou County Areas	7,327	7,639	4.3%	5.1%	6,638
Western Zone	Annapolis Valley, South West, and South Shore Areas	17,384	17,204	-1.0%	8.8%	10,592
Unknown Geography	Unknown Geography	5	7	-	-	85
NOVA SCOTIA	TOTAL ACROSS NOVA SCOTIA	59,225	55,801	-5.8%	6.1%	54,047

*Not yet placed percent of the population relative to the geography's population (i.e., zone)

3 | TOTAL ZONAL VOLUMES: FOUND A PRIMARY CARE PROVIDER

As of December 1, 54,047 Nova Scotians have found a primary care provider who were registered on the NAFP registry or identified through other routes as tracked by NSHA, since November 2016. Figure 5 depicts the breakdown of individuals, by zone, that have found a provider.

Figure 5: Total Zonal Volumes – Found a Primary Care Provider



*Note: 85 have an unknown zone

Table 1 provides the geographic breakdown of the number of people by zone, network, and cluster that found a primary care provider as reported through the NAFP registry or other routes tracked by NSHA, since November 2016.

Table 1: Total Zone, Network, and Cluster Volumes - Found a Primary Care Provider – December 1, 2018 Report

Total Zone, Network, and Cluster Volumes - Found a Primary Care Provider – December 1, 2018 Report	
Zone/Network/Cluster	Total # Found a Provider
Central	25,025
Bedford / Sackville	3,209
Bedford / Hammonds Plains	1,402
Fall River / Waverley	363
Sackville North / Beaverbank / Mount Uniacke	756
Sackville South	688
Dartmouth / Southeastern	7,354
Cole Harbour / Eastern Passage	1,406
Dartmouth East	2,754
Dartmouth North	1,280
Dartmouth South	1,241
Preston / Lawrencetown / Lake Echo	673
Eastern Shore Musquodoboit	1,635
Eastern Shore Musquodoboit	1,635
Halifax Peninsula / Chebucto	7,873
Armdale / Spryfield / Herring Cove	1,318
Clayton Park	1,432
Fairview	755
Halifax Chebucto	798
Halifax Citadel	759
Halifax Needham	821
Sambro Loop Area	495
Tantallon / Timberlea / St.Margaret's Bay	1,495
West Hants	4,954
West Hants	4,954
Eastern	11,707
Antigonish and Guysborough	397
Antigonish	301
Guysborough / Canso	71
Sherbrooke	25
Cape Breton County	9,056
Dominion / Glace Bay	1,719
Florence / Sydney Mines / North Sydney	1,859
New Waterford	885
Sydney	4,593

Total Zone, Network, and Cluster Volumes - Found a Primary Care Provider – December 1, 2018 Report	
Zone/Network/Cluster	Total # Found a Provider
Inverness / Victoria / Richmond	2,254
Baddeck / Whycomomagh	613
Cheticamp	550
Dingwall	14
Inverness	178
Port Hawkesbury / Isle Madame / L'Ardoise	899
Northern	6,638
Colchester East Hants	3,613
East Hants Corridor	141
Economy / Glenholme	41
Hants North	334
South Colchester	194
Truro and Area	2,903
Cumberland	1,261
Amherst	151
North Cumberland / North Shore	602
South Cumberland	137
Springhill	371
Pictou County	1,764
New Glasgow / Westville / Stellarton	1,636
Pictou West	128
Western	10,592
Annapolis and Kings	5,003
Annapolis Royal	117
Berwick	341
Kentville	2,230
Middleton	1,634
Wolfville	681
Queens and Lunenburg	2,672
Bridgewater	587
Chester	796
Liverpool	837
Lunenburg / Mahone Bay	452
Yarmouth / Shelburne / Digby	2,917
Digby / Clare / Weymouth	978
Shelburne / Lockeport	729
Yarmouth	1,210
Unknown	85
Total Found a Provider	54,047

4 | TOTAL ZONAL VOLUMES – NOT YET PLACED

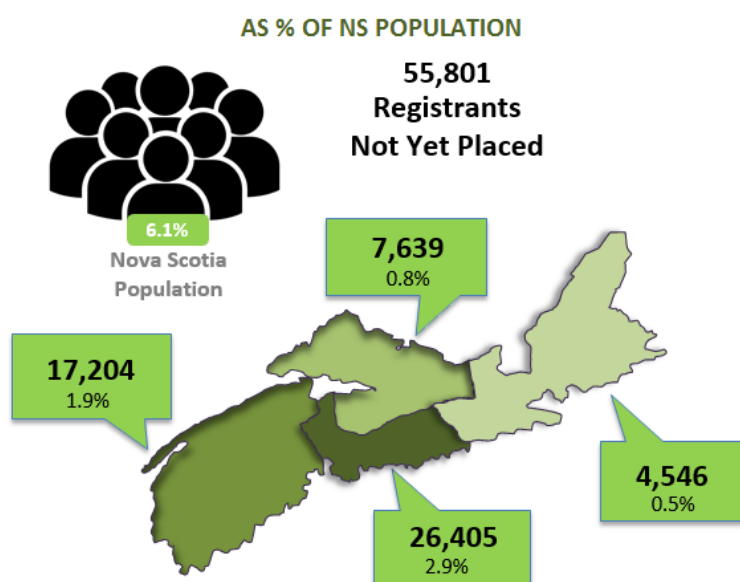
There are 55,801 registrants not yet placed with a family practice as of the December 1 report. The total volumes by zone* are:

- Central Zone: 26,405 registrations
- Eastern Zone: 4,546 registrations
- Northern Zone: 7,639 registrations
- Western Zone: 17,204 registrations

*Note: 7 registrations have an unknown zone

Figure 6 gives a high-level overview of the volume of NAFP registrants who are not yet placed, by zone, as a percent of the total Nova Scotia population based on 2011 census counts.

Figure 6: Total Zonal Volumes - Not Yet Placed as a Percent of the total Nova Scotia Population



*Note: 7 registrations have an unknown zone

Table 2 gives a detailed geographical breakdown of the volume of registrants not yet placed by zone, network, and cluster and as a percent of the corresponding Nova Scotia population by zone, network, and cluster.

Table 2: Total Volumes Not Yet Placed by Zone, Network, and Cluster and as Percent of Population by Zone, Network, and Cluster

Total Zone, Network, and Cluster Volumes – Not Yet Placed – December 1, 2018 Report			
Zone/Network/Cluster	Total # Not Yet Placed	Population by Zone, Network, Cluster (2011)	% of Population by Zone, Network, Cluster (2011)
Central	26,405	409,706	6.4%
Bedford / Sackville	4,774	87,838	5.4%
Bedford / Hammonds Plains	2,118	30,109	7.0%

Total Zone, Network, and Cluster Volumes – Not Yet Placed – December 1, 2018 Report			
Zone/Network/Cluster	Total # Not Yet Placed	Population by Zone, Network, Cluster (2011)	% of Population by Zone, Network, Cluster (2011)
Fall River / Waverley	592	13,994	4.2%
Sackville North / Beaverbank / Mount Uniacke	1,120	22,356	5.0%
Sackville South	944	21,379	4.4%
Dartmouth / Southeastern	8,618	115,427	7.5%
Cole Harbour / Eastern Passage	2,617	36,902	7.1%
Dartmouth East	1,486	23,616	6.3%
Dartmouth North	1,796	19,238	9.3%
Dartmouth South	2,297	24,719	9.3%
Preston / Lawrencetown / Lake Echo	422	10,952	3.9%
Eastern Shore Musquodoboit	681	18,165	3.7%
Eastern Shore Musquodoboit	681	18,165	3.7%
Halifax Peninsula / Chebucto	12,164	167,379	7.3%
Armdale / Spryfield / Herring Cove	1,507	23,502	6.4%
Clayton Park	3,472	34,439	10.1%
Fairview	1,281	15,789	8.1%
Halifax Chebucto	1,565	18,764	8.3%
Halifax Citadel	1,739	20,055	8.7%
Halifax Needham	1,711	20,192	8.5%
Sambro Loop Area	442	13,408	3.3%
Tantallon / Timberlea / St.Margaret's Bay	447	21,230	2.1%
West Hants	168	20,897	0.8%
West Hants	168	20,897	0.8%
Eastern	4,546	163,450	2.8%
Antigonish and Guysborough	327	27,548	1.2%
Antigonish	304	19,583	1.6%
Guysborough / Canso	18	5,122	0.4%
Sherbrooke	5	2,843	0.2%
Cape Breton County	3,486	102,397	3.4%
Dominion / Glace Bay	929	21,782	4.3%
Florence / Sydney Mines / North Sydney	881	19,870	4.4%
New Waterford	605	9,757	6.2%
Sydney	1,071	50,988	2.1%
Inverness / Victoria / Richmond	733	33,505	2.2%
Baddeck / Whycomomagh	110	5,382	2.0%
Cheticamp	7	4,688	0.1%
Inverness	45	4,667	1.0%

Total Zone, Network, and Cluster Volumes – Not Yet Placed – December 1, 2018 Report			
Zone/Network/Cluster	Total # Not Yet Placed	Population by Zone, Network, Cluster (2011)	% of Population by Zone, Network, Cluster (2011)
Port Hawkesbury / Isle Madame / L'Ardoise	570	16,035	3.6%
Dingwall	< 5	2,733	0.0%
Northern	7,639	150,409	5.1%
Colchester East Hants	4,007	69,991	5.7%
East Hants Corridor	655	12,860	5.1%
Economy / Glenholme	159	5,078	3.1%
Hants North	119	6,613	1.8%
South Colchester	223	10,001	2.2%
Truro and Area	2,851	35,439	8.0%
Cumberland	1,021	34,750	2.9%
Amherst	315	14,819	2.1%
North Cumberland / North Shore	574	8,395	6.8%
South Cumberland	52	4,311	1.2%
Springhill	80	7,225	1.1%
Pictou County	2,611	45,668	5.7%
New Glasgow / Westville / Stellarton	2,015	34,916	5.8%
Pictou West	596	10,752	5.5%
Western	17,204	196,284	8.8%
Annapolis and Kings	7,993	78,507	10.2%
Annapolis Royal	618	6,026	10.3%
Berwick	2,169	13,161	16.5%
Kentville	1,780	24,944	7.1%
Middleton	2,871	21,022	13.7%
Wolfville	555	13,354	4.2%
Queens and Lunenburg	5,617	59,384	9.5%
Bridgewater	2,762	28,417	9.7%
Chester	911	12,271	7.4%
Liverpool	1,359	10,908	12.5%
Lunenburg / Mahone Bay	585	7,788	7.5%
Yarmouth / Shelburne / Digby	3,594	58,393	6.2%
Digby / Clare / Weymouth	2,265	18,899	12.0%
Shelburne / Lockeport	529	14,506	3.6%
Yarmouth	800	24,988	3.2%
Unknown	7	-	0.0%
Total # Not Yet Placed	55,801	919,849	6.1%