

FINDING A PRIMARY CARE PROVIDER IN NOVA SCOTIA

February 2019 Report

Prepared for: Public



Reporting Cycle: Monthly

INTRODUCTION

Background

Nova Scotia Health Authority’s Need a Family Practice (NAFP) registry was launched on November 1, 2016. The registry provides a coordinated and consistent provincial approach for tracking Nova Scotians who self identify as not having access to a primary care provider (family physician or nurse practitioner).

People can register themselves and their family members on the NAFP registry online or by telephone to be contacted by a participating practice/provider that is accepting new patients. There are two main ways that contribute to how we report the number of people who have found a primary care provider in Nova Scotia: (1) Through names that are on the NAFP Registry and; (2) names that are not on the NAFP Registry and are sent to NSHA through other routes.

|  1. NSHA’s Need a Family Practice Registry |  2. Other Routes |
|---|---|
| People can register themselves and their family members on the Need a Family Practice (NAFP) Registry online or by telephone to be contacted by a participating practice/provider that is accepting new patients. | People can find a primary care provider in other ways, such as with local family practices, through a family member who is an existing patient of a practice, or through a referral by another provider. Information on the number of patients accepted by family doctors who received the patient attachment incentive since April 2018 is also included in the ‘Other Routes’ category. |

The term **‘Found a Provider’** is used throughout the report to depict the approximate number of people in Nova Scotia who have found a primary care provider and were registered on the NAFP registry and through other routes as tracked by NSHA since November 2016. The term **‘Not Yet Placed’** is used to depict the number of NAFP registrants who are seeking a primary care provider and have added their names to the NAFP registry.

The report highlights the overall volume of people who have found a provider and who are not yet placed by geography (zone, network, and cluster), as well as by month, with data as of **January 25, 2019**.

Report Format

This report is divided into the following sections:

1. Total Provincial Volumes
2. Monthly Activity
3. Total Zonal Volumes – Found a Provider
4. Total Zonal Volumes – Not Yet Placed

1 | TOTAL PROVINCIAL VOLUMES



Total Provincial Volumes – Found a Primary Care Provider

- Over the month of January, 7,924 people found a primary care provider.
- The overall number of people in Nova Scotia who have found a primary care provider (NAFP registry and other routes) as tracked by NSHA since November 2016 is 69,223.



Total Provincial Volumes – Not Yet Placed

- As of the February 1, 2019 report, there were 51,845 registrants not yet placed with a family practice, which accounts for 5.6% of the total population in Nova Scotia (based on 2011 census data).
- This represents a 1.6% decrease from the January 1, 2019 report where 52,680 registrants were not yet placed.

Figure 1 identifies the number of people in Nova Scotia who have found a primary care provider who were on the NAFP registry or identified through other routes as tracked by NSHA since November 2016.

Figure 1: Total Provincial Volumes - Found a Primary Care Provider by Month

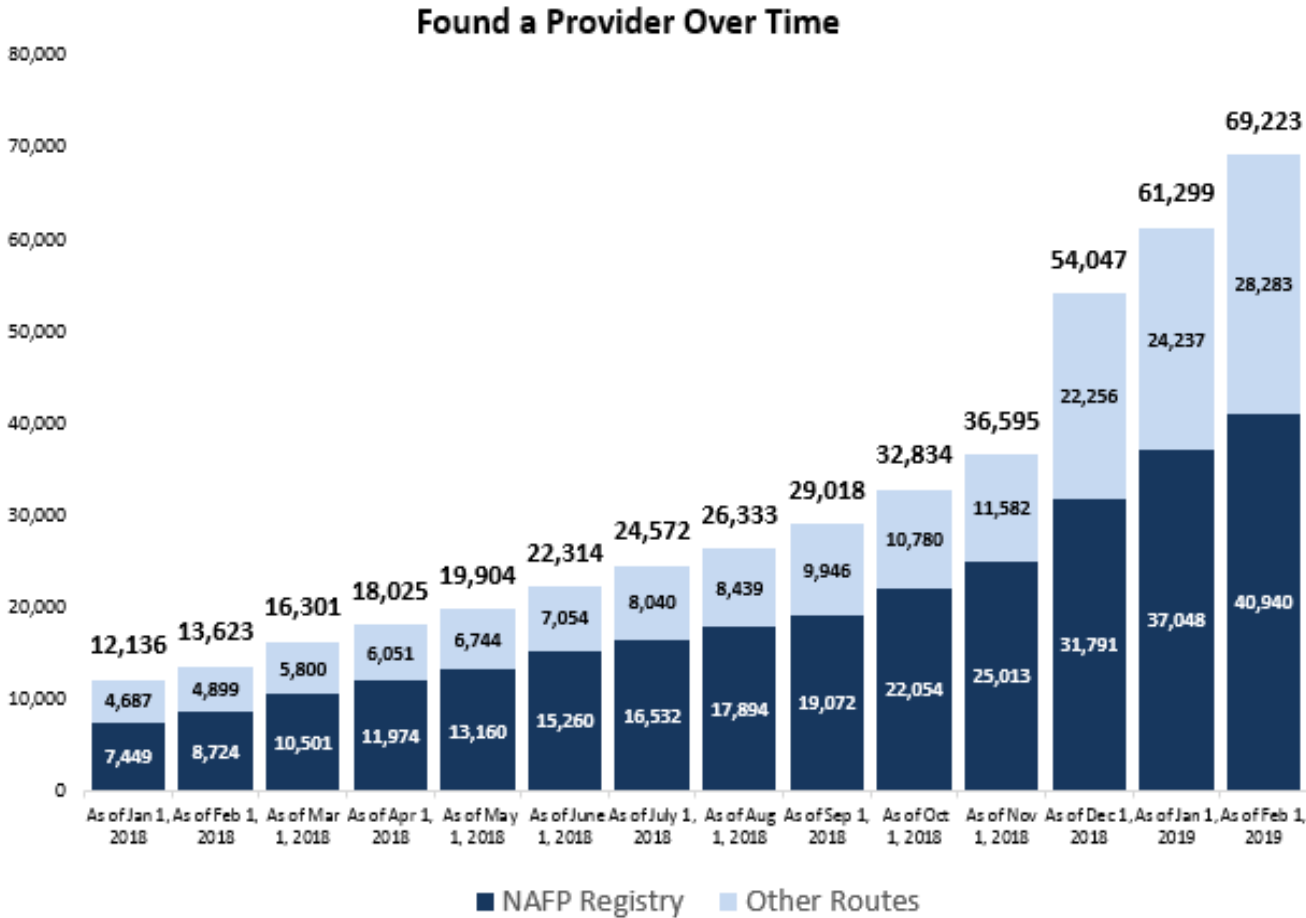
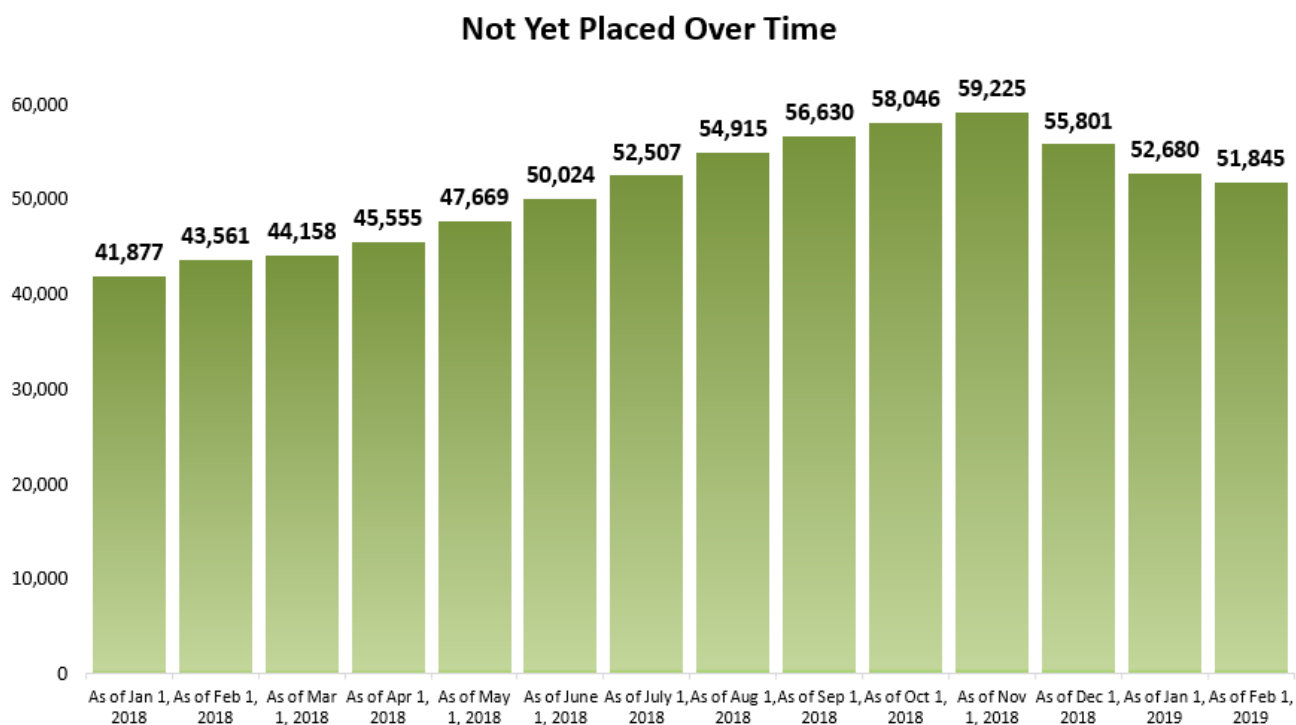


Figure 2 depicts the total number of registrants, by month, on the Need a Family Practice registry that are not yet placed with a family practice.

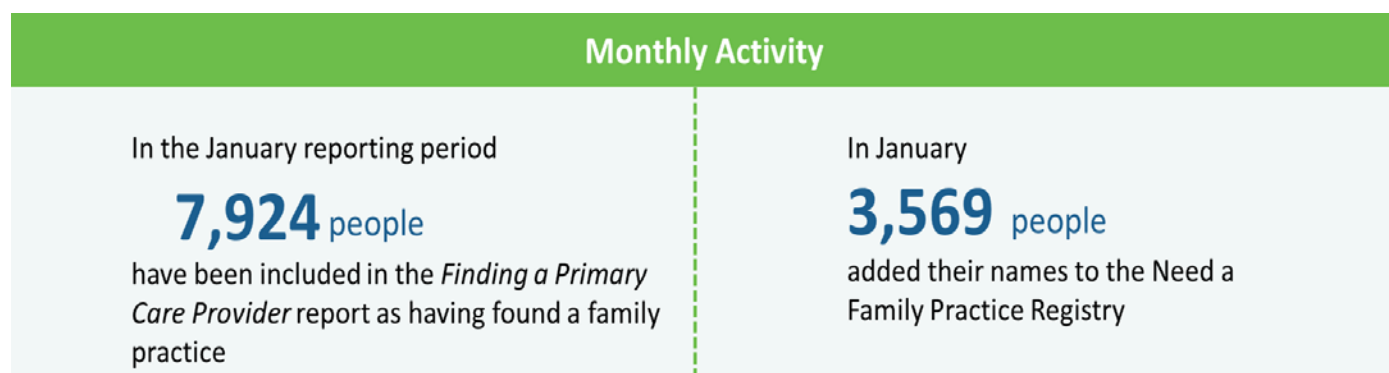
Figure 2: Total Provincial Volumes - Not Yet Placed by Month



2 | MONTHLY ACTIVITY

During the month of January, 7,924 people found a family doctor or nurse practitioner, and 3,569 people added their names to the Need a Family Practice registry as of February 1. Figure 3 highlights the overall monthly activity during the month of January 2019.


Figure 3: Provincial Volumes - Monthly Activity



Monthly Activity by Zone

Figure 4 provides a summary of the monthly activity that occurred between the January 1 report and the February 1 report.

Figure 4: Total Zonal Monthly Activity



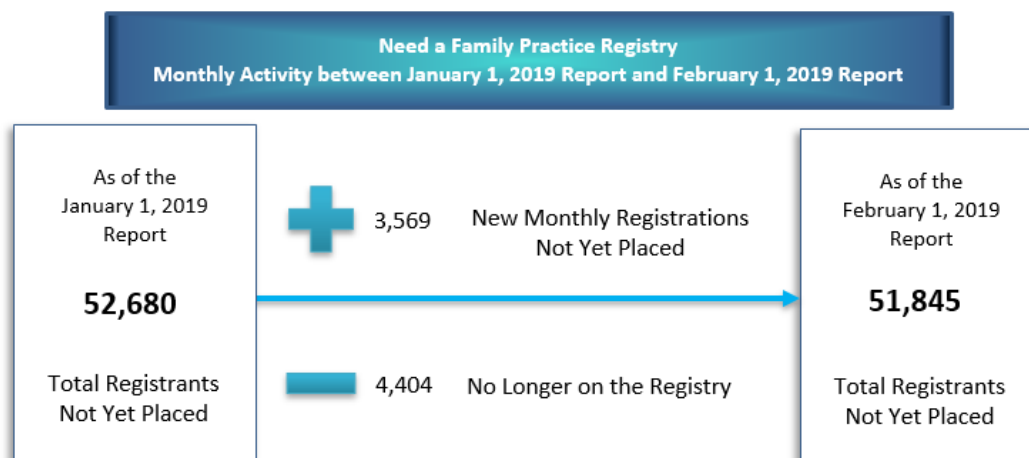
| | | Jan 1, 2019 | Feb 1, 2019 | % Change | Feb 1, 2019 | Feb 1, 2019 |
|--------------------------|--|---------------|---------------|--------------|-------------|---------------|
| Central Zone | Bedford/Sackville, Dartmouth/Southeastern, Eastern Shore Musquodoboit, Halifax Peninsula/Chebucto, and West Hants | 23,829 | 22,245 | -6.6% | 5.4% | 33,309 |
| Eastern Zone | Antigonish and Guysborough, Cape Breton County, and Inverness/Victoria/Richmond | 4,355 | 4,268 | -2.0% | 2.6% | 13,314 |
| Northern Zone | Colchester, Cumberland, and Pictou County | 7,716 | 8,205 | 6.3% | 5.5% | 9,414 |
| Western Zone | Annapolis and Kings, Queens and Lunenburg and Yarmouth/ Shelburne/Digby | 16,780 | 17,127 | 2.1% | 8.7% | 13,070 |
| Unknown Geography | Unknown Geography | - | - | - | - | 116 |
| NOVA SCOTIA | TOTAL ACROSS NOVA SCOTIA | 52,680 | 51,845 | -1.6% | 5.6% | 69,223 |

*Not yet placed percent of the population relative to the geography's population (i.e., zone)

Monthly Registry Activity

Specific to the NAFP registry during the month of January, 3,569 new registrations occurred (people who need a family practice) and 4,404 registrants were removed from the registry. People are removed from the registry because they were assisted with finding a family practice or for other reasons, such as already having found a provider when contacted by NSHA or having a duplicate registration. Figure 5 highlights the overall activity in the NAFP registry during the month of January 2019.

Figure 5: Monthly NAFP Registry Activity

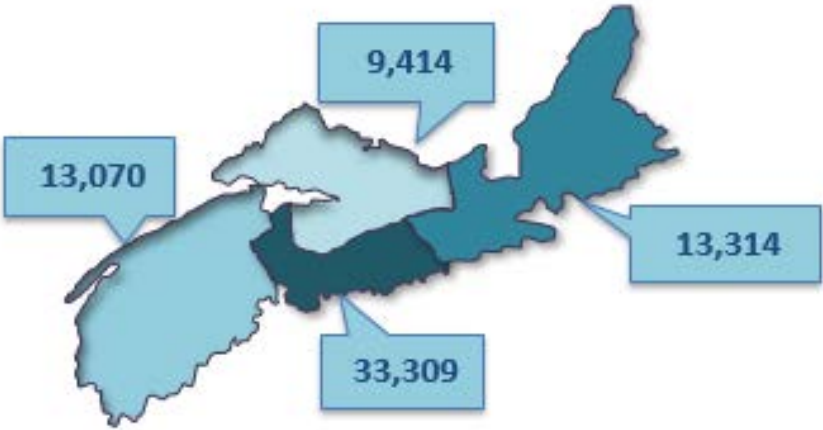


The registry is dynamic, with registrants being added and removed each day. Figure 5 is a simplified graphic that compares two snapshots, one month apart. It depicts the change in the registry total, showing the number of those who have newly registered in the past month, minus the number of people who were no longer on the registry, which is a total of the number of registrants who found a provider and those who have been removed from the registry for other reasons..

3 | TOTAL ZONAL VOLUMES: FOUND A PRIMARY CARE PROVIDER

As of February 1, 69,223 Nova Scotians have found a primary care provider who were registered on the NAFP registry or identified through other routes as tracked by NSHA, since November 2016. Figure 6 depicts the breakdown of individuals, by zone, that have found a provider.

Figure 6: Total Zonal Volumes - Found a Primary Care Provider



*Note: 116 have an unknown zone

Table 1 provides the geographic breakdown of the number of people by zone, network, and cluster that found a primary care provider as reported through the NAFP registry or other routes tracked by NSHA, since November 2016.

Table 1: Total Zone, Network, and Cluster Volumes - Found a Primary Care Provider – February 1, 2019 Report

| Total Zone, Network, and Cluster Volumes - Found a Primary Care Provider – February 1, 2019 Report | |
|--|--------------------------|
| Zone/Network/Cluster | Total # Found a Provider |
| Central | 33,309 |
| Bedford / Sackville | 4,419 |
| Bedford / Hammonds Plains | 1,932 |
| Fall River / Waverley | 536 |
| Sackville North / Beaverbank / Mount Uniacke | 1,009 |
| Sackville South | 942 |
| Dartmouth / Southeastern | 10,049 |
| Cole Harbour / Eastern Passage | 2,233 |

| Total Zone, Network, and Cluster Volumes - Found a Primary Care Provider – February 1, 2019 Report | |
|---|---------------------------------|
| Zone/Network/Cluster | Total # Found a Provider |
| Dartmouth East | 3,237 |
| Dartmouth North | 1,826 |
| Dartmouth South | 1,988 |
| Preston / Lawrencetown / Lake Echo | 765 |
| Eastern Shore Musquodoboit | 1,910 |
| Eastern Shore Musquodoboit | 1,910 |
| Halifax Peninsula / Chebucto | 11,296 |
| Armdale / Spryfield / Herring Cove | 1,654 |
| Clayton Park | 2,110 |
| Fairview | 1,250 |
| Halifax Chebucto | 1,171 |
| Halifax Citadel | 1,184 |
| Halifax Needham | 1,530 |
| Sambro Loop Area | 645 |
| Tantallon / Timberlea / St.Margaret's Bay | 1,752 |
| West Hants | 5,635 |
| West Hants | 5,635 |
| Eastern | 13,314 |
| Antigonish and Guysborough | 477 |
| Antigonish | 363 |
| Guysborough / Canso | 87 |
| Sherbrooke | 27 |
| Cape Breton County | 10,393 |
| Dominion / Glace Bay | 1,842 |
| Florence / Sydney Mines / North Sydney | 2,011 |
| New Waterford | 960 |
| Sydney | 5,580 |
| Inverness / Victoria / Richmond | 2,444 |
| Baddeck / Whycomomagh | 663 |
| Cheticamp | 560 |
| Dingwall | 23 |
| Inverness | 213 |
| Port Hawkesbury / Isle Madame / L'Ardoise | 985 |
| Northern | 9,414 |
| Colchester East Hants | 5,464 |
| East Hants Corridor | 201 |
| Economy / Glenholme | 64 |
| Hants North | 335 |
| South Colchester | 225 |
| Truro and Area | 4,639 |
| Cumberland | 1,444 |
| Amherst | 201 |
| North Cumberland / North Shore | 648 |

| Total Zone, Network, and Cluster Volumes - Found a Primary Care Provider – February 1, 2019 Report | |
|---|---------------------------------|
| Zone/Network/Cluster | Total # Found a Provider |
| South Cumberland | 153 |
| Springhill | 442 |
| Pictou County | 2,506 |
| New Glasgow / Westville / Stellarton | 1,910 |
| Pictou West | 596 |
| Western | 13,070 |
| Annapolis and Kings | 5,577 |
| Annapolis Royal | 128 |
| Berwick | 434 |
| Kentville | 2,494 |
| Middleton | 1,754 |
| Wolfville | 767 |
| Queens and Lunenburg | 3,884 |
| Bridgewater | 993 |
| Chester | 1,051 |
| Liverpool | 1,354 |
| Lunenburg / Mahone Bay | 486 |
| Yarmouth / Shelburne / Digby | 3,609 |
| Digby / Clare / Weymouth | 1,112 |
| Shelburne / Lockeport | 963 |
| Yarmouth | 1,534 |
| Unknown | 116 |
| Total Found a Provider | 69,223 |

4 | TOTAL ZONAL VOLUMES – NOT YET PLACED

There are 51,845 registrants not yet placed with a family practice as of the February 1 report. The total volumes by zone are:

- Central Zone: 22,245 registrations
- Eastern Zone: 4,268 registrations
- Northern Zone: 8,205 registrations
- Western Zone: 17,127 registrations

Figure 7 gives a high-level overview of the volume of NAFP registrants who are not yet placed, by zone, as a percent of the total Nova Scotia population based on 2011 census counts.

Figure 7: Total Zonal Volumes - Not Yet Placed as a Percent of the Total Nova Scotia Population

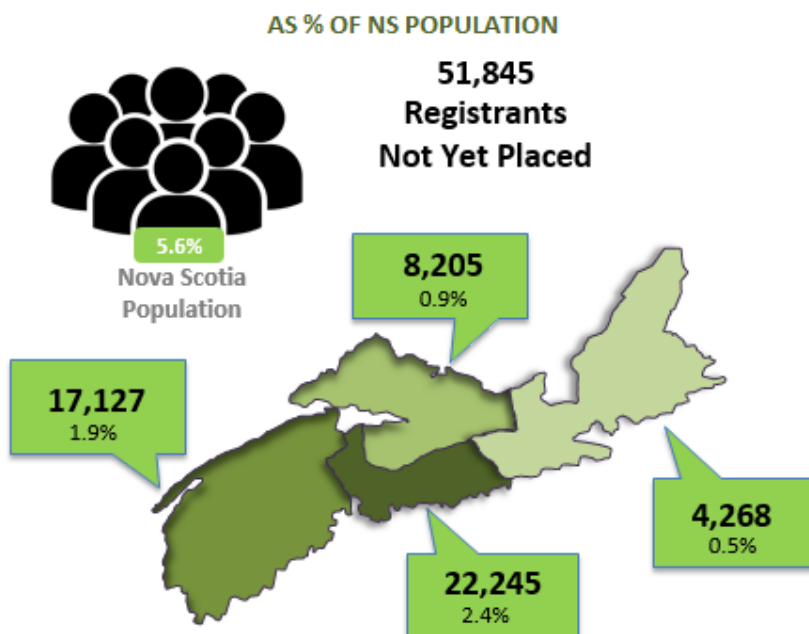


Table 2 gives a detailed geographical breakdown of the volume of registrants not yet placed by zone, network, and cluster and as a percent of the corresponding Nova Scotia population by zone, network, and cluster.

Table 2: Total Volumes Not Yet Placed by Zone, Network, and Cluster and as Percent of Population by Zone, Network, and Cluster

| Total Zone, Network, and Cluster Volumes – Not Yet Placed – February 1, 2019 Report | | | |
|---|------------------------|---|--|
| Zone/Network/Cluster | Total # Not Yet Placed | Population by Zone, Network, Cluster (2011) | % of Population by Zone, Network, Cluster (2011) |
| Central | 22,245 | 409,706 | 5.4% |
| Bedford / Sackville | 4,238 | 87,838 | 4.8% |
| Bedford / Hammonds Plains | 1,943 | 30,109 | 6.5% |
| Fall River / Waverley | 488 | 13,994 | 3.5% |
| Sackville North / Beaverbank / Mount Uniacke | 966 | 22,356 | 4.3% |

| Total Zone, Network, and Cluster Volumes – Not Yet Placed – February 1, 2019 Report | | | |
|---|------------------------|---|--|
| Zone/Network/Cluster | Total # Not Yet Placed | Population by Zone, Network, Cluster (2011) | % of Population by Zone, Network, Cluster (2011) |
| Sackville South | 841 | 21,379 | 3.9% |
| Dartmouth / Southeastern | 6,660 | 115,427 | 5.8% |
| Cole Harbour / Eastern Passage | 2,050 | 36,902 | 5.6% |
| Dartmouth East | 1,155 | 23,616 | 4.9% |
| Dartmouth North | 1,341 | 19,238 | 7.0% |
| Dartmouth South | 1,746 | 24,719 | 7.1% |
| Preston / Lawrencetown / Lake Echo | 368 | 10,952 | 3.4% |
| Eastern Shore Musquodoboit | 590 | 18,165 | 3.2% |
| Eastern Shore Musquodoboit | 590 | 18,165 | 3.2% |
| Halifax Peninsula / Chebucto | 10,359 | 167,379 | 6.2% |
| Armdale / Spryfield / Herring Cove | 1,348 | 23,502 | 5.7% |
| Clayton Park | 3,164 | 34,439 | 9.2% |
| Fairview | 1,154 | 15,789 | 7.3% |
| Halifax Chebucto | 1,323 | 18,764 | 7.1% |
| Halifax Citadel | 1,530 | 20,055 | 7.6% |
| Halifax Needham | 1,126 | 20,192 | 5.6% |
| Sambro Loop Area | 354 | 13,408 | 2.6% |
| Tantallon / Timberlea / St.Margaret's Bay | 360 | 21,230 | 1.7% |
| West Hants | 398 | 20,897 | 1.9% |
| West Hants | 398 | 20,897 | 1.9% |
| Eastern | 4,268 | 163,450 | 2.6% |
| Antigonish and Guysborough | 330 | 27,548 | 1.2% |
| Antigonish | 309 | 19,583 | 1.6% |
| Guysborough / Canso | 14 | 5,122 | 0.3% |
| Sherbrooke | 7 | 2,843 | 0.2% |
| Cape Breton County | 3,240 | 102,397 | 3.2% |
| Dominion / Glace Bay | 899 | 21,782 | 4.1% |
| Florence / Sydney Mines / North Sydney | 718 | 19,870 | 3.6% |
| New Waterford | 601 | 9,757 | 6.2% |
| Sydney | 1,022 | 50,988 | 2.0% |
| Inverness / Victoria / Richmond | 698 | 33,505 | 2.1% |
| Baddeck / Whycomomagh | 117 | 5,382 | 2.2% |
| Cheticamp | <5 | 4,688 | 0.1% |
| Inverness | 42 | 4,667 | 0.9% |
| Port Hawkesbury / Isle Madame / L'Ardoise | 530 | 16,035 | 3.3% |
| Dingwall | 5 | 2,733 | 0.2% |
| Northern | 8,205 | 150,409 | 5.5% |

| | | | |
|--------------------------------------|---------------|----------------|--------------|
| Colchester East Hants | 4,357 | 69,991 | 6.2% |
| East Hants Corridor | 657 | 12,860 | 5.1% |
| Economy / Glenholme | 166 | 5,078 | 3.3% |
| Hants North | 131 | 6,613 | 2.0% |
| South Colchester | 250 | 10,001 | 2.5% |
| Truro and Area | 3,153 | 35,439 | 8.9% |
| Cumberland | 1,058 | 34,750 | 3.0% |
| Amherst | 327 | 14,819 | 2.2% |
| North Cumberland / North Shore | 573 | 8,395 | 6.8% |
| South Cumberland | 67 | 4,311 | 1.6% |
| Springhill | 91 | 7,225 | 1.3% |
| Pictou County | 2,790 | 45,668 | 6.1% |
| New Glasgow / Westville / Stellarton | 2,170 | 34,916 | 6.2% |
| Pictou West | 620 | 10,752 | 5.8% |
| Western | 17,127 | 196,284 | 8.7% |
| Annapolis and Kings | 8,373 | 78,507 | 10.7% |
| Annapolis Royal | 713 | 6,026 | 11.8% |
| Berwick | 2,265 | 13,161 | 17.2% |
| Kentville | 1,525 | 24,944 | 6.1% |
| Middleton | 3,379 | 21,022 | 16.1% |
| Wolfville | 491 | 13,354 | 3.7% |
| Queens and Lunenburg | 5,354 | 59,384 | 9.0% |
| Bridgewater | 2,729 | 28,417 | 9.6% |
| Chester | 864 | 12,271 | 7.0% |
| Liverpool | 950 | 10,908 | 8.7% |
| Lunenburg / Mahone Bay | 811 | 7,788 | 10.4% |
| Yarmouth / Shelburne / Digby | 3,400 | 58,393 | 5.8% |
| Digby / Clare / Weymouth | 2,216 | 18,899 | 11.7% |
| Shelburne / Lockeport | 378 | 14,506 | 2.6% |
| Yarmouth | 806 | 24,988 | 3.2% |
| Total # Not Yet Placed | 51,845 | 919,849 | 5.6% |