

# Finding a Primary Care Provider

in Nova Scotia – February 2021

As of Feb 1, 2021

**55,859**

**Nova Scotians**

are on the Need a Family Practice Registry

This represents

**5.7%**

**of the population**



Annual Population Estimates, Oct 1, 2020  
Statistics Canada

Approximately

**3,300** people

found a family doctor or nurse practitioner each month in the past year

## Monthly activity

As reported in Jan 2021

**2,950** people

found a family practice

In Jan 2021

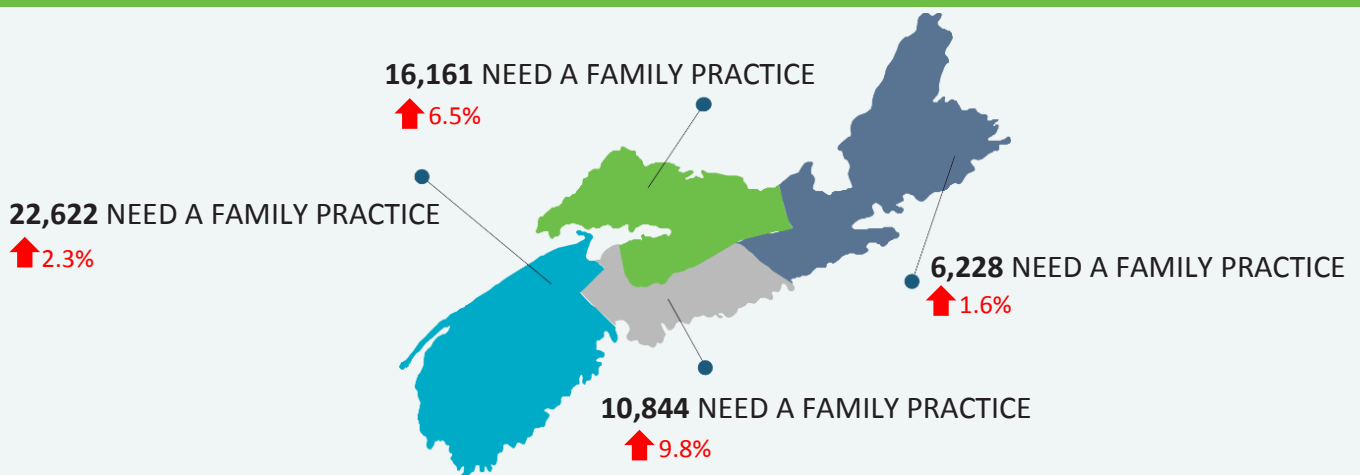
**3,751** people

added their names to the registry

Number of people on the Need a Family Practice Registry Mar 2020 – Feb 2021



## Total number of Nova Scotians by area and percentage change



Total volumes and percent of the population not yet placed by zone, network and cluster

Zone/Network/Cluster	Total # Not yet placed	Difference vs previous month		Population (2016)	% of Population (2016)
<b>Central</b>	<b>10,844</b>	<b>↑</b>	<b>967</b>	<b>423,498</b>	<b>2.6%</b>
<b>Bedford / Sackville</b>	<b>2,314</b>	<b>↑</b>	<b>121</b>	<b>99,581</b>	<b>2.3%</b>
Bedford / Hammonds Plains	1,347	↑	47	40,679	3.3%
Fall River and Area	287	↑	4	15,424	1.9%
Sackville North and Area	373	↑	38	22,325	1.7%
Sackville South	307	↑	32	21,153	1.5%
<b>Dartmouth / Southeastern</b>	<b>1,824</b>	<b>↑</b>	<b>152</b>	<b>116,491</b>	<b>1.6%</b>
Cole Harbour / Eastern Passage	470	↑	54	35,355	1.3%
Dartmouth East	291	↑	19	23,264	1.3%
Dartmouth North	385	↑	14	19,833	1.9%
Dartmouth South	516	↑	54	27,284	1.9%
Preston/Lawrencetown/Lake Echo	162	↑	11	10,755	1.5%
<b>Eastern Shore Musquodoboit</b>	<b>542</b>	<b>↑</b>	<b>34</b>	<b>17,474</b>	<b>3.1%</b>
Eastern Shore / Musquodoboit	542	↑	34	17,474	3.1%
<b>Halifax Peninsula / Chebucto</b>	<b>5,029</b>	<b>↑</b>	<b>507</b>	<b>169,768</b>	<b>3.0%</b>
Armdale / Spryfield / Herring Cove	789	↑	22	25,640	3.1%
Clayton Park	915	↑	91	34,194	2.7%
Fairview	552	↑	60	17,104	3.2%
Halifax Chebucto	515	↑	54	18,939	2.7%
Halifax Citadel	940	↑	128	22,106	4.3%
Halifax Needham	581	↑	103	19,426	3.0%
Sambro Rural Loop	412	↑	4	12,660	3.3%
Tantallon / Timberlea / SMB	325	↑	45	19,699	1.6%
<b>West Hants</b>	<b>1,135</b>	<b>↑</b>	<b>153</b>	<b>20,184</b>	<b>5.6%</b>
West Hants	1,135	↑	153	20,184	5.6%
<b>Eastern</b>	<b>6,228</b>	<b>↑</b>	<b>97</b>	<b>158,936</b>	<b>3.9%</b>
<b>Antigonish and Guysborough</b>	<b>399</b>	<b>↑</b>	<b>23</b>	<b>26,926</b>	<b>1.5%</b>
Antigonish	369	↑	14	19,301	1.9%
Guysborough / Canso	25	↑	11	5,039	0.5%
Sherbrooke	5	↓	2	2,586	0.2%
<b>Cape Breton County</b>	<b>5,489</b>	<b>↑</b>	<b>56</b>	<b>99,590</b>	<b>5.5%</b>
Dominion / Glace Bay	314	↓	56	20,713	1.5%
Florence / Sydney Mines / North Sydney	752	↑	12	19,679	3.8%
New Waterford	653	↑	13	9,454	6.9%
Sydney and Area	3,770	↑	87	49,744	7.6%
<b>Inverness / Victoria / Richmond</b>	<b>340</b>	<b>↑</b>	<b>18</b>	<b>32,420</b>	<b>1.0%</b>
Baddeck / Whycomagh	3		-	3,654	0.1%

Zone/Network/Cluster	Total # Not yet placed	Difference vs previous month		Population (2016)	% of Population (2016)
Cheticamp	3	↑	2	3,903	0.1%
Dingwall	4	↑	3	2,567	0.2%
Inverness	33	↑	15	6,932	0.5%
Port Hawkesbury / L'Ardoise / Isle Madame	297	↓	2	15,364	1.9%
<b>Northern</b>	<b>16,161</b>	<b>↑</b>	<b>980</b>	<b>147,500</b>	<b>11.0%</b>
<b>Colchester East Hants</b>	<b>9,158</b>	<b>↑</b>	<b>262</b>	<b>70,658</b>	<b>13.0%</b>
East Hants Corridor	1,259	↑	23	12,674	9.9%
Economy / Glenholme	718	↑	21	5,277	13.6%
Hants North	559	↑	24	6,945	8.0%
South Colchester	817	↑	32	10,792	7.6%
Truro and Area	5,805	↑	162	34,971	16.6%
<b>Cumberland</b>	<b>2,062</b>	<b>↑</b>	<b>40</b>	<b>33,094</b>	<b>6.2%</b>
Amherst	806	↓	18	13,143	6.1%
Cumberland North / North Shore	1,100	↑	23	8,665	12.7%
South Cumberland	43	↑	2	3,864	1.1%
Springhill	113	↑	33	7,422	1.5%
<b>Pictou County</b>	<b>4,941</b>	<b>↑</b>	<b>678</b>	<b>43,748</b>	<b>11.3%</b>
New Glasgow / Westville / Stellarton	4,311	↑	535	33,561	12.8%
Pictou West	630	↑	143	10,187	6.2%
<b>Western</b>	<b>22,622</b>	<b>↑</b>	<b>508</b>	<b>193,664</b>	<b>11.7%</b>
<b>Annapolis and Kings</b>	<b>10,424</b>	<b>↑</b>	<b>353</b>	<b>78,793</b>	<b>13.2%</b>
Annapolis Royal	416	↑	22	6,056	6.9%
Berwick	1,822	↑	37	13,764	13.2%
Kentville	2,098	↑	72	23,893	8.8%
Middleton	5,086	↑	152	20,910	24.3%
Wolfville	1,002	↑	70	14,170	7.1%
<b>Queens and Lunenburg</b>	<b>4,473</b>	<b>↓</b>	<b>45</b>	<b>57,933</b>	<b>7.7%</b>
Bridgewater	2,323	↑	37	26,711	8.7%
Chester and Area	684	↓	23	11,778	5.8%
Liverpool	900	↓	35	10,351	8.7%
Lunenburg / Mahone Bay	566	↓	24	9,093	6.2%
<b>Yarmouth / Shelburne / Digby</b>	<b>7,725</b>	<b>↑</b>	<b>200</b>	<b>56,938</b>	<b>13.6%</b>
Digby / Clare / Weymouth	2,594	↑	41	18,553	14.0%
Shelburne / Lockeport	1,483	↑	110	13,966	10.6%
Yarmouth	3,648	↑	49	24,419	14.9%
<b>Unknown</b>	<b>4</b>	<b>↑</b>	<b>4</b>	<b>-</b>	<b>0.0%</b>