

# FINDING A PRIMARY CARE PROVIDER IN NOVA SCOTIA

July 2019 Report

Prepared for: Public



Reporting Cycle: Monthly

# INTRODUCTION

## Background

Nova Scotia Health Authority's Need a Family Practice (NAFP) registry was launched on November 1, 2016. The registry provides a coordinated and consistent provincial approach for tracking Nova Scotians who self-identify as not having access to a primary care provider (family physician or nurse practitioner).

People can register themselves and their family members on the NAFP registry online or by telephone to be contacted by a participating practice/provider that is accepting new patients. There are two main ways that contribute to how we report the number of people who have found a primary care provider in Nova Scotia: (1) Through names that are on the NAFP Registry and; (2) names that are not on the NAFP Registry and are sent to NSHA through other routes.

 <b>1. NSHA's Need a Family Practice Registry</b>	 <b>2. Other Routes</b>
People can register themselves and their family members on the Need a Family Practice (NAFP) Registry online or by telephone to be contacted by a participating practice/provider that is accepting new patients.	People can find a primary care provider in other ways, such as with local family practices, through a family member who is an existing patient of a practice, or through a referral by another provider. Information on the number of patients accepted by family doctors who received the patient attachment incentive since April 2018 is also included in the 'Other Routes' category.

The term '**Found a Provider**' is used throughout the report to depict the approximate number of people in Nova Scotia who have found a primary care provider and were registered on the NAFP registry and through other routes as tracked by NSHA since November 2016. The term '**Not Yet Placed**' is used to depict the number of NAFP registrants who are seeking a primary care provider and have added their names to the NAFP registry.

The report highlights the overall volume of people who have found a provider and who are not yet placed by geography (zone, network, and cluster), as well as by month, with data as of **June 25, 2019**.

## Report Format

This report is divided into the following sections:

1. Total Provincial Volumes
2. Monthly Activity
3. Total Zonal Volumes – Found a Provider
4. Total Zonal Volumes – Not Yet Placed

# 1 | TOTAL PROVINCIAL VOLUMES



## Total Provincial Volumes – Found a Primary Care Provider

- Over the month of June, 5,176 people found a primary care provider.
- The overall number of people in Nova Scotia who have found a primary care provider (NAFP registry and other routes) as tracked by NSHA since November 2016 is 97,461.



## Total Provincial Volumes – Not Yet Placed

- As of the July 1, 2019 report, there were 52,086 registrants not yet placed with a family practice, which accounts for 5.6% of the total population in Nova Scotia (based on 2011 census data).
- This represents a 0.3% decrease from the June 1, 2019 report where 52,253 registrants were not yet placed.

Figure 1 identifies the number of people in Nova Scotia who have found a primary care provider who were on the NAFP registry or identified through other routes as tracked by NSHA since November 2016.

**Figure 1: Total Provincial Volumes - Found a Primary Care Provider by Month**

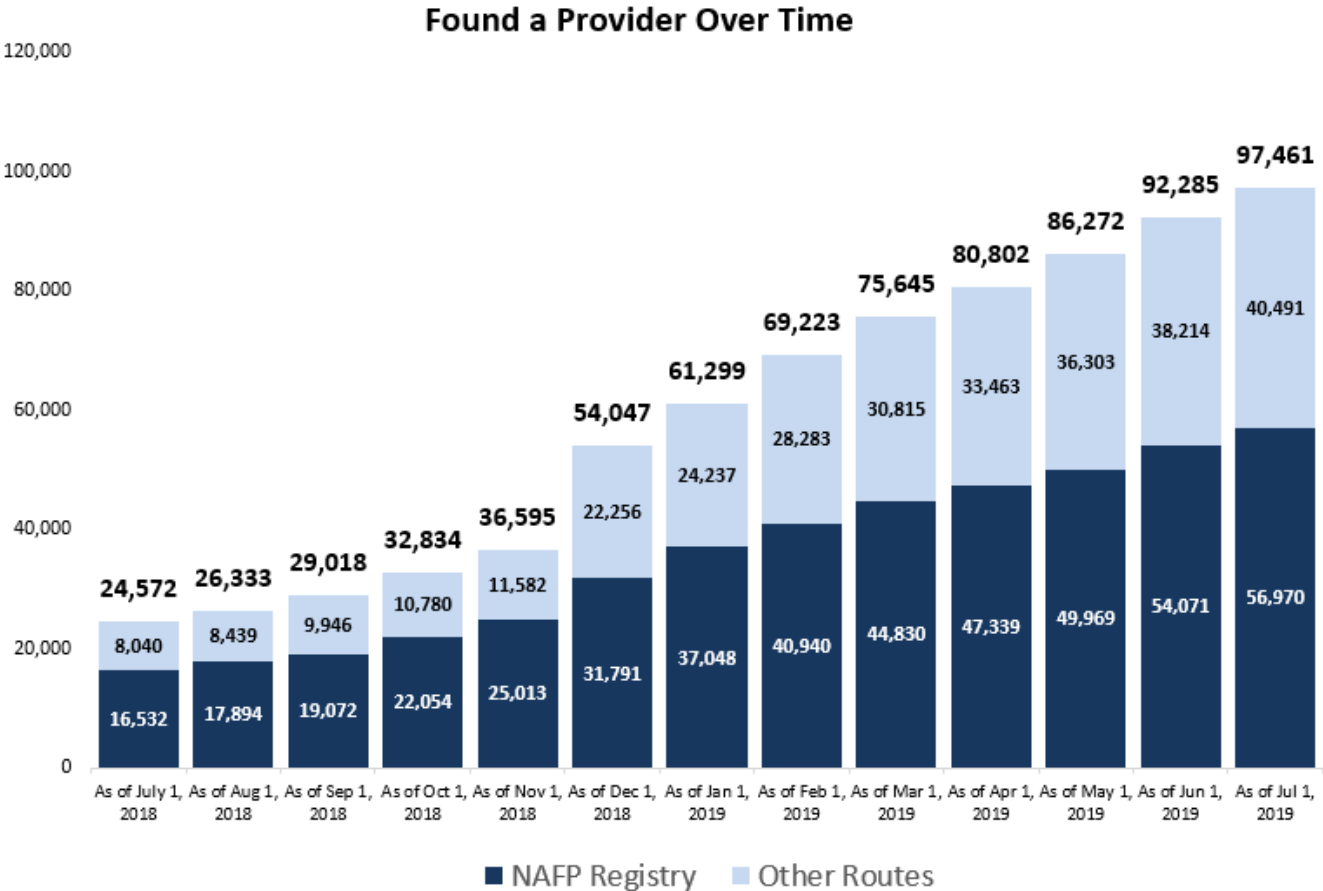
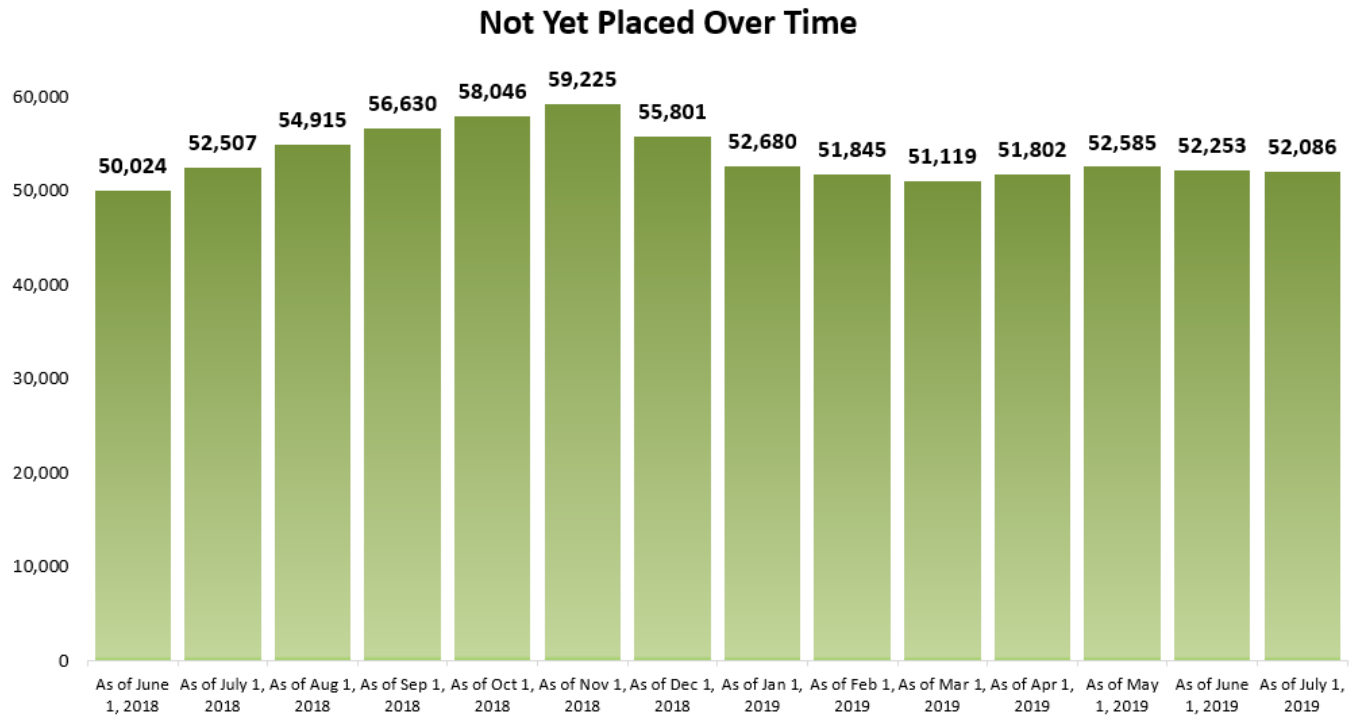


Figure 2 depicts the total number of registrants, by month, on the Need a Family Practice registry that are not yet placed with a family practice.

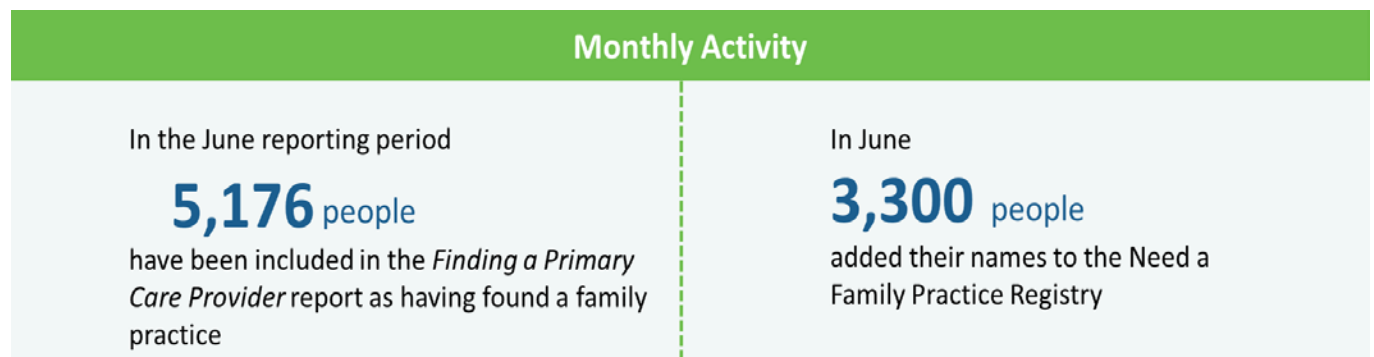
**Figure 2: Total Provincial Volumes - Not Yet Placed by Month**



## 2 | MONTHLY ACTIVITY

During the month of June, 5,176 people found a family doctor or nurse practitioner, and 3,300 people added their names to the Need a Family Practice registry as of July 1. Figure 3 highlights the overall monthly activity during the month of June 2019.


**Figure 3: Provincial Volumes - Monthly Activity**



## Monthly Activity by Zone

Figure 4 provides a summary of the monthly activity that occurred between the June 1 report and the July 1 report.

**Figure 4: Total Zonal Monthly Activity**



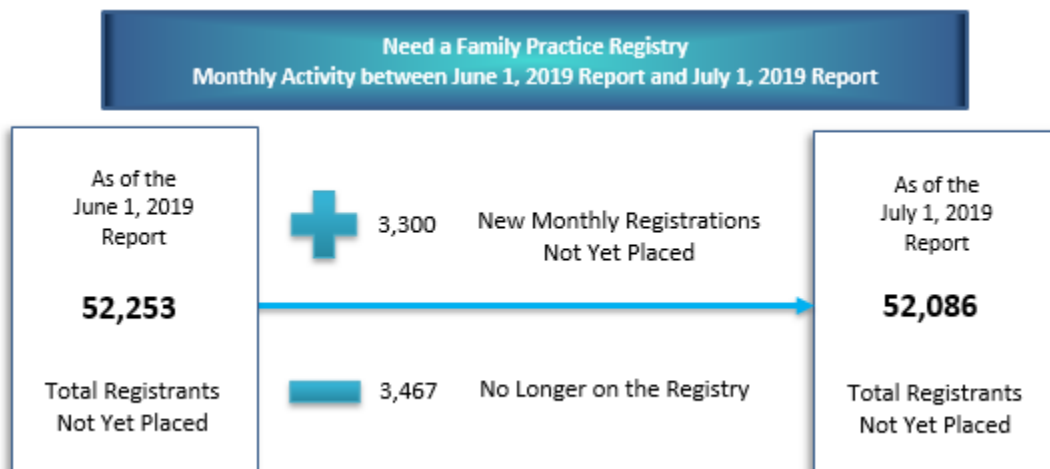
		Jun 1, 2019	Jul 1, 2019	% Change	Jul 1, 2019	Jul 1, 2019
<b>Central Zone</b>	Bedford /Sackville, Dartmouth / Southeastern, Eastern Shore Musquodoboit, Halifax Peninsula / Chebucto, and West Hants	18,186	16,862	-7.3%	4.1%	48,373
<b>Eastern Zone</b>	Antigonish and Guysborough, Cape Breton County, and Inverness / Victoria / Richmond	4,069	4,098	0.7%	2.5%	18,586
<b>Northern Zone</b>	Colchester, Cumberland, and Pictou County	10,781	11,733	8.8%	7.8%	12,720
<b>Western Zone</b>	Annapolis and Kings, Queens and Lunenburg and Yarmouth / Shelburne / Digby	19,213	19,385	0.9%	9.9%	17,598
<b>Unknown Geography</b>	Unknown Geography	4	8	-	-	184
<b>NOVA SCOTIA</b>	<b>TOTAL ACROSS NOVA SCOTIA</b>	<b>52,253</b>	<b>52,086</b>	<b>-0.3%</b>	<b>5.6%</b>	<b>97,461</b>

\*Not yet placed percent of the population relative to the geography's population (i.e., zone)

## Monthly Registry Activity

Specific to the NAFP registry during the month of June, 3,300 new registrations occurred (people who need a family practice) and 3,467 registrants were removed from the registry. People are removed from the registry because they were assisted with finding a family practice or for other reasons, such as already having found a provider when contacted by NSHA or having a duplicate registration. Figure 5 highlights the overall activity in the NAFP registry during the month of June 2019.

**Figure 5: Monthly NAFP Registry Activity**

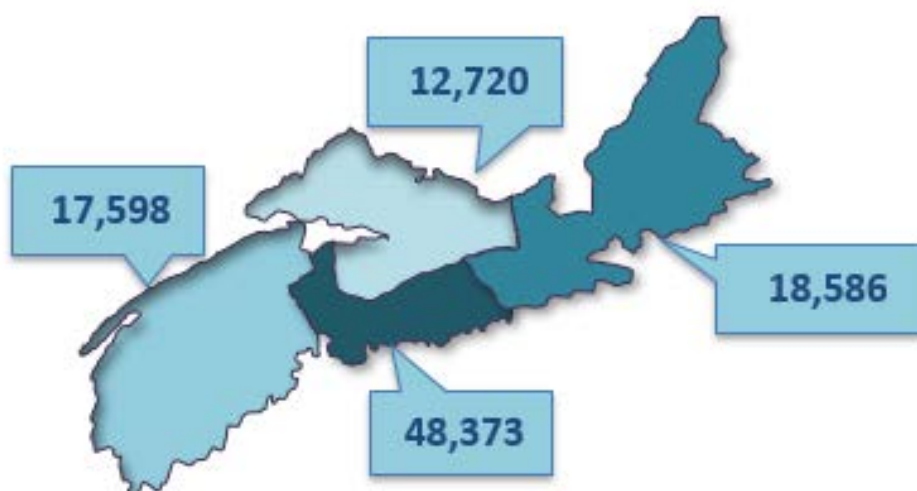


The registry is dynamic, with registrants being added and removed each day. Figure 5 is a simplified graphic that compares two snapshots, one month apart. It depicts the change in the registry total, showing the number of those who have newly registered in the past month, minus the number of people who were no longer on the registry, which is a total of the number of registrants who found a provider and those who have been removed from the registry for other reasons.

### 3 | TOTAL ZONAL VOLUMES: FOUND A PRIMARY CARE PROVIDER

As of July 1, 97,461 Nova Scotians have found a primary care provider who were registered on the NAFP registry or identified through other routes as tracked by NSHA, since November 2016. Figure 6 depicts the breakdown of individuals, by zone, that have found a provider.

**Figure 6:** Total Zonal Volumes - Found a Primary Care Provider



\*Note: 184 have an unknown zone

Table 1 provides the geographic breakdown of the number of people by zone, network, and cluster that found a primary care provider as reported through the NAFP registry or other routes tracked by NSHA, since November 2016.

**Table 1:** Total Zone, Network, and Cluster Volumes - Found a Primary Care Provider – July 1, 2019 Report

Total Zone, Network, and Cluster Volumes - Found a Primary Care Provider – July 1, 2019 Report	
Zone/Network/Cluster	Total # Found a Provider
<b>Central</b>	<b>48,373</b>
<b>Bedford / Sackville</b>	<b>7,393</b>
Bedford / Hammonds Plains	3,415
Fall River / Waverley	857
Sackville North / Beaverbank / Mount Uniacke	1,625
Sackville South	1,496
<b>Dartmouth / Southeastern</b>	<b>14,140</b>
Cole Harbour / Eastern Passage	3,447
Dartmouth East	3,934

<b>Total Zone, Network, and Cluster Volumes - Found a Primary Care Provider – July 1, 2019 Report</b>	
<b>Zone/Network/Cluster</b>	<b>Total # Found a Provider</b>
Dartmouth North	2,584
Dartmouth South	3,174
Preston / Lawrencetown / Lake Echo	1,001
<b>Eastern Shore Musquodoboit</b>	<b>2,397</b>
Eastern Shore Musquodoboit	2,397
<b>Halifax Peninsula / Chebucto</b>	<b>17,986</b>
Armdale / Spryfield / Herring Cove	2,599
Clayton Park	3,940
Fairview	2,073
Halifax Chebucto	2,035
Halifax Citadel	2,030
Halifax Needham	2,236
Sambro Loop Area	960
Tantallon / Timberlea / St.Margaret's Bay	2,113
<b>West Hants</b>	<b>6,457</b>
West Hants	6,457
<b>Eastern</b>	<b>18,586</b>
<b>Antigonish and Guysborough</b>	<b>790</b>
Antigonish	643
Guysborough / Canso	103
Sherbrooke	44
<b>Cape Breton County</b>	<b>13,195</b>
Dominion / Glace Bay	2,408
Florence / Sydney Mines / North Sydney	2,488
New Waterford	1,711
Sydney	6,588
<b>Inverness / Victoria / Richmond</b>	<b>4,601</b>
Baddeck / Whycocomagh	1,956
Cheticamp	577
Dingwall	36
Inverness	292
Port Hawkesbury / Isle Madame / L'Ardoise	1,740
<b>Northern</b>	<b>12,720</b>
<b>Colchester East Hants</b>	<b>6,812</b>
East Hants Corridor	371
Economy / Glenholme	125
Hants North	461
South Colchester	314
Truro and Area	5,541
<b>Cumberland</b>	<b>1,901</b>
Amherst	300
North Cumberland / North Shore	703
South Cumberland	204

<b>Total Zone, Network, and Cluster Volumes - Found a Primary Care Provider – July 1, 2019 Report</b>	
<b>Zone/Network/Cluster</b>	<b>Total # Found a Provider</b>
Springhill	694
<b>Pictou County</b>	<b>4,007</b>
New Glasgow / Westville / Stellarton	2,377
Pictou West	1,630
<b>Western</b>	<b>17,598</b>
<b>Annapolis and Kings</b>	<b>7,611</b>
Annapolis Royal	217
Berwick	886
Kentville	3,098
Middleton	2,251
Wolfville	1,159
<b>Queens and Lunenburg</b>	<b>5,642</b>
Bridgewater	2,061
Chester	1,364
Liverpool	1,567
Lunenburg / Mahone Bay	650
<b>Yarmouth / Shelburne / Digby</b>	<b>4,345</b>
Digby / Clare / Weymouth	1,415
Shelburne / Lockeport	1,183
Yarmouth	1,747
<b>Unknown</b>	<b>184</b>
<b>Total Found a Provider</b>	<b>97,461</b>



## 4 | TOTAL ZONAL VOLUMES – NOT YET PLACED

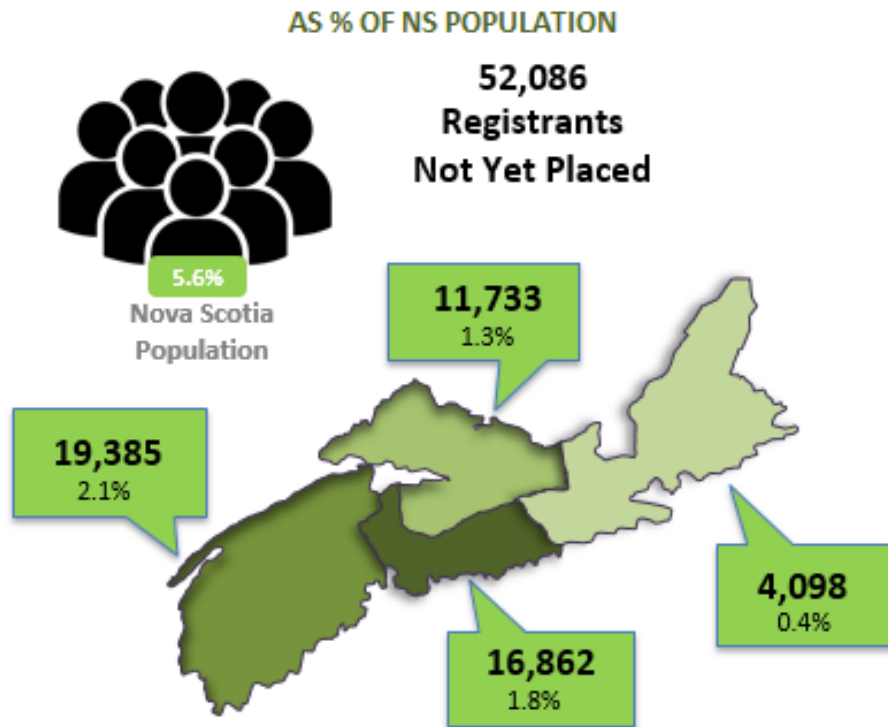
There are 52,086 registrants not yet placed with a family practice as of the July 1 report. The total volumes by zone\* are:

- Central Zone: 16,862 registrations
- Eastern Zone: 4,098 registrations
- Northern Zone: 11,733 registrations
- Western Zone: 19,385 registrations

\*Note: 8 have an unknown zone

Figure 7 gives a high-level overview of the volume of NAFP registrants who are not yet placed, by zone, as a percent of the total Nova Scotia population based on 2011 census counts.

**Figure 7: Total Zonal Volumes - Not Yet Placed as a Percent of the Total Nova Scotia Population**



\*Note: 8 have an unknown zone

Table 2 gives a detailed geographical breakdown of the volume of registrants not yet placed by zone, network, and cluster and as a percent of the corresponding Nova Scotia population by zone, network, and cluster.

**Table 2: Total Volumes Not Yet Placed by Zone, Network, and Cluster and as Percent of Population by Zone, Network, and Cluster**

Total Zone, Network, and Cluster Volumes – Not Yet Placed – July 1, 2019 Report			
Zone/Network/Cluster	Total # Not Yet Placed	Population by Zone, Network, Cluster (2011)	% of Population by Zone, Network, Cluster (2011)
Central	16,862	409,706	4.1%
<b>Bedford / Sackville</b>	<b>3,106</b>	<b>87,838</b>	<b>3.5%</b>

Total Zone, Network, and Cluster Volumes – Not Yet Placed – July 1, 2019 Report			
Zone/Network/Cluster	Total # Not Yet Placed	Population by Zone, Network, Cluster (2011)	% of Population by Zone, Network, Cluster (2011)
Bedford / Hammonds Plains	1,351	30,109	4.5%
Fall River / Waverley	373	13,994	2.7%
Sackville North / Beaverbank / Mount Uniacke	768	22,356	3.4%
Sackville South	614	21,379	2.9%
<b>Dartmouth / Southeastern</b>	<b>4,808</b>	<b>115,427</b>	<b>4.2%</b>
Cole Harbour / Eastern Passage	1,422	36,902	3.9%
Dartmouth East	852	23,616	3.6%
Dartmouth North	1,009	19,238	5.2%
Dartmouth South	1,213	24,719	4.9%
Preston / Lawrencetown / Lake Echo	312	10,952	2.8%
<b>Eastern Shore Musquodoboit</b>	<b>464</b>	<b>18,165</b>	<b>2.6%</b>
Eastern Shore Musquodoboit	464	18,165	2.6%
<b>Halifax Peninsula / Chebucto</b>	<b>7,887</b>	<b>167,379</b>	<b>4.7%</b>
Armdale / Spryfield / Herring Cove	922	23,502	3.9%
Clayton Park	2,283	34,439	6.6%
Fairview	759	15,789	4.8%
Halifax Chebucto	892	18,764	4.8%
Halifax Citadel	1,251	20,055	6.2%
Halifax Needham	1,052	20,192	5.2%
Sambro Loop Area	324	13,408	2.4%
Tantallon / Timberlea / St.Margaret's Bay	404	21,230	1.9%
<b>West Hants</b>	<b>597</b>	<b>20,897</b>	<b>2.9%</b>
West Hants	597	20,897	2.9%
<b>Eastern</b>	<b>4,098</b>	<b>163,450</b>	<b>2.5%</b>
<b>Antigonish and Guysborough</b>	<b>257</b>	<b>27,548</b>	<b>0.9%</b>
Antigonish	222	19,583	1.1%
Guysborough / Canso	28	5,122	0.5%
Sherbrooke	7	2,843	0.2%
<b>Cape Breton County</b>	<b>3,461</b>	<b>102,397</b>	<b>3.4%</b>
Dominion / Glace Bay	711	21,782	3.3%
Florence / Sydney Mines / North Sydney	542	19,870	2.7%
New Waterford	603	9,757	6.2%
Sydney	1,605	50,988	3.1%
<b>Inverness / Victoria / Richmond</b>	<b>380</b>	<b>33,505</b>	<b>1.1%</b>
Baddeck / Whycocomagh	14	5,382	0.3%
Cheticamp	0	4,688	0.0%
Inverness	9	4,667	0.2%

Total Zone, Network, and Cluster Volumes – Not Yet Placed – July 1, 2019 Report			
Zone/Network/Cluster	Total # Not Yet Placed	Population by Zone, Network, Cluster (2011)	% of Population by Zone, Network, Cluster (2011)
Port Hawkesbury / Isle Madame / L'Ardoise	357	16,035	2.2%
Dingwall	0	2,733	0.0%
<b>Northern</b>	<b>11,733</b>	<b>150,409</b>	<b>7.8%</b>
<b>Colchester East Hants</b>	<b>5,850</b>	<b>69,991</b>	<b>8.4%</b>
East Hants Corridor	720	12,860	5.6%
Economy / Glenholme	240	5,078	4.7%
Hants North	512	6,613	7.7%
South Colchester	301	10,001	3.0%
Truro and Area	4,077	35,439	11.5%
<b>Cumberland</b>	<b>1,984</b>	<b>34,750</b>	<b>5.7%</b>
Amherst	1,082	14,819	7.3%
North Cumberland / North Shore	614	8,395	7.3%
South Cumberland	136	4,311	3.2%
Springhill	152	7,225	2.1%
<b>Pictou County</b>	<b>3,899</b>	<b>45,668</b>	<b>8.5%</b>
New Glasgow / Westville / Stellarton	3,197	34,916	9.2%
Pictou West	702	10,752	6.5%
<b>Western</b>	<b>19,385</b>	<b>196,284</b>	<b>9.9%</b>
<b>Annapolis and Kings</b>	<b>9,185</b>	<b>78,507</b>	<b>11.7%</b>
Annapolis Royal	956	6,026	15.9%
Berwick	2,156	13,161	16.4%
Kentville	1,459	24,944	5.8%
Middleton	4,211	21,022	20.0%
Wolfville	403	13,354	3.0%
<b>Queens and Lunenburg</b>	<b>5,404</b>	<b>59,384</b>	<b>9.1%</b>
Bridgewater	2,601	28,417	9.2%
Chester	911	12,271	7.4%
Liverpool	937	10,908	8.6%
Lunenburg / Mahone Bay	955	7,788	12.3%
<b>Yarmouth / Shelburne / Digby</b>	<b>4,796</b>	<b>58,393</b>	<b>8.2%</b>
Digby / Clare / Weymouth	2,382	18,899	12.6%
Shelburne / Lockeport	647	14,506	4.5%
Yarmouth	1,767	24,988	7.1%
<b>Unknown</b>	<b>8</b>	<b>-</b>	<b>0.0%</b>
<b>Total # Not Yet Placed</b>	<b>52,086</b>	<b>919,849</b>	<b>5.6%</b>