

# Finding a Primary Care Provider

## in Nova Scotia - December 2022

As of Dec 1, 2022

### 125,278

**Nova Scotians**

are on the Need a Family Practice Registry

This represents

### 12.6%

of the population



Annual Population Estimates - 2021  
Statistics Canada

Approximately

### 2,900 people

found a family doctor or nurse practitioner each month in the past year

### Monthly Activity

As reported in Nov 2022

### 2,417 people

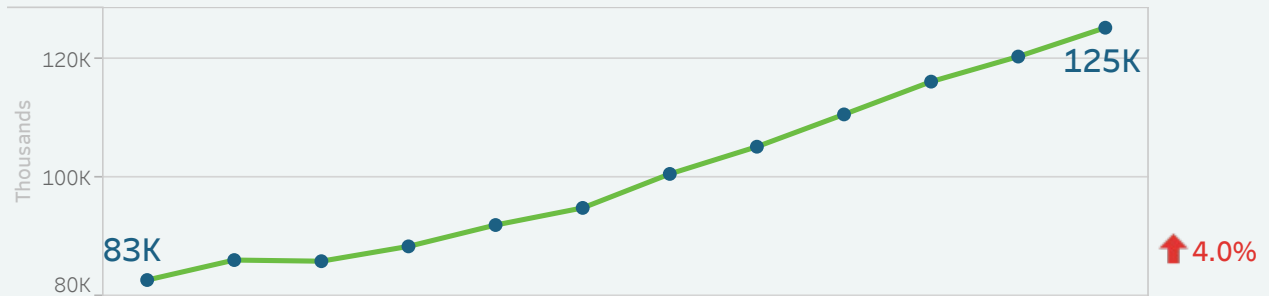
were removed from the registry

In Nov 2022

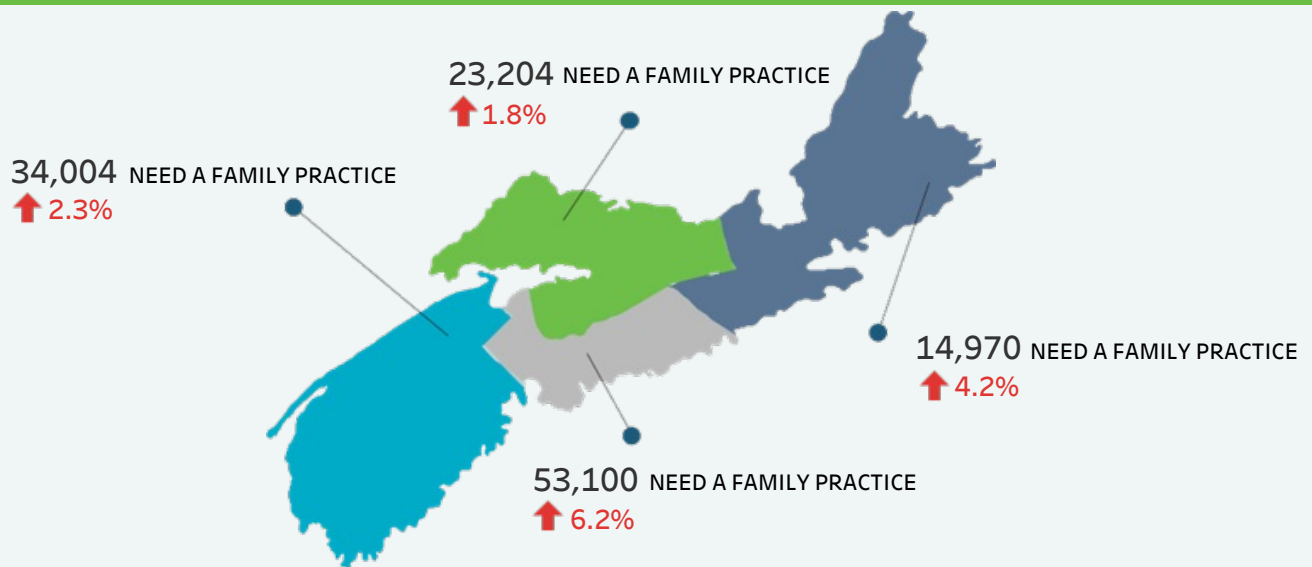
### 7,284 people

added their names to the registry

Number of people on the Need a Family Practice Registry Jan 2022 - Dec 2022



Total number of Nova Scotians by area and percent change

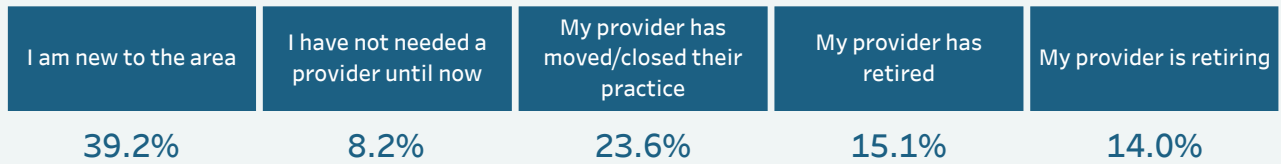


# Reasons for Joining the Need a Family Practice Registry

Nova Scotians are asked to select their reason for joining the Need a Family Practice Registry from a list of options during their registration.

## Monthly Activity

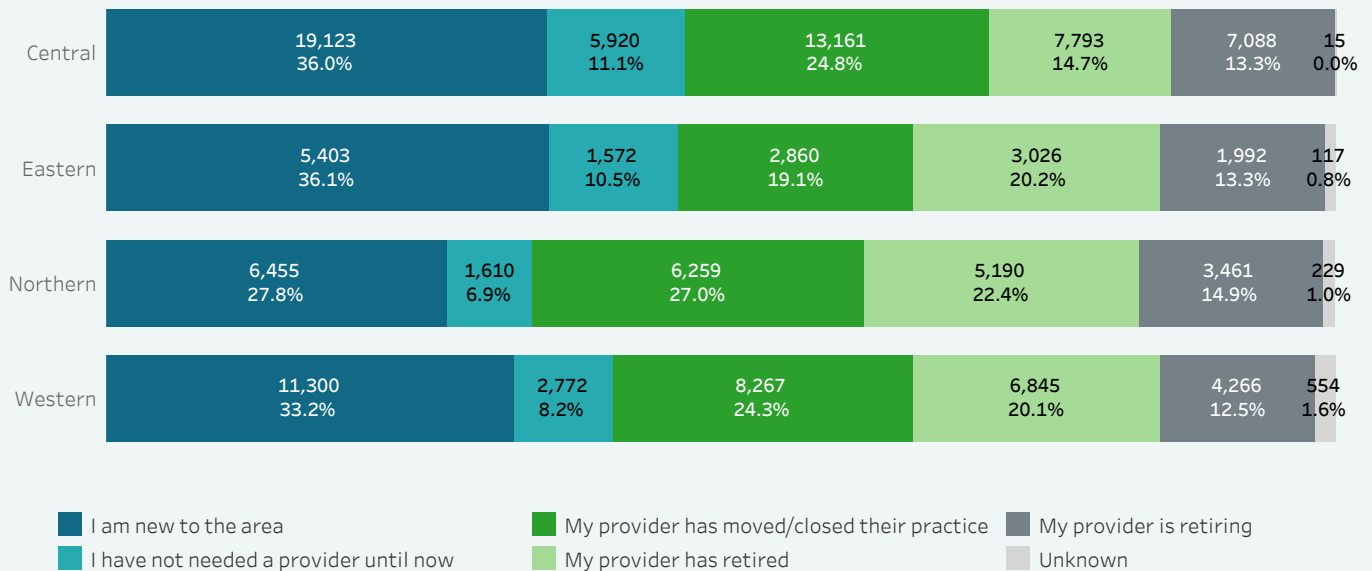
Reasons selected by the 7,284 Nova Scotians who joined the Need a Family Practice Registry in Nov 2022



## Reasons for Joining by Zone - Nov 2022

|   | Central      | Eastern    | Northern   | Western      | Null | Total        |
|---|--------------|------------|------------|--------------|------|--------------|
| I am new to the area                        | 1,623        | 328        | 356        | 546          |      | 2,853        |
| I have not needed a provider until now      | 357          | 65         | 59         | 117          |      | 598          |
| My provider has moved/closed their practice | 1,073        | 72         | 156        | 415          |      | 1,716        |
| My provider has retired                     | 527          | 184        | 193        | 195          |      | 1,099        |
| My provider is retiring                     | 572          | 208        | 146        | 91           |      | 1,017        |
| Unknown                                     |              | 1          |            |              |      | 1            |
| <b>Total</b>                                | <b>4,152</b> | <b>858</b> | <b>910</b> | <b>1,364</b> |      | <b>7,284</b> |

## Total Nova Scotians by Zone and Reason for Joining



# Providing Access to Primary Health Care Services

## Primary Care Clinics

A Primary Care Clinic provides short-term primary medical care for people on the Need a Family Practice Registry. These clinics help to ensure access to care while awaiting a permanent provider. There are currently 19 locations across Nova Scotia providing access to care through the Primary Care Clinic model.

Additional information on Primary Care Clinics can be found at <http://primarycareclinics.ca/>

As of Dec 1, 2022

**83,003**

**Nova Scotians**

on the NAFP Registry are eligible to access care through Primary Care Clinics

## VirtualCareNS

VirtualCareNS is a virtual primary care clinic for people on the Need a Family Practice Registry to access a primary care provider online. The program began as a pilot project in select communities in Northern and Western zones, and is continuing to expand across the rest of the province.

Additional information on VirtualCareNS can be found at <http://www.virtualcareNS.ca>

As of Dec 1, 2022

**100%**

**of Nova Scotians**

on the NAFP Registry have been invited to access care through VirtualCareNS

Approximately

**47,305**

**Nova Scotians**

have registered within the VirtualCareNS Program

For more information on the Need a Family Practice Registry visit <https://needafamilypractice.ca>

## Total volumes and percent of the population not yet placed by zone, network, and cluster

| Zone/Network/Cluster                      | Total # Not yet Placed | Difference vs Previous Month | % Difference vs Previous Month | Population (2021) | % of Population (2021) |
|---|------------------------|------------------------------|--------------------------------|-------------------|------------------------|
| <b>Central</b>                            | 53,100                 | ↑ 3,089                      | 6.2%                           | 480,983           | 11.0%                  |
| <b>Bedford/Sackville</b>                  | 15,626                 | ↑ 933                        | 6.3%                           | 113,772           | 13.7%                  |
| Bedford / Hammonds Plains                 | 6,396                  | ↑ 409                        | 6.8%                           | 46,405            | 13.8%                  |
| Fall River and Area                       | 1,733                  | ↑ 110                        | 6.8%                           | 18,813            | 9.2%                   |
| Sackville North and Area                  | 3,868                  | ↑ 193                        | 5.3%                           | 24,420            | 15.8%                  |
| Sackville South                           | 3,629                  | ↑ 221                        | 6.5%                           | 24,134            | 15.0%                  |
| <b>Dartmouth/Southeastern</b>             | 12,470                 | ↑ 771                        | 6.6%                           | 132,439           | 9.4%                   |
| Cole Harbour / Eastern Passage            | 3,783                  | ↑ 217                        | 6.1%                           | 39,871            | 9.5%                   |
| Dartmouth East                            | 2,211                  | ↑ 94                         | 4.4%                           | 26,542            | 8.3%                   |
| Dartmouth North                           | 2,733                  | ↑ 232                        | 9.3%                           | 22,628            | 12.1%                  |
| Dartmouth South                           | 3,183                  | ↑ 176                        | 5.9%                           | 31,128            | 10.2%                  |
| Preston/Lawrencetown/Lake Echo            | 560                    | ↑ 52                         | 10.2%                          | 12,270            | 4.6%                   |
| <b>Eastern Shore Musquodoboit</b>         | 1,332                  | ↑ 80                         | 6.4%                           | 20,564            | 6.5%                   |
| Eastern Shore / Musquodoboit              | 1,332                  | ↑ 80                         | 6.4%                           | 20,564            | 6.5%                   |
| <b>Halifax Peninsula/Chebucto</b>         | 21,277                 | ↑ 1,314                      | 6.6%                           | 193,692           | 11.0%                  |
| Armdale / Spryfield / Herring Cove        | 2,863                  | ↑ 232                        | 8.8%                           | 29,253            | 9.8%                   |
| Clayton Park                              | 4,449                  | ↑ 395                        | 9.7%                           | 39,013            | 11.4%                  |
| Fairview                                  | 2,438                  | ↑ 225                        | 10.2%                          | 19,514            | 12.5%                  |
| Halifax Chebucto                          | 2,076                  | ↑ 35                         | 1.7%                           | 21,608            | 9.6%                   |
| Halifax Citadel                           | 3,612                  | ↑ 182                        | 5.3%                           | 25,667            | 14.1%                  |
| Halifax Needham                           | 2,826                  | ↑ 146                        | 5.4%                           | 21,718            | 13.0%                  |
| Sambro Rural Loop                         | 1,375                  | ↑ 75                         | 5.8%                           | 14,444            | 9.5%                   |
| Tantallon / Timberlea / SMB               | 1,638                  | ↑ 24                         | 1.5%                           | 22,475            | 7.3%                   |
| <b>West Hants</b>                         | 2,395                  | ↓ -9                         | -0.4%                          | 20,516            | 11.7%                  |
| West Hants                                | 2,395                  | ↓ -9                         | -0.4%                          | 20,516            | 11.7%                  |
| <b>Eastern</b>                            | 14,970                 | ↑ 609                        | 4.2%                           | 159,939           | 9.4%                   |
| <b>Antigonish and Guysborough</b>         | 1,887                  | ↑ 72                         | 4.0%                           | 27,699            | 6.8%                   |
| Antigonish                                | 1,708                  | ↑ 140                        | 8.9%                           | 20,333            | 8.4%                   |
| Guysborough / Canso                       | 162                    | ↓ -73                        | -31.1%                         | 4,838             | 3.3%                   |
| Sherbrooke                                | 17                     | ↑ 5                          | 41.7%                          | 2,528             | 0.7%                   |
| <b>Cape Breton County</b>                 | 11,168                 | ↑ 417                        | 3.9%                           | 98,640            | 11.3%                  |
| Dominion / Glace Bay                      | 1,732                  | ↓ -35                        | -2.0%                          | 20,628            | 8.4%                   |
| Florence / Sydney Mines / North Sydney    | 1,826                  | ↑ 235                        | 14.8%                          | 18,734            | 9.7%                   |
| New Waterford                             | 1,385                  | ↑ 47                         | 3.5%                           | 9,415             | 14.7%                  |
| Sydney and Area                           | 6,225                  | ↑ 170                        | 2.8%                           | 49,863            | 12.5%                  |
| <b>Inverness/Victoria/Richmond</b>        | 1,915                  | ↑ 120                        | 6.7%                           | 33,600            | 5.7%                   |
| Baddeck / Whycocomagh                     | 58                     | ↓ -21                        | -26.6%                         | 4,575             | 1.3%                   |
| Cheticamp                                 | 60                     | ↑ 6                          | 11.1%                          | 3,915             | 1.5%                   |
| Dingwall                                  | 20                     | ↑ 1                          | 5.3%                           | 2,487             | 0.8%                   |
| Inverness                                 | 794                    | ↑ 76                         | 10.6%                          | 7,069             | 11.2%                  |
| Port Hawkesbury / L'Ardoise / Isle Madame | 983                    | ↑ 58                         | 6.3%                           | 15,554            | 6.3%                   |

## Total volumes and percent of the population not yet placed by zone, network, and cluster

| Zone/Network/Cluster                 | Total # Not yet Placed | Difference vs Previous Month | % Difference vs Previous Month | Population (2021) | % of Population (2021) |
|--------------------------------------|------------------------|------------------------------|--------------------------------|-------------------|------------------------|
| <b>Northern</b>                      | 23,204                 | ↑ 418                        | 1.8%                           | 151,084           | 15.4%                  |
| <b>Colchester East Hants</b>         | 9,683                  | ↑ 334                        | 3.6%                           | 73,174            | 13.2%                  |
| East Hants Corridor                  | 1,443                  | ↑ 160                        | 12.5%                          | 12,936            | 11.2%                  |
| Economy / Glenholme                  | 649                    | ↑ 12                         | 1.9%                           | 5,403             | 12.0%                  |
| Hants North                          | 572                    | ↑ 9                          | 1.6%                           | 7,383             | 7.7%                   |
| South Colchester                     | 1,139                  | ↑ 42                         | 3.8%                           | 10,068            | 11.3%                  |
| Truro and Area                       | 5,880                  | ↑ 111                        | 1.9%                           | 37,384            | 15.7%                  |
| <b>Cumberland</b>                    | 2,683                  | ↑ 55                         | 2.1%                           | 33,497            | 8.0%                   |
| Amherst                              | 1,313                  | ↑ 114                        | 9.5%                           | 13,590            | 9.7%                   |
| Cumberland North / North Shore       | 796                    | ↓ -134                       | -14.4%                         | 8,667             | 9.2%                   |
| South Cumberland                     | 208                    | ↑ 29                         | 16.2%                          | 3,549             | 5.9%                   |
| Springhill                           | 366                    | ↑ 46                         | 14.4%                          | 7,691             | 4.8%                   |
| <b>Pictou County</b>                 | 10,838                 | ↑ 29                         | 0.3%                           | 44,413            | 24.4%                  |
| New Glasgow / Westville / Stellarton | 8,612                  | ↓ -4                         | 0.0%                           | 34,083            | 25.3%                  |
| Pictou West                          | 2,226                  | ↑ 33                         | 1.5%                           | 10,330            | 21.5%                  |
| <b>Western</b>                       | 34,004                 | ↑ 754                        | 2.3%                           | 200,049           | 17.0%                  |
| <b>Annapolis and Kings</b>           | 12,120                 | ↑ 271                        | 2.3%                           | 82,835            | 14.6%                  |
| Annapolis Royal                      | 810                    | ↑ 19                         | 2.4%                           | 6,352             | 12.8%                  |
| Berwick                              | 2,039                  | ↑ 40                         | 2.0%                           | 14,405            | 14.2%                  |
| Kentville                            | 2,741                  | ↑ 118                        | 4.5%                           | 25,137            | 10.9%                  |
| Middleton                            | 5,009                  | ↑ 54                         | 1.1%                           | 22,209            | 22.6%                  |
| Wolfville                            | 1,521                  | ↑ 40                         | 2.7%                           | 14,732            | 10.3%                  |
| <b>Queens and Lunenburg</b>          | 9,590                  | ↑ 198                        | 2.1%                           | 59,927            | 16.0%                  |
| Bridgewater                          | 5,131                  | ↑ 108                        | 2.2%                           | 27,829            | 18.4%                  |
| Chester and Area                     | 1,710                  | ↑ 56                         | 3.4%                           | 12,358            | 13.8%                  |
| Liverpool                            | 1,966                  | ↑ 13                         | 0.7%                           | 10,425            | 18.9%                  |
| Lunenburg / Mahone Bay               | 783                    | ↑ 21                         | 2.8%                           | 9,315             | 8.4%                   |
| <b>Yarmouth/Shelburne/Digby</b>      | 12,294                 | ↑ 285                        | 2.4%                           | 57,287            | 21.5%                  |
| Digby / Clare / Weymouth             | 4,176                  | ↑ 86                         | 2.1%                           | 18,751            | 22.3%                  |
| Shelburne / Lockeport                | 1,711                  | ↑ 53                         | 3.2%                           | 13,717            | 12.5%                  |
| Yarmouth                             | 6,407                  | ↑ 146                        | 2.3%                           | 24,819            | 25.8%                  |
| <b>Unknown</b>                       | 0                      | ↓ -1                         | -100.0%                        |                   |                        |