

# FINDING A PRIMARY CARE PROVIDER IN NOVA SCOTIA

October 2019 Report

Prepared for: Decision and Policy Makers - NSHA Primary  
Health Care and the Department of Health and Wellness



Reporting Cycle: Monthly

# INTRODUCTION

## Background

Nova Scotia Health Authority's Need a Family Practice (NAFP) registry was launched on November 1, 2016. The registry provides a coordinated and consistent provincial approach for tracking Nova Scotians who self identify as not having access to a primary care provider (family physician or nurse practitioner).

People can register themselves and their family members on the NAFP registry online or by telephone to be contacted by a participating practice/provider that is accepting new patients. There are two main ways that contribute to how we report the number of people who have found a primary care provider in Nova Scotia: (1) Through names that are on the NAFP Registry and; (2) names that are not on the NAFP Registry and are sent to NSHA through other routes.

 <b>1. NSHA's Need a Family Practice Registry</b>	 <b>2. Other Routes</b>
People can register themselves and their family members on the Need a Family Practice (NAFP) Registry online or by telephone to be contacted by a participating practice/provider that is accepting new patients.	People can find a primary care provider in other ways, such as with local family practices, through a family member who is an existing patient of a practice, or through a referral by another provider. Information on the number of patients accepted by family doctors who received the patient attachment incentive since April 2018 is also included in the 'Other Routes' category.

The term '**Found a Provider**' is used throughout the report to depict the approximate number of people in Nova Scotia who have found a primary care provider and were registered on the NAFP registry and through other routes as tracked by NSHA since November 2016. The term '**Not Yet Placed**' is used to depict the number of NAFP registrants who are seeking a primary care provider and have added their names to the NAFP registry.

The report highlights the overall volume of people who have found a provider and who are not yet placed by geography (zone, network, and cluster), as well as by month, with data as of **September 25, 2019**.

## Report Format

This report is divided into the following sections:

1. Total Provincial Volumes
2. Monthly Activity
3. Total Zonal Volumes – Found a Provider
4. Total Zonal Volumes – Not Yet Placed

# 1 | TOTAL PROVINCIAL VOLUMES



## Total Provincial Volumes – Found a Primary Care Provider

- As reported in the month of September, 5,057 people found a primary care provider.
- The overall number of people in Nova Scotia who have found a primary care provider (NAFP registry and other routes) as tracked by NSHA since November 2016 is 115,436.



## Total Provincial Volumes – Not Yet Placed

- As of the October 1, 2019 report, there were 51,014 registrants not yet placed with a family practice, which accounts for 5.5% of the total population in Nova Scotia (based on 2016 census data).
- This represents a 2.7% decrease from the September 1, 2019 report where 52,430 registrants were not yet placed.

Figure 1 identifies the number of people in Nova Scotia who have found a primary care provider who were on the NAFP registry or identified through other routes as tracked by NSHA since November 2016.

**Figure 1: Total Provincial Volumes - Found a Primary Care Provider by Month**

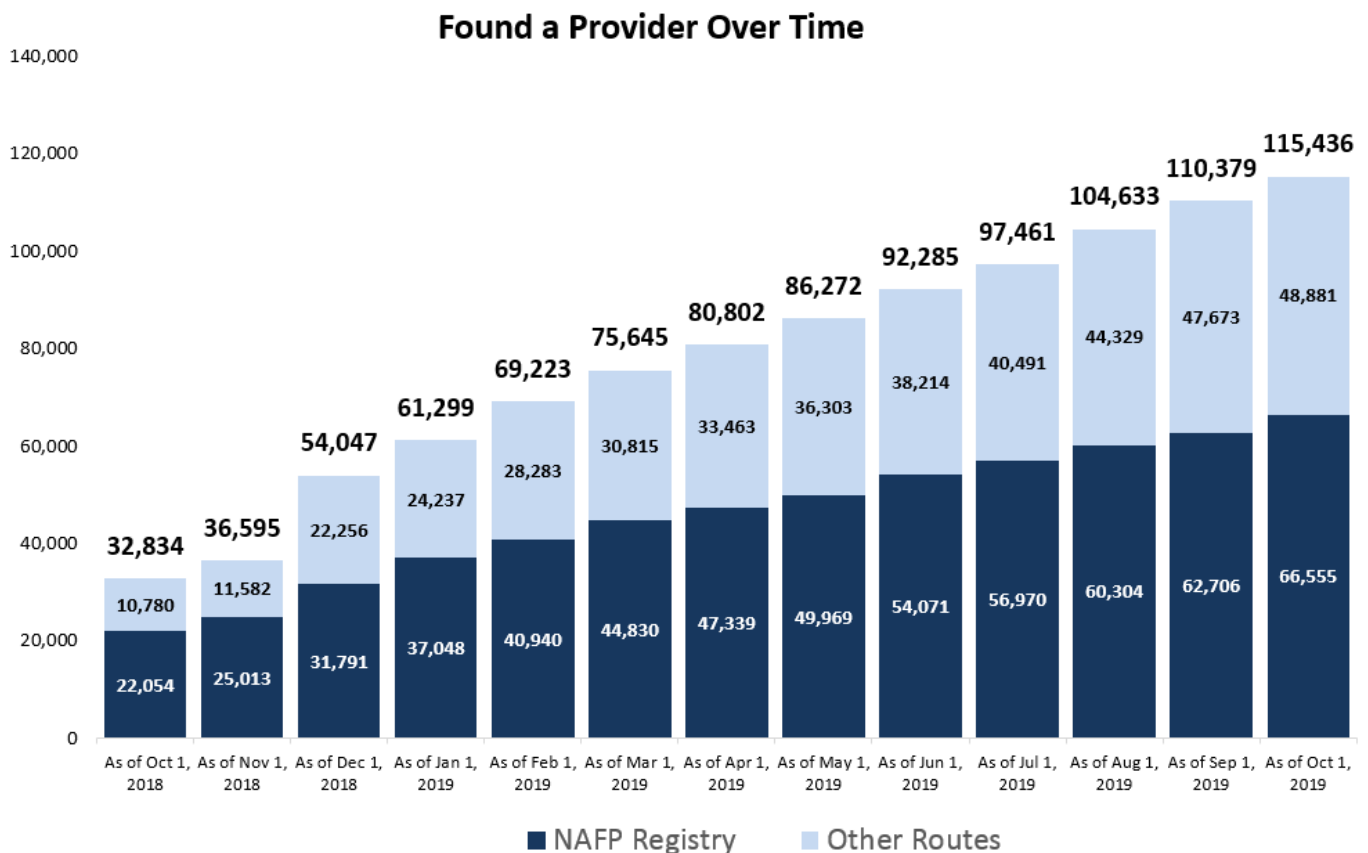
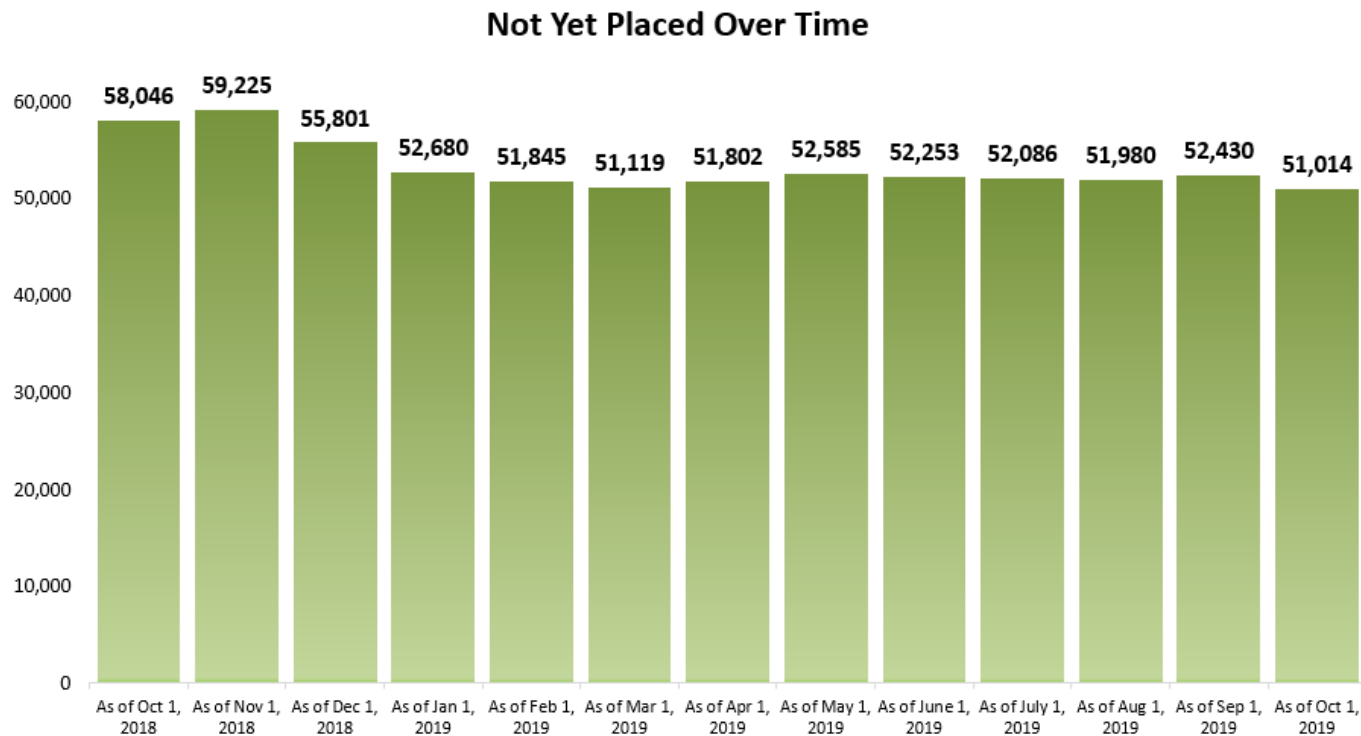


Figure 2 depicts the total number of registrants, by month, on the Need a Family Practice registry that are not yet placed with a family practice.

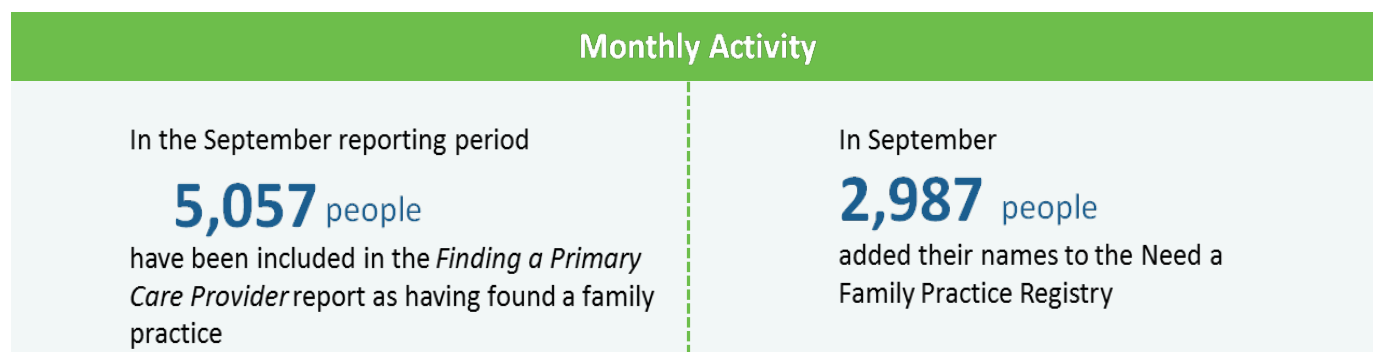
**Figure 2: Total Provincial Volumes - Not Yet Placed by Month**



## 2 | MONTHLY ACTIVITY

During the month of September, 5,057 people found a family doctor or nurse practitioner, and 2,987 people added their names to the Need a Family Practice registry as of October 1. Figure 3 highlights the overall monthly activity during the month of September 2019.


**Figure 3: Provincial Volumes - Monthly Activity**



### Monthly Activity by Zone

Figure 4 provides a summary of the monthly activity that occurred between the September 1 report and the October 1 report.

**Figure 4: Total Zonal Monthly Activity**



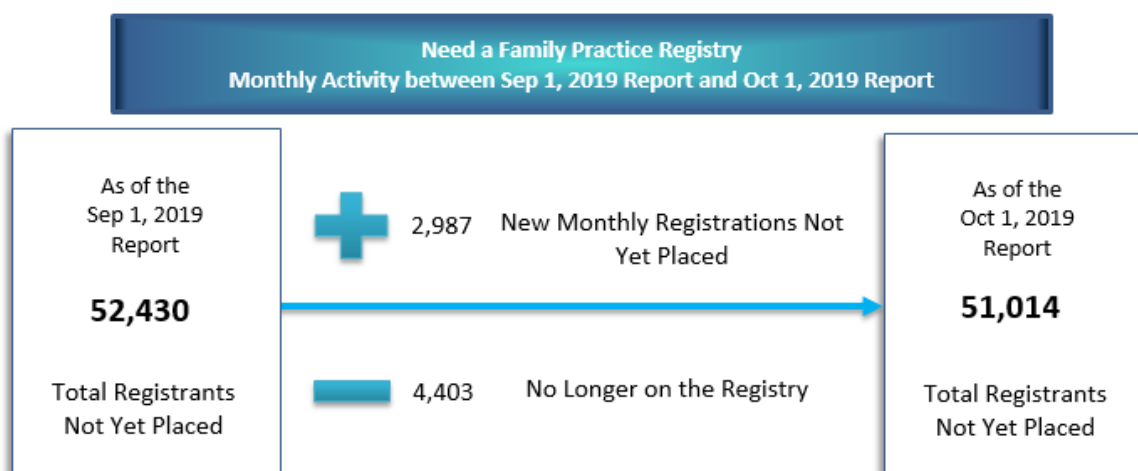
		Sep 1, 2019	Oct 1, 2019	% Change	Oct 1, 2019	Oct 1, 2019
Central Zone	Bedford /Sackville, Dartmouth / Southeastern, Eastern Shore Musquodoboit, Halifax Peninsula / Chebucto, and West Hants	15,255	13,493	-11.6%	3.2%	58,782
Eastern Zone	Antigonish and Guysborough, Cape Breton County, and Inverness / Victoria / Richmond	4,098	4,318	5.4%	2.7%	20,619
Northern Zone	Colchester, Cumberland, and Pictou County	12,368	12,632	2.1%	8.6%	14,919
Western Zone	Annapolis and Kings, Queens and Lunenburg and Yarmouth / Shelburne / Digby	20,565	20,514	-0.2%	10.6%	20,882
Unknown Geography	Unknown Geography	144	57	-	-	234
NOVA SCOTIA	TOTAL ACROSS NOVA SCOTIA	52,430	51,014	-2.7%	5.5%	115,436

\*Not yet placed percent of the population relative to the geography’s population (i.e., zone)

## Monthly Registry Activity

Specific to the NAFP registry during the month of September, 2,987 new registrations occurred (people who need a family practice) and 4,403 registrants were removed from the registry. People are removed from the registry because they were assisted with finding a family practice or for other reasons, such as already having found a provider when contacted by NSHA or having a duplicate registration. Figure 5 highlights the overall activity in the NAFP registry during the month of September 2019.

**Figure 5: Monthly NAFP Registry Activity**



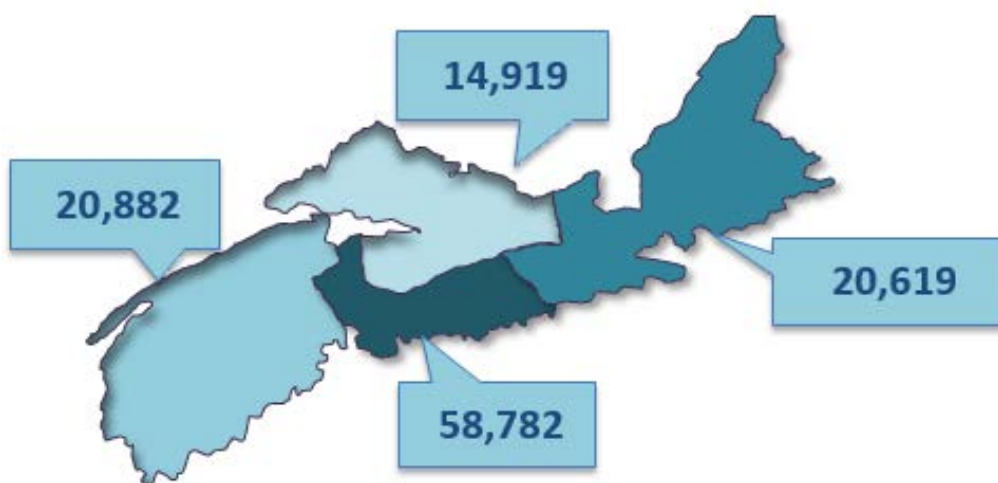
The registry is dynamic, with registrants being added and removed each day. Figure 5 is a simplified graphic that compares two snapshots, one month apart. It depicts the change in the registry total, showing the

number of those who have newly registered in the past month, minus the number of people who were no longer on the registry, which is a total of the number of registrants who found a provider and those who have been removed from the registry for other reasons.

### 3 | TOTAL ZONAL VOLUMES: FOUND A PRIMARY CARE PROVIDER

As of the October 1 report, 115,436 Nova Scotians have found a primary care provider who were registered on the NAFP registry or identified through other routes as tracked by NSHA, since November 2016. Figure 6 depicts the breakdown of individuals, by zone, that have found a provider.

**Figure 6:** Total Zonal Volumes - Found a Primary Care Provider



\*Note: 234 have an unknown zone

Table 1 provides the geographic breakdown of the number of people by zone, network, and cluster that found a primary care provider as reported through the NAFP registry or other routes tracked by NSHA, since November 2016.

**Table 1:** Total Zone, Network, and Cluster Volumes - Found a Primary Care Provider – October 1, 2019 Report

Total Zone, Network, and Cluster Volumes - Found a Primary Care Provider – October 1, 2019 Report	
Zone/Network/Cluster	Total # Found a Provider
<b>Central</b>	<b>58,782</b>
<b>Bedford / Sackville</b>	<b>9,422</b>
Bedford / Hammonds Plains	4,304
Fall River / Waverley	1,156
Sackville North and Area	2,086
Sackville South	1,876
<b>Dartmouth / Southeastern</b>	<b>17,484</b>
Cole Harbour / Eastern Passage	4,816
Dartmouth East	4,935
Dartmouth North	2,898

<b>Total Zone, Network, and Cluster Volumes - Found a Primary Care Provider – October 1, 2019 Report</b>	
<b>Zone/Network/Cluster</b>	<b>Total # Found a Provider</b>
Dartmouth South	3,713
Preston / Lawrencetown / Lake Echo	1,122
<b>Eastern Shore Musquodoboit</b>	<b>2,560</b>
Eastern Shore Musquodoboit	2,560
<b>Halifax Peninsula / Chebucto</b>	<b>22,415</b>
Armdale / Spryfield / Herring Cove	3,302
Clayton Park	4,794
Fairview	2,395
Halifax Chebucto	2,512
Halifax Citadel	2,577
Halifax Needham	2,847
Sambro Loop Area	1,156
Tantallon / Timberlea / St.Margaret's Bay	2,832
<b>West Hants</b>	<b>6,901</b>
West Hants	6,901
<b>Eastern</b>	<b>20,619</b>
<b>Antigonish and Guysborough</b>	<b>891</b>
Antigonish	737
Guysborough / Canso	108
Sherbrooke	46
<b>Cape Breton County</b>	<b>14,393</b>
Dominion / Glace Bay	2,561
Florence / Sydney Mines / North Sydney	2,581
New Waterford	1,802
Sydney and Area	7,449
<b>Inverness / Victoria / Richmond</b>	<b>5,335</b>
Baddeck / Whycomomagh	2,553
Cheticamp	584
Dingwall	41
Inverness	326
Port Hawkesbury / L'Ardoise / Isle Madame	1,831
<b>Northern</b>	<b>14,919</b>
<b>Colchester East Hants</b>	<b>8,133</b>
East Hants Corridor	484
Economy / Glenholme	161
Hants North	559
South Colchester	398
Truro and Area	6,531
<b>Cumberland</b>	<b>2,454</b>
Amherst	591
Cumberland North / North Shore	745
South Cumberland	255
Springhill	863

<b>Total Zone, Network, and Cluster Volumes - Found a Primary Care Provider – October 1, 2019 Report</b>	
<b>Zone/Network/Cluster</b>	<b>Total # Found a Provider</b>
<b>Pictou County</b>	<b>4,332</b>
New Glasgow / Westville / Stellarton	2,652
Pictou West	1,680
<b>Western</b>	<b>20,882</b>
<b>Annapolis and Kings</b>	<b>8,969</b>
Annapolis Royal	306
Berwick	1,203
Kentville	3,572
Middleton	2,563
Wolfville	1,325
<b>Queens and Lunenburg</b>	<b>6,619</b>
Bridgewater	2,468
Chester and Area	1,677
Liverpool	1,658
Lunenburg / Mahone Bay	816
<b>Yarmouth / Shelburne / Digby</b>	<b>5,294</b>
Digby / Clare / Weymouth	1,741
Shelburne / Lockeport	1,338
Yarmouth	2,215
<b>Unknown</b>	<b>234</b>
<b>Total Found a Provider</b>	<b>115,436</b>



## 4 | TOTAL ZONAL VOLUMES – NOT YET PLACED

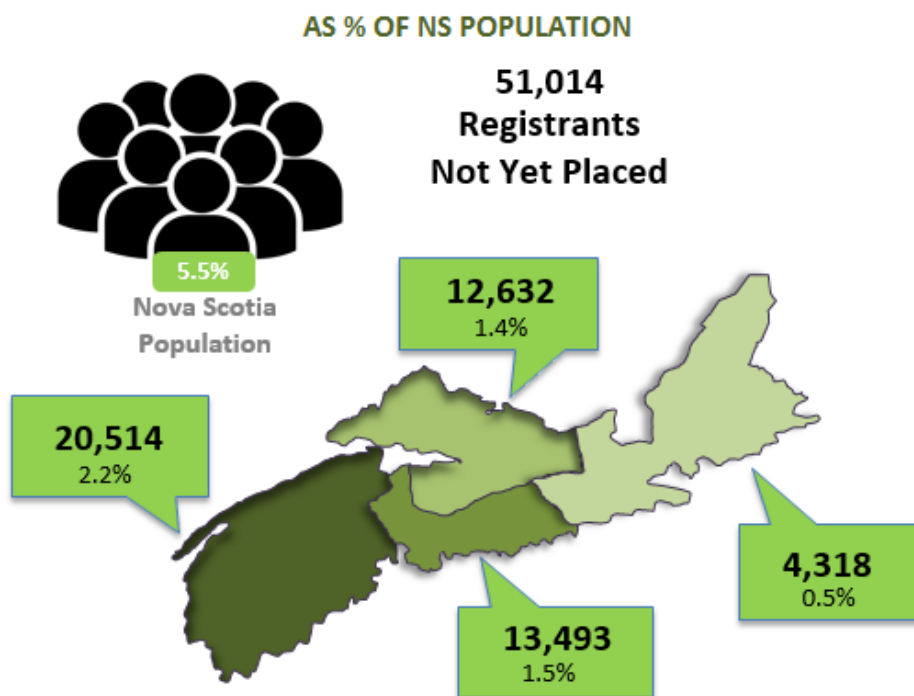
There are 51,014 registrants not yet placed with a family practice as of the October 1 report. The total volumes by zone\* are:

- Central Zone: 13,493 registrations
- Eastern Zone: 4,318 registrations
- Northern Zone: 12,632 registrations
- Western Zone: 20,514 registrations

\*Note: 57 have an unknown zone

Figure 7 gives a high-level overview of the volume of NAFP registrants who are not yet placed, by zone, as a percent of the total Nova Scotia population based on 2016 census counts.

**Figure 7: Total Zonal Volumes - Not Yet Placed as a Percent of the Total Nova Scotia Population**



\*Note: 57 have an unknown zone

Table 2 gives a detailed geographical breakdown of the volume of registrants not yet placed by zone, network, and cluster and as a percent of the corresponding Nova Scotia population by zone, network, and cluster.

**Table 2: Total Volumes Not Yet Placed by Zone, Network, and Cluster and as Percent of Population by Zone, Network, and Cluster**

Total Zone, Network, and Cluster Volumes – Not Yet Placed – October 1, 2019 Report			
Zone/Network/Cluster	Total # Not Yet Placed	Population by Zone, Network, Cluster (2016)	% of Population by Zone, Network, Cluster (2016)
Central	13,493	423,498	3.2%
Bedford / Sackville	2,439	99,581	2.4%

Total Zone, Network, and Cluster Volumes – Not Yet Placed – October 1, 2019 Report			
Zone/Network/Cluster	Total # Not Yet Placed	Population by Zone, Network, Cluster (2016)	% of Population by Zone, Network, Cluster (2016)
Bedford / Hammonds Plains	1,273	40,679	3.1%
Fall River and Area	266	15,424	1.7%
Sackville North and Area	511	22,325	2.3%
Sackville South	389	21,153	1.8%
<b>Dartmouth / Southeastern</b>	<b>3,427</b>	<b>116,491</b>	<b>2.9%</b>
Cole Harbour / Eastern Passage	395	35,355	1.1%
Dartmouth East	746	23,264	3.2%
Dartmouth North	941	19,833	4.7%
Dartmouth South	1,067	27,284	3.9%
Preston / Lawrencetown / Lake Echo	278	10,755	2.6%
<b>Eastern Shore Musquodoboit</b>	<b>396</b>	<b>17,474</b>	<b>2.3%</b>
Eastern Shore Musquodoboit	396	17,474	2.3%
<b>Halifax Peninsula / Chebucto</b>	<b>6,664</b>	<b>169,768</b>	<b>3.9%</b>
Armdale / Spryfield / Herring Cove	789	25,640	3.1%
Clayton Park	2,063	34,194	6.0%
Fairview	694	17,104	4.1%
Halifax Chebucto	626	18,939	3.3%
Halifax Citadel	1,063	22,106	4.8%
Halifax Needham	855	19,426	4.4%
Sambro Loop Area	323	12,660	2.6%
Tantallon / Timberlea / St. Margaret's Bay	251	19,699	1.3%
<b>West Hants</b>	<b>567</b>	<b>20,184</b>	<b>2.8%</b>
West Hants	567	20,184	2.8%
<b>Eastern</b>	<b>4,318</b>	<b>158,936</b>	<b>2.7%</b>
<b>Antigonish and Guysborough</b>	<b>370</b>	<b>26,926</b>	<b>1.4%</b>
Antigonish	327	19,301	1.7%
Guysborough / Canso	37	5,039	0.7%
Sherbrooke	6	2,586	0.2%
<b>Cape Breton County</b>	<b>3,553</b>	<b>99,590</b>	<b>3.6%</b>
Dominion / Glace Bay	739	20,713	3.6%
Florence / Sydney Mines / North Sydney	573	19,679	2.9%
New Waterford	570	9,454	6.0%
Sydney and Area	1,671	49,744	3.4%
<b>Inverness / Victoria / Richmond</b>	<b>395</b>	<b>32,420</b>	<b>1.2%</b>
Baddeck / Whycocomagh	13	3,654	0.4%
Cheticamp	1	3,903	0.0%
Dingwall	1	2,567	0.0%
Inverness	20	6,932	0.3%

Total Zone, Network, and Cluster Volumes – Not Yet Placed – October 1, 2019 Report			
Zone/Network/Cluster	Total # Not Yet Placed	Population by Zone, Network, Cluster (2016)	% of Population by Zone, Network, Cluster (2016)
Port Hawkesbury / L'Ardoise / Isle Madame	360	15,364	2.3%
<b>Northern</b>	<b>12,632</b>	<b>147,500</b>	<b>8.6%</b>
<b>Colchester East Hants</b>	<b>6,114</b>	<b>70,658</b>	<b>8.7%</b>
East Hants Corridor	742	<b>12,674</b>	<b>5.9%</b>
Economy / Glenholme	327	5,277	6.2%
Hants North	488	6,945	7.0%
South Colchester	332	10,792	3.1%
Truro and Area	4,225	34,971	12.1%
<b>Cumberland</b>	<b>2,418</b>	<b>33,094</b>	<b>7.3%</b>
Amherst	1,425	13,143	10.8%
Cumberland North / North Shore	630	8,665	7.3%
South Cumberland	183	3,864	4.7%
Springhill	180	7,422	2.4%
<b>Pictou County</b>	<b>4,100</b>	<b>43,748</b>	<b>9.4%</b>
New Glasgow / Westville / Stellarton	3,351	33,561	10.0%
Pictou West	749	10,187	7.4%
<b>Western</b>	<b>20,514</b>	<b>193,664</b>	<b>10.6%</b>
<b>Annapolis and Kings</b>	<b>9,515</b>	<b>78,793</b>	<b>12.1%</b>
Annapolis Royal	970	6,056	16.0%
Berwick	2,020	13,764	14.7%
Kentville	1,627	23,893	6.8%
Middleton	4,379	20,910	20.9%
Wolfville	519	14,170	3.7%
<b>Queens and Lunenburg</b>	<b>5,251</b>	<b>57,933</b>	<b>9.1%</b>
Bridgewater	2,511	26,711	9.4%
Chester and Area	825	11,778	7.0%
Liverpool	916	10,351	8.8%
Lunenburg / Mahone Bay	999	9,093	11.0%
<b>Yarmouth / Shelburne / Digby</b>	<b>5,748</b>	<b>56,938</b>	<b>10.1%</b>
Digby / Clare / Weymouth	2,335	18,553	12.6%
Shelburne / Lockeport	1,028	13,966	7.4%
Yarmouth	2,385	24,419	9.8%
<b>Unknown</b>	<b>57</b>	<b>-</b>	<b>0.0%</b>
<b>Total # Not Yet Placed</b>	<b>51,014</b>	<b>923,598</b>	<b>5.5%</b>