

# FINDING A PRIMARY CARE PROVIDER IN NOVA SCOTIA

March 2019 Report

Prepared for: Public



Reporting Cycle: Monthly

# INTRODUCTION

## Background

Nova Scotia Health Authority’s Need a Family Practice (NAFP) registry was launched on November 1, 2016. The registry provides a coordinated and consistent provincial approach for tracking Nova Scotians who self identify as not having access to a primary care provider (family physician or nurse practitioner).

People can register themselves and their family members on the NAFP registry online or by telephone to be contacted by a participating practice/provider that is accepting new patients. There are two main ways that contribute to how we report the number of people who have found a primary care provider in Nova Scotia: (1) Through names that are on the NAFP Registry and; (2) names that are not on the NAFP Registry and are sent to NSHA through other routes.

 <b>1. NSHA’s Need a Family Practice Registry</b>	 <b>2. Other Routes</b>
People can register themselves and their family members on the Need a Family Practice (NAFP) Registry online or by telephone to be contacted by a participating practice/provider that is accepting new patients.	People can find a primary care provider in other ways, such as with local family practices, through a family member who is an existing patient of a practice, or through a referral by another provider. Information on the number of patients accepted by family doctors who received the patient attachment incentive since April 2018 is also included in the ‘Other Routes’ category.

The term ‘**Found a Provider**’ is used throughout the report to depict the approximate number of people in Nova Scotia who have found a primary care provider and were registered on the NAFP registry and through other routes as tracked by NSHA since November 2016. The term '**Not Yet Placed**' is used to depict the number of NAFP registrants who are seeking a primary care provider and have added their names to the NAFP registry.

The report highlights the overall volume of people who have found a provider and who are not yet placed by geography (zone, network, and cluster), as well as by month, with data as of **February 25, 2019**.

## Report Format

This report is divided into the following sections:

1. Total Provincial Volumes
2. Monthly Activity
3. Total Zonal Volumes – Found a Provider
4. Total Zonal Volumes – Not Yet Placed

# 1 | TOTAL PROVINCIAL VOLUMES



## Total Provincial Volumes – Found a Primary Care Provider

- Over the month of February, 6,422 people found a primary care provider.
- The overall number of people in Nova Scotia who have found a primary care provider (NAFP registry and other routes) as tracked by NSHA since November 2016 is 75,645.



## Total Provincial Volumes – Not Yet Placed

- As of the March 1, 2019 report, there were 51,119 registrants not yet placed with a family practice, which accounts for 5.6% of the total population in Nova Scotia (based on 2011 census data).
- This represents a 1.4% decrease from the February 1, 2019 report where 51,845 registrants were not yet placed.

Figure 1 identifies the number of people in Nova Scotia who have found a primary care provider who were on the NAFP registry or identified through other routes as tracked by NSHA since November 2016.

**Figure 1: Total Provincial Volumes - Found a Primary Care Provider by Month**

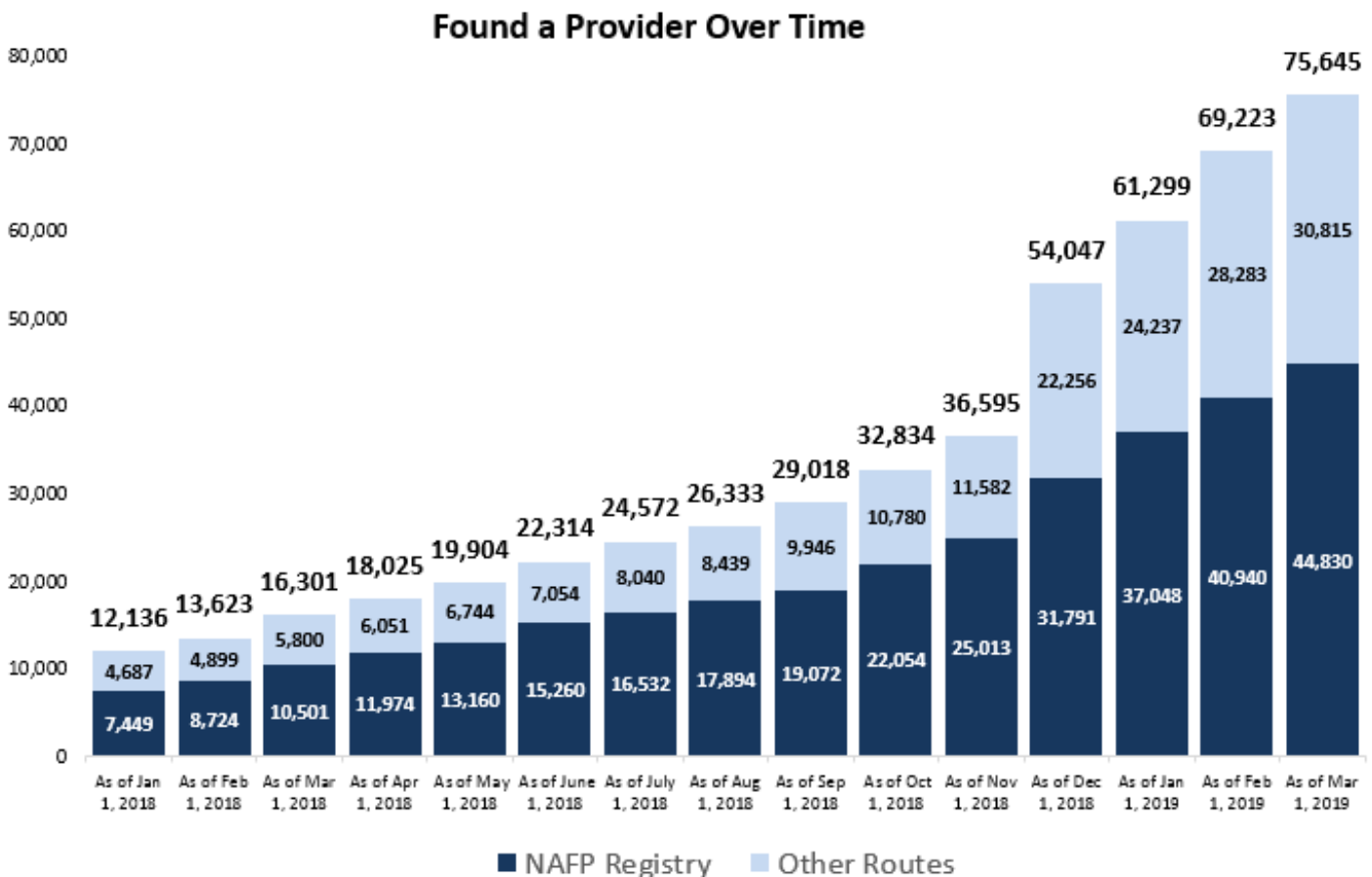
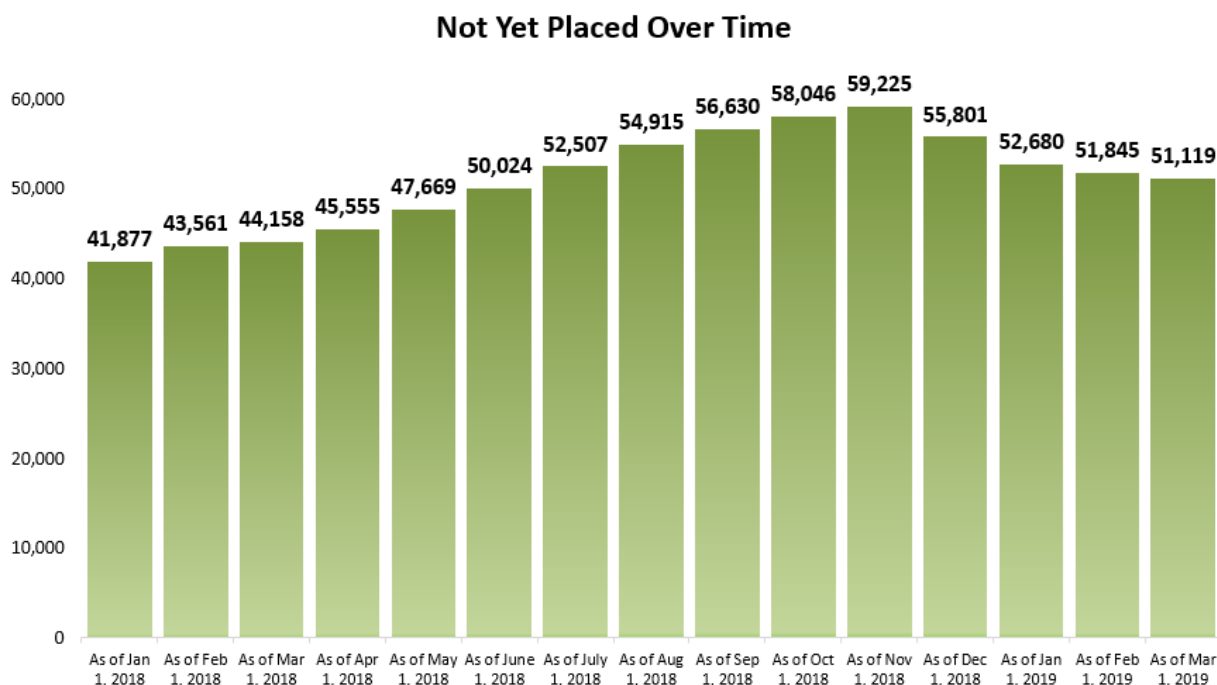


Figure 2 depicts the total number of registrants, by month, on the Need a Family Practice registry that are not yet placed with a family practice.

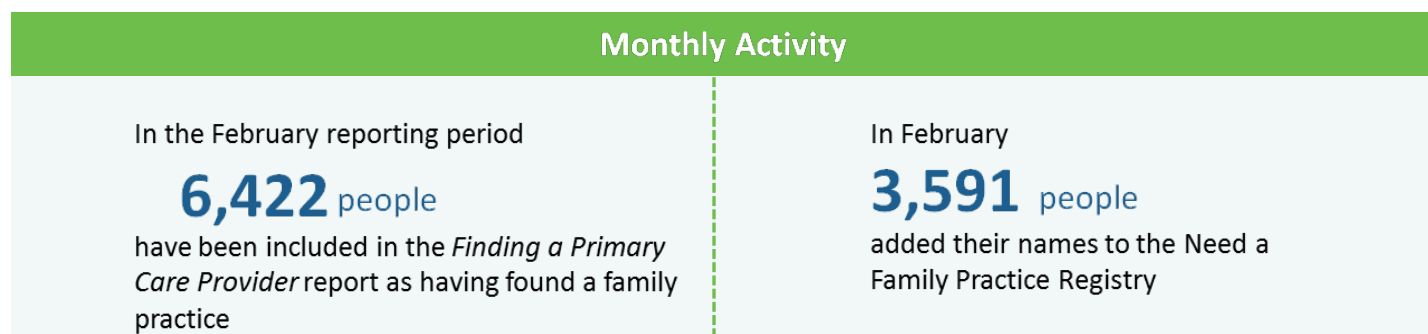
**Figure 2: Total Provincial Volumes - Not Yet Placed by Month**



## 2 | MONTHLY ACTIVITY

During the month of February, 6,422 people found a family doctor or nurse practitioner, and 3,591 people added their names to the Need a Family Practice registry as of March 1. Figure 3 highlights the overall monthly activity during the month of February 2019.


**Figure 3: Provincial Volumes - Monthly Activity**



### Monthly Activity by Zone

Figure 4 provides a summary of the monthly activity that occurred between the February 1 report and the March 1 report.

**Figure 4: Total Zonal Monthly Activity**



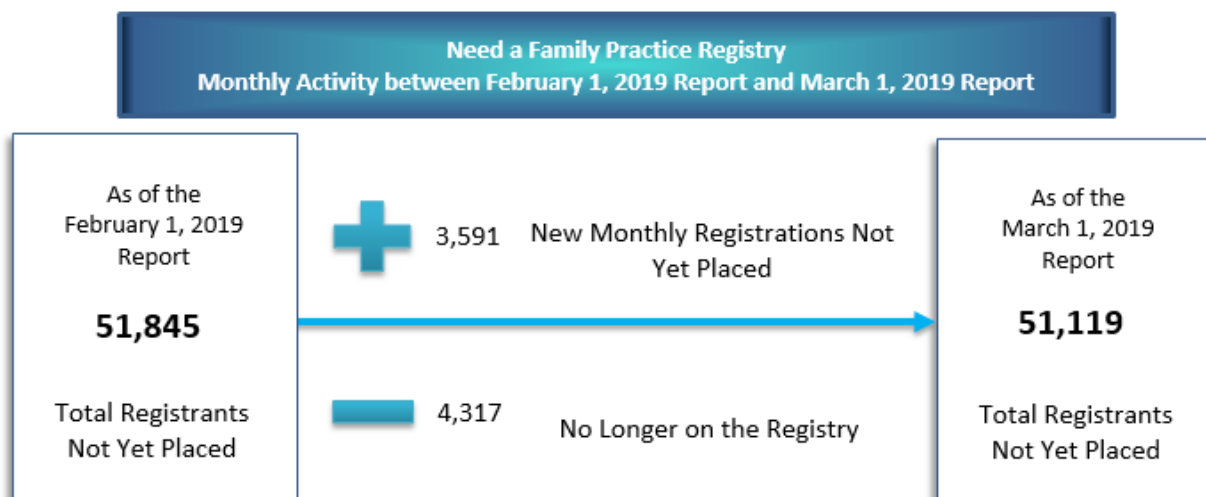
		Feb 1, 2019	Mar 1, 2019	% Change	Mar 1, 2019	Mar 1, 2019
<b>Central Zone</b>	Bedford /Sackville, Dartmouth / Southeastern, Eastern Shore Musquodoboit, Halifax Peninsula / Chebucto, and West Hants	22,245	20,593	-7.4%	5.0%	36,780
<b>Eastern Zone</b>	Antigonish and Guysborough, Cape Breton County, and Inverness / Victoria / Richmond	4,268	4,188	-1.9%	2.6%	14,356
<b>Northern Zone</b>	Colchester, Cumberland, and Pictou County	8,205	8,938	8.9%	5.9%	9,915
<b>Western Zone</b>	Annapolis and Kings, Queens and Lunenburg and Yarmouth / Shelburne / Digby	17,127	17,376	1.5%	8.9%	14,473
<b>Unknown Geography</b>	Unknown Geography	-	24	-	-	121
<b>NOVA SCOTIA</b>	<b>TOTAL ACROSS NOVA SCOTIA</b>	<b>51,845</b>	<b>51,119</b>	<b>-1.4%</b>	<b>5.6%</b>	<b>75,645</b>

\*Not yet placed percent of the population relative to the geography's population (i.e., zone)

## Monthly Registry Activity

Specific to the NAFP registry during the month of February, 3,591 new registrations occurred (people who need a family practice) and 4,317 registrants were removed from the registry. People are removed from the registry because they were assisted with finding a family practice or for other reasons, such as already having found a provider when contacted by NSHA or having a duplicate registration. Figure 5 highlights the overall activity in the NAFP registry during the month of February 2019.

**Figure 5: Monthly NAFP Registry Activity**



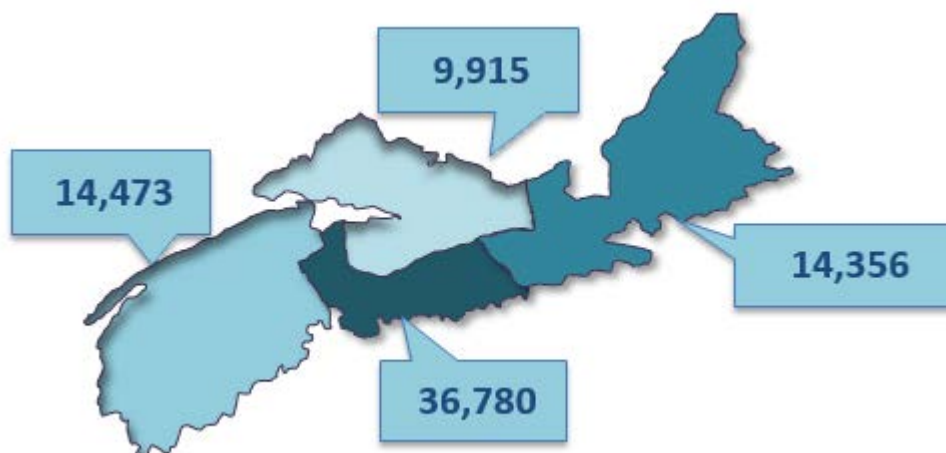
The registry is dynamic, with registrants being added and removed each day. Figure 5 is a simplified graphic that compares two snapshots, one month apart. It depicts the change in the registry total, showing the number of those who have newly registered in the past month, minus the number of people who were no

longer on the registry, which is a total of the number of registrants who found a provider and those who have been removed from the registry for other reasons.

### 3 | TOTAL ZONAL VOLUMES: FOUND A PRIMARY CARE PROVIDER

As of March 1, 75,645 Nova Scotians have found a primary care provider who were registered on the NAFP registry or identified through other routes as tracked by NSHA, since November 2016. Figure 6 depicts the breakdown of individuals, by zone, that have found a provider.

**Figure 6:** Total Zonal Volumes - Found a Primary Care Provider



\*Note: 121 have an unknown zone

Table 1 provides the geographic breakdown of the number of people by zone, network, and cluster that found a primary care provider as reported through the NAFP registry or other routes tracked by NSHA, since November 2016.

**Table 1:** Total Zone, Network, and Cluster Volumes - Found a Primary Care Provider – March 1, 2019 Report

Total Zone, Network, and Cluster Volumes - Found a Primary Care Provider – March 1, 2019 Report	
Zone/Network/Cluster	Total # Found a Provider
<b>Central</b>	<b>36,780</b>
<b>Bedford / Sackville</b>	<b>5,155</b>
Bedford / Hammonds Plains	2,329
Fall River / Waverley	645
Sackville North / Beaverbank / Mount Uniacke	1,110
Sackville South	1,071
<b>Dartmouth / Southeastern</b>	<b>11,047</b>
Cole Harbour / Eastern Passage	2,538
Dartmouth East	3,424
Dartmouth North	2,022
Dartmouth South	2,261
Preston / Lawrencetown / Lake Echo	802

<b>Total Zone, Network, and Cluster Volumes - Found a Primary Care Provider – March 1, 2019 Report</b>	
<b>Zone/Network/Cluster</b>	<b>Total # Found a Provider</b>
<b>Eastern Shore Musquodoboit</b>	<b>1,984</b>
Eastern Shore Musquodoboit	1,984
<b>Halifax Peninsula / Chebucto</b>	<b>12,842</b>
Armdale / Spryfield / Herring Cove	1,866
Clayton Park	2,542
Fairview	1,428
Halifax Chebucto	1,376
Halifax Citadel	1,381
Halifax Needham	1,683
Sambro Loop Area	724
Tantallon / Timberlea / St.Margaret's Bay	1,842
<b>West Hants</b>	<b>5,752</b>
West Hants	5,752
<b>Eastern</b>	<b>14,356</b>
<b>Antigonish and Guysborough</b>	<b>513</b>
Antigonish	396
Guysborough / Canso	88
Sherbrooke	29
<b>Cape Breton County</b>	<b>11,246</b>
Dominion / Glace Bay	1,947
Florence / Sydney Mines / North Sydney	2,097
New Waterford	1,454
Sydney	5,748
<b>Inverness / Victoria / Richmond</b>	<b>2,597</b>
Baddeck / Whycomomagh	706
Cheticamp	566
Dingwall	23
Inverness	236
Port Hawkesbury / Isle Madame / L'Ardoise	1,066
<b>Northern</b>	<b>9,915</b>
<b>Colchester East Hants</b>	<b>5,653</b>
East Hants Corridor	225
Economy / Glenholme	66
Hants North	365
South Colchester	229
Truro and Area	4,768
<b>Cumberland</b>	<b>1,582</b>
Amherst	242
North Cumberland / North Shore	654
South Cumberland	172
Springhill	514
<b>Pictou County</b>	<b>2,680</b>
New Glasgow / Westville / Stellarton	2,073

<b>Total Zone, Network, and Cluster Volumes - Found a Primary Care Provider – March 1, 2019 Report</b>	
<b>Zone/Network/Cluster</b>	<b>Total # Found a Provider</b>
Pictou West	607
<b>Western</b>	<b>14,473</b>
<b>Annapolis and Kings</b>	<b>6,081</b>
Annapolis Royal	143
Berwick	525
Kentville	2,664
Middleton	1,853
Wolfville	896
<b>Queens and Lunenburg</b>	<b>4,586</b>
Bridgewater	1,449
Chester	1,233
Liverpool	1,398
Lunenburg / Mahone Bay	506
<b>Yarmouth / Shelburne /Digby</b>	<b>3,806</b>
Digby / Clare / Weymouth	1,178
Shelburne / Lockeport	1,017
Yarmouth	1,611
<b>Unknown</b>	<b>121</b>
<b>Total Found a Provider</b>	<b>75,645</b>



## 4 | TOTAL ZONAL VOLUMES – NOT YET PLACED

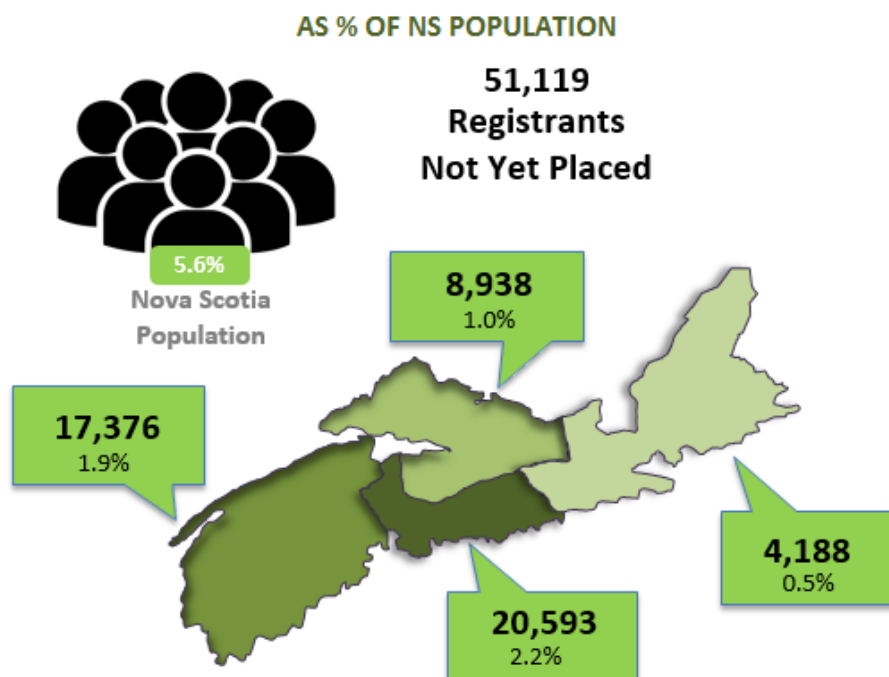
There are 51,119 registrants not yet placed with a family practice as of the March 1 report. The total volumes by zone\* are:

- Central Zone: 20,593 registrations
- Eastern Zone: 4,188 registrations
- Northern Zone: 8,938 registrations
- Western Zone: 17,376 registrations

\*Note: 24 have an unknown zone

Figure 7 gives a high-level overview of the volume of NAFP registrants who are not yet placed, by zone, as a percent of the total Nova Scotia population based on 2011 census counts.

**Figure 7: Total Zonal Volumes - Not Yet Placed as a Percent of the Total Nova Scotia Population**



\*Note: 24 have an unknown zone

Table 2 gives a detailed geographical breakdown of the volume of registrants not yet placed by zone, network, and cluster and as a percent of the corresponding Nova Scotia population by zone, network, and cluster.

**Table 2: Total Volumes Not Yet Placed by Zone, Network, and Cluster and as Percent of Population by Zone, Network, and Cluster**

Total Zone, Network, and Cluster Volumes – Not Yet Placed – March 1, 2019 Report			
Zone/Network/Cluster	Total # Not Yet Placed	Population by Zone, Network, Cluster (2011)	% of Population by Zone, Network, Cluster (2011)
Central	20,593	409,706	5.0%
Bedford / Sackville	3,858	87,838	4.4%
Bedford / Hammonds Plains	1,726	30,109	5.7%

Total Zone, Network, and Cluster Volumes – Not Yet Placed – March 1, 2019 Report			
Zone/Network/Cluster	Total # Not Yet Placed	Population by Zone, Network, Cluster (2011)	% of Population by Zone, Network, Cluster (2011)
Fall River / Waverley	422	13,994	3.0%
Sackville North / Beaverbank / Mount Uniacke	942	22,356	4.2%
Sackville South	768	21,379	3.6%
<b>Dartmouth / Southeastern</b>	<b>6,042</b>	<b>115,427</b>	<b>5.2%</b>
Cole Harbour / Eastern Passage	1,841	36,902	5.0%
Dartmouth East	1,062	23,616	4.5%
Dartmouth North	1,204	19,238	6.3%
Dartmouth South	1,582	24,719	6.4%
Preston / Lawrencetown / Lake Echo	353	10,952	3.2%
<b>Eastern Shore Musquodoboit</b>	<b>551</b>	<b>18,165</b>	<b>3.0%</b>
Eastern Shore Musquodoboit	551	18,165	3.0%
<b>Halifax Peninsula / Chebucto</b>	<b>9,585</b>	<b>167,379</b>	<b>5.7%</b>
Armdale / Spryfield / Herring Cove	1,251	23,502	5.3%
Clayton Park	2,873	34,439	8.3%
Fairview	1,029	15,789	6.5%
Halifax Chebucto	1,185	18,764	6.3%
Halifax Citadel	1,415	20,055	7.1%
Halifax Needham	1,112	20,192	5.5%
Sambro Loop Area	332	13,408	2.5%
Tantallon / Timberlea / St.Margaret's Bay	388	21,230	1.8%
<b>West Hants</b>	<b>557</b>	<b>20,897</b>	<b>2.7%</b>
West Hants	557	20,897	2.7%
<b>Eastern</b>	<b>4,188</b>	<b>163,450</b>	<b>2.6%</b>
<b>Antigonish and Guysborough</b>	<b>325</b>	<b>27,548</b>	<b>1.2%</b>
Antigonish	304	19,583	1.6%
Guysborough / Canso	14	5,122	0.3%
Sherbrooke	7	2,843	0.2%
<b>Cape Breton County</b>	<b>3,245</b>	<b>102,397</b>	<b>3.2%</b>
Dominion / Glace Bay	879	21,782	4.0%
Florence / Sydney Mines / North Sydney	717	19,870	3.6%
New Waterford	614	9,757	6.3%
Sydney	1,035	50,988	2.0%
<b>Inverness / Victoria / Richmond</b>	<b>618</b>	<b>33,505</b>	<b>1.8%</b>
Baddeck / Whycomomagh	97	5,382	1.8%
Cheticamp	<5	4,688	0.1%
Inverness	24	4,667	0.5%

Total Zone, Network, and Cluster Volumes – Not Yet Placed – March 1, 2019 Report			
Zone/Network/Cluster	Total # Not Yet Placed	Population by Zone, Network, Cluster (2011)	% of Population by Zone, Network, Cluster (2011)
Port Hawkesbury / Isle Madame / L'Ardoise	489	16,035	3.0%
Dingwall	5	2,733	0.2%
<b>Northern</b>	<b>8,938</b>	<b>150,409</b>	<b>5.9%</b>
<b>Colchester East Hants</b>	<b>4,733</b>	<b>69,991</b>	<b>6.8%</b>
East Hants Corridor	666	12,860	5.2%
Economy / Glenholme	176	5,078	3.5%
Hants North	277	6,613	4.2%
South Colchester	272	10,001	2.7%
Truro and Area	3,342	35,439	9.4%
<b>Cumberland</b>	<b>1,060</b>	<b>34,750</b>	<b>3.1%</b>
Amherst	251	14,819	1.7%
North Cumberland / North Shore	579	8,395	6.9%
South Cumberland	65	4,311	1.5%
Springhill	165	7,225	2.3%
<b>Pictou County</b>	<b>3,145</b>	<b>45,668</b>	<b>6.9%</b>
New Glasgow / Westville / Stellarton	2,465	34,916	7.1%
Pictou West	680	10,752	6.3%
<b>Western</b>	<b>17,376</b>	<b>196,284</b>	<b>8.9%</b>
<b>Annapolis and Kings</b>	<b>8,642</b>	<b>78,507</b>	<b>11.0%</b>
Annapolis Royal	765	6,026	12.7%
Berwick	2,271	13,161	17.3%
Kentville	1,510	24,944	6.1%
Middleton	3,636	21,022	17.3%
Wolfville	460	13,354	3.4%
<b>Queens and Lunenburg</b>	<b>5,268</b>	<b>59,384</b>	<b>8.9%</b>
Bridgewater	2,662	28,417	9.4%
Chester	788	12,271	6.4%
Liverpool	958	10,908	8.8%
Lunenburg / Mahone Bay	860	7,788	11.0%
<b>Yarmouth / Shelburne / Digby</b>	<b>3,466</b>	<b>58,393</b>	<b>5.9%</b>
Digby / Clare / Weymouth	2,194	18,899	11.6%
Shelburne / Lockeport	399	14,506	2.8%
Yarmouth	873	24,988	3.5%
<b>Unknown</b>	<b>24</b>	<b>-</b>	<b>0.0%</b>
<b>Total # Not Yet Placed</b>	<b>51,119</b>	<b>919,849</b>	<b>5.6%</b>